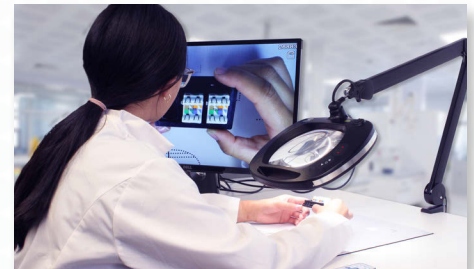




2 Methods to Inspect View objects on a monitor or magnifying lens	No PC Required Connect to a Monitor via HDMI	Frosted Diffuser Diffuser on LEDs help evenly distribute light	Imaging Capabilities Save Images/Videos to a Micro SD Card
---	--	--	--



Inspect Through a Monitor & Magnifying Lens



Frosted Diffuser w/ Color Temperature Controls



Tilt the Camera to Adjust the Image On Screen to Your Desired Angle

Mighty Vue Inspector

5 Diopter ESD Safe Magnifying Lamp w/ Built-in Camera

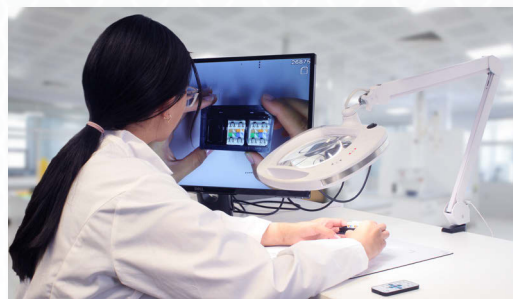
The Mighty Vue Inspector is a magnifying lamp and camera inspection system in one self-contained unit, allowing you to view the image directly on an HDMI monitor, capture and store images on the included microSD Card, and even connect to your PC for viewing or relocating saved images, and additional software features.

Key Features

- Connect to an HD monitor via HDMI cable
- Connect to a PC via USB (software not included)
- View/Save Images on a micro SD card
- Ideal for sharing images on a screen & finding defects in quality control
- ESD Safe - Dissipates electrostatic discharge
- Frosted diffuser on LED lights help evenly distribute light
- LED color temperature controls
- Convenient handle to easily reposition lamp
- Lamp provides up to a 36" (914 mm) reach
- Attractive design w/ a diamond pattern beveled finish & stainless-steel band

3 Diopter Model Also Available

Item # 26510-CAM



Mighty Vue Inspector	
5 Diopter ESD Safe	
Item #	26512-CAM
Magnification	5 Diopter (2.25x) Lens
Reach	Up to 36" (914 mm)
Illumination	30 High Intensity 6500K (Cool) LEDs 30 High Intensity 3500K (Warm) LEDs
Output	HDMI + USB