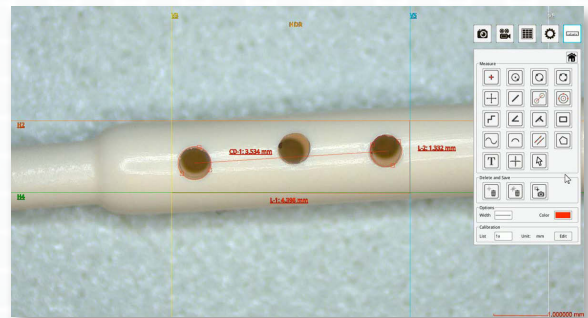




|   |  |   |   |
|---|--|---|---|
| <b>360 Viewer Attachment</b><br>Rotates to give a 35 degree angled view | <b>Enhances Productivity</b><br>Eliminates eye strain and body fatigue | <b>Built-in 11.6" Monitor</b><br>HDMI output for external monitor viewing | <b>USB Output</b><br>Save image/video files to USB storage device |
|---|--|---|---|



**360 Viewer**  
(View Objects at a 35 Degree Angle)



**Built-in Measurement Capabilities**  
(The 360 Viewer Attachment must be in the OFF position to use measurement functions)

# MicroVue

## Digital Microscope with Built-in HD Monitor and 360 Viewer

The MicroVue has all the features required for digital inspection. View live images, capture high resolution images/video files, make text annotations, take accurate measurements, and more without the need for an external PC. The included 360 Viewer Attachment provides a 35 degree angled view and can be rotated 360 degrees to view areas that are otherwise difficult to see.

### Key Features

- 360 Viewer Attachment rotates to give a 35 degree angled view
- Built-in 11.6" monitor for ergonomic viewing
- 17x - 110x Magnification on the built-in monitor (when 360 viewer is in the on position, the angled on-screen image is displayed at a reduced 0.5x magnification)
- 8.6x - 221x Magnification range with optional lenses (sold separately, not compatible with 360 viewer)
- HDMI output for external monitor viewing
- Built-in measurement capabilities - No PC required
- Save image/video files to USB storage device
- Compact design saves bench top space

| <b>MicroVue</b><br>Digital Microscope with Built-In HD Monitor and 360 Viewer |  |
|---|--|
| <b>Item #</b>   | 26700-140-3D   |
| <b>Magnification</b>  | 17x - 110x (based on the built-in monitor)<br>33x - 210x (based on an external 22" monitor)  |
| <b>Working Distance</b>   | 100mm (Standard Lens with 360 Viewer Off)  |
| <b>Resolution</b>   | 1920 x 1080p Full HD at 60 FPS   |
| <b>Output</b>   | HDMI, USB Mouse, USB Storage   |
| <b>Measurement</b>  | Built-in Measurement Capabilities  |
| <b>Package Contents</b>   | <ul style="list-style-type: none"> <li>• MicroVue Digital Microscope</li> <li>• MicroVue Track Stand Post (13")</li> <li>• MicroVue Track Stand Base (10.25" x 12.73")</li> <li>• DC-12V Power Adapter</li> <li>• Wireless USB Mouse (requires 2 AAA batteries)</li> <li>*batteries not included</li> <li>• USB Flash Drive</li> <li>• Tools for Assembly</li> <li>• Assembly Guide</li> <li>• 360 Viewer Attachment</li> <li>• User Manual</li> </ul> |