

**Soft & Even  
Illumination**  
Reduces glare  
on shiny &  
reflective objects

**No Tools  
Required**  
Easily attaches to  
the bottom of the  
Mighty Scope v2

# Diffuser Attachment

## For Mighty Scope v2

Designed to be used when observing shiny or reflective objects. This diffuser easily attaches to the bottom of the Mighty Scope v2 to help spread the bright LED light evenly over the objects below the microscope.



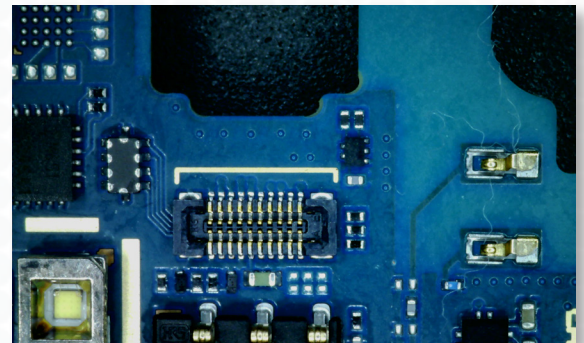
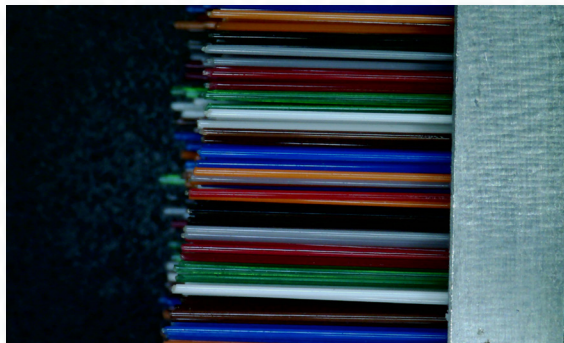
### Key Features

- Provides soft & even illumination for your Mighty Scope v2
- Reduces glare on shiny and reflective objects
- The diffuser easily attaches to the Mighty Scope v2 with no tools required

### Easy Attachment

Simply remove the clear cap from the Mighty Scope v2 and slide the Diffuser into place.

### With Diffuser



### Without Diffuser

