



Tools for
Advancing
Innovation

ezImage Software Included	8x-25x Magnification	5" High Resolution LED Screen	Micro SD Card Slot
Measure, Share and Annotate	Adjustable LEDs & Focus Wheel	1080P Full HD	Process, Save & Share Images



Mighty Scope ClearVue

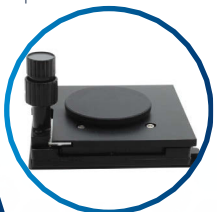
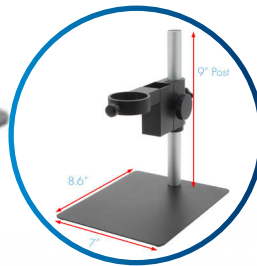
All-In-One Digital Microscope

On Post Stand w/ Gliding Stage XYR

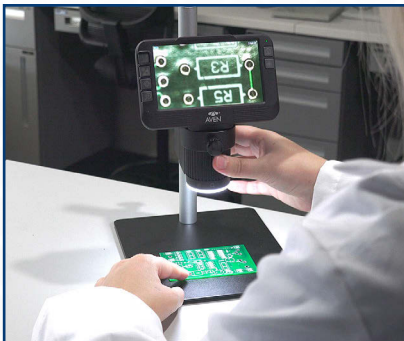
Mighty Scope ClearVue has a built in 5" high resolution LED screen and offers a magnification range of 8x -25x. The included rechargeable battery allows you to operate the microscope without a power supply for hours thus making it suitable for field projects. You can also connect this microscope to an external monitor via an HDMI output for viewing images on a larger screen. Images can be saved on the included Micro SD card. Can also be mounted onto a variety of stands to suit your application. Includes the Mighty Scope ClearVue Gliding Stage, with horizontal and vertical movement, as well as a rotating base. Ideal for smooth scanning of objects.

Features:

- Compact All-in-one system
- 1080p Full HD Imaging at 60 FPS
- HDMI Output for additional monitor viewing
- ezImageX3 software download included
- 5" built-in HD screen
- Save high resolution image/video files directly to microSD card
- Enhances productivity - eliminates eye strain and body fatigue
- 1080p Full HD Output



Crystal Clear 5" Screen



EzImage X3 Download Included



Aven's Dual Gooseneck LED Task Light



Recommended for improved imaging & color control

Sold Separately #26537

Mighty Scope ClearVue w/ Gliding Stage

Item #	26700-220-479
Magnification	8x-25x 40x-120x (on 24" Monitor)
Effective Pixels	1920(H) x 1080(V)
Image Sensor	2M CMOS Sensor
Working Dist.	45mm-95mm
Interface	Mini USB - Type A / HDMI
PC Software	EZImage X3
Illumination	Integrated Ring Light
Package Contents	Mighty Scope ClearVue digital microscope, USB cable, Power supply, Snap shot remote control, 32gb MicroSD Card, 2600mAh 18650 Li-ion battery, User guide, ClearVue Post Stand, Gliding Stage, Free ezImageX3 software download

Mighty Scope ClearVue

	<p>Mighty Scope ClearVue on Spring Balanced Arm w/ Table Clamp #26700-220-559</p> <p>This arm can be raised, lowered, and tilted as needed. The swivel motion makes it easy to move the ClearVue out of the way when not in use.</p> <ul style="list-style-type: none"> • Fully Covered 31" Spring Balanced Arm • Adjustable Tension Knob
	<p>Mighty Scope ClearVue on Flex Arm Stand w/ Table Clamp #26700-220-557</p> <p>This arm easily bends and stays put in any position. Tilt, rotate, and position as needed</p> <ul style="list-style-type: none"> • 18" Steady Mobile Flex Arm • 360° Swivel Head • 2" Table Clamp
	<p>Mighty Scope ClearVue on Flex Arm Stand w/ Magnetic Base #26700-220-558</p> <p>This arm easily bends and stays put in any position. Tilt, rotate, and position as needed</p> <ul style="list-style-type: none"> • 18" Steady Mobile Flex Arm • 360° Swivel Head • 3" Magnetic Base
	<p>Mighty Scope ClearVue on Post Stand #26700-220-MNT</p> <ul style="list-style-type: none"> • 7"x8.5" Metal Base • Vertical adjustment along 10" Post
	<p>Compact Gliding Stage XYR #26800B-479</p> <ul style="list-style-type: none"> • Smooth vertical and horizontal movement w/ Built-in rotating stage • Compact design (5.3 x 4.7 x 3.6 inch base) • Metal rack and pinion construction • Designed to be used with optical and digital microscope systems
	<p>Dual Gooseneck LED Task Light With Magnetic Base And 4" Table Clamp #26537</p> <ul style="list-style-type: none"> • Smooth vertical and horizontal movement w/ Built-in rotating stage • Powerful, long lasting ultra-bright LEDs provide 500lm of flicker and ghost-free illumination • On/Off button toggles between the lamps for single-lamp or dual-lamp lighting • Can be powered 3 ways: with included power supply, 3 AA batteries, or with a rechargeable lithium ion battery