

**Soft & Even  
Illumination**

Eliminates glare  
& hot spots from  
shiny objects

**Easy to  
Install**

Attaches to the  
ClearVue with no  
tools required



# Diffuser Attachment

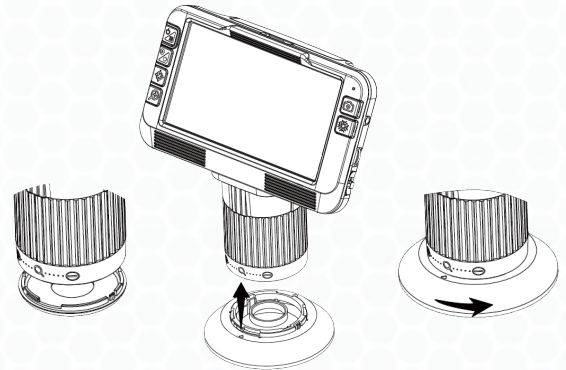
## For Mighty Scope ClearVue

Item # 26700-220-DIFF

Designed to be used with Aven's Mighty Scope ClearVue digital microscope. When in use, this attachment disperses the LED light from the Mighty Scope ClearVue for soft, even illumination!

### Key Features

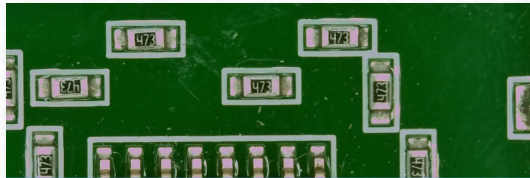
- Custom made attachment for the Mighty Scope ClearVue Digital Microscope
- Evenly disperses LED light from the Mighty Scope ClearVue for soft & even illumination
- Eliminates glares and hot spots caused by bright lights
- Ideal when examining shiny or reflective parts
- Easy to install and remove



### Easy Attachment

1. Remove the cap from the Mighty Scope ClearVue
2. Connect the diffuser attachment to the Mighty Scope ClearVue
3. Twist the diffuser attachment to the right to secure it

**With  
Diffuser**



**Without  
Diffuser**



**With  
Diffuser**



**Without  
Diffuser**



Diffuser Attachment For Mighty Scope ClearVue	
Item #	26700-220-DIFF
Compatibility	Mighty Scope ClearVue Digital Microscopes
Material	Plastic
Recommended Working Distance	2.5 in - 3.5 in (when in use) (6.35 cm - 8.89 cm)
Dimensions	4 in x 4.75 in x 1.25 in 10.16 cm x 12.07 cm x 3.18 cm
Weight	0.05 lb