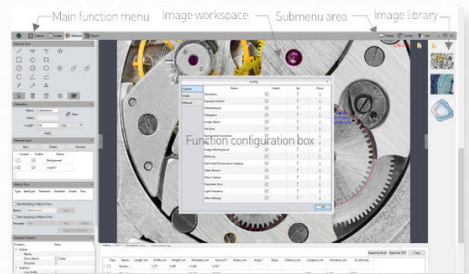




|   |                                |                         |  |
|---|--------------------------------|-------------------------|--|
| <b>Dual View</b>                          | <b>HDMI &amp; USB</b>          | <b>SD Card Included</b> | <b>Double Arm Boom Stand</b>               |
| Inspect through the monitor or eye-pieces | Connect to an HD monitor or PC | Save images/video files | Easily move across the object being viewed |



**HDMI Mode - Integrated Measurement Software**  
No PC Required



**USB Mode - Capture Software**  
Connect to a PC for more advanced features

# SPZV-50 Stereo Zoom Trinocular Microscope

## with Mighty Cam Pro on Double Arm Boom Stand

This high definition 1080P auto focus inspection system with a 22" monitor offers superb image quality at 60 frames per second. You can operate the system with or without a PC.

This innovative all-in-one inspection system gives operators two viewing options:

- **SPZV-50 Trinocular Microscope**  
- View objects beneath the microscope in crystal-clear 3D, with a magnification range of 6.7x - 50x
- **Mighty Cam Pro - HDMI Monitor or PC**  
- The Mighty Cam Pro inspection camera connects directly to your HD monitor via HDMI, or to your PC via USB  
- View real-time images at a magnification range of 34x - 255x

### Key Features

- Stereo Zoom Technology - Provides a crystal-clear 3D view of objects below the microscope
- Dual View- Examine objects on the HD monitor or through the microscope eye-pieces
- HDMI Mode - Save images, measure, and more without a PC
- SD Card Included - Save image and video files in HDMI mode
- PC Mode - Connect to a PC to utilize more advanced software features



**Vertical and Horizontal Adjustment**

| Stereo Zoom Trinocular Microscope  |  |
|--|--|
| <i>SPZV-50 [6.7x - 50x] with Mighty Cam Pro on Double Arm Boom Stand</i> |  |
| <b>Item #</b>  | 26800B-383-PRO   |
| <b>Magnification</b>   | <i>Microscope Magnification Range: 6.7x - 50x<br/>On-Screen Magnification Range: 34x - 255x</i>  |
| <b>Resolution</b>  | <i>Dynamic Resolution: 2MP 1920 x 1080P<br/>Static Resolution: 6MP 3264 x 1836P</i>  |
| <b>Illumination</b>  | Integrated LED Ring Light  |
| <b>Output Interface</b>  | <ul style="list-style-type: none"> <li>• USB</li> <li>• HDMI</li> <li>• SD Card</li> </ul>   |
| <b>Package Contents</b>  | <ul style="list-style-type: none"> <li>• Mighty Cam Pro (26100-258)</li> <li>• Stereo Zoom Microscope (SPZV-50)</li> <li>• Double Arm Boom Stand (26800B-534)</li> <li>• E-Arm LED Focus Mount with brightness control box (26200B-209)</li> <li>• 22" LCD HD Monitor (26700-406)</li> </ul> |