



# Heat Pump Installation & Maintenance Test Kit

**Test Equipment  
Depot**

5 Commonwealth Ave  
Woburn, MA 01801  
Phone 781-665-1400  
Toll Free 1-800-517-8431

Visit us at [www.TestEquipmentDepot.com](http://www.TestEquipmentDepot.com)



## UEi TOOL BACKPACK!



### UEi Tool Backpack

Install Kits are packed in this UEi Tool Backpack. Built rugged, waterproof base, two compartments with inner pocket options and includes D-clip.

## Heat Pump Applications

Confirms:

- Manufacturer requirements to maintain warranty
- CFM via external static pressure test
- System is free from refrigerant leaks
- Proper high voltage to power supply and ground
- Low voltage meets wiring diagram requirements
- Evacuation Suction & Liquid valves
- Temperatures of Suction & Liquid lines
- Superheat and Subcool values for adjustments

## Kit Includes

Static pressure Manometer Kit (EM201SPKIT)  
True RMS Clamp Meter (DL579)  
Refrigerant Leak Detector (RLD15B)  
Wireless Refrigeration Analyzer (HUB8)  
2 Wireless Hygrometers  
2 Wireless Pressure Probes  
2 Wireless Temp. Pipe Clamps  
1 Wireless Vacuum Gauge  
1 Wireless Outdoor Temp. Probe  
UEi Tool Backpack (AC550)

## A2L Notation

- RLD15B: A2L Certified SAE J2913
- HUB8: A2L Compatible



## DL579 600A True-RMS Dual Display HVAC/R Clamp Meter

- 750/1000V AC/DC, 600A AC/DC
- AC/DC Microamps
- Low Z (impedance)
- Resistance
- Continuity/Diode Test
- Frequency/Duty Cycle
- 1-Year limited warranty

Safety Rated: CATIV 300V / CATIII 600V  
Certified by ETL to IEC 61010-1, 3rd edition



## RLD15B Refrigerant Leak Detector

- A2L Certified
- Digital numeric leak size indicator
- 3 Sensitivity levels
- Visual LED leak alarm
- Auto calibration & ambient level reset
- Splash resistant
- Worklight
- 2-Year limited warranty

Certifications: SAE J2913 (A2L Certified), SAE J2791, EN14624-2012, ASHRAE 173-2012

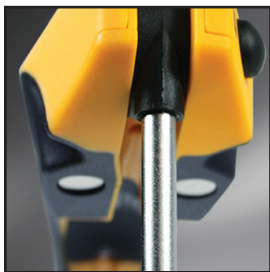
## HUB8 Smart Refrigeration Probes Deluxe Kit w/ Vacuum Gauge



## EM201SPKIT Static Pressure Manometer Kit

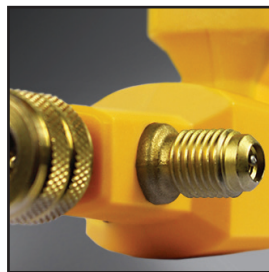
- ±60 Inches Water Column
- Differential Pressure
- High Resolution: 0.001 InWC -9.999 to +9.999 InWC
- Standard Resolution: 0.01 InWC for < -10 or > +10 InWC
- Dynamic Min/Max value capture
- 3-Year limited warranty

Wireless Hygrometer



Magnets secure Hygrometer to plenum and the position lock holds probe in optimum air stream path.

Wireless Pressure Probe



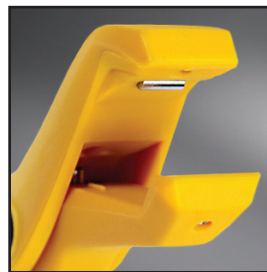
Pass thru port hook up, no hoses or adapters needed. 180° articulation allows access in tight spaces.

Wireless Vacuum Gauge Probe



Instant warm up and response time with an oil contamination and sensor failure detection.

Wireless Pipe Clamp



Narrow head for tight spaces with a thermally isolated sensor for greater accuracy.

Outdoor Temperature Probe



Magnetic hanger allows for temperature measurements in direct air stream.

## Free Intuitive App Features Vacuum, Refrigeration & Air Calculations



HUB8 probes require "UEi HUB" App  
Compatible mobile devices:  
Android™ 5+, iOS® 10+ or iPadOS™ 10+



511KIT