

SeeSnake[®]

micro**DRAIN** **APX**[™]

 **TruSense[®]**
Enabled



WARNING!

Read this Operator's Manual carefully before using this tool. Failure to understand and follow the contents of this manual may result in electrical shock, fire, and/or serious personal injury.

Table of Contents

Introduction

Regulatory Statements	3
Safety Symbols.....	3

General Safety Rules

Work Area Safety.....	4
Electrical Safety.....	4
Personal Safety	4
Equipment Use and Care	5
Pre-Operation Inspection.....	6

SeeSnake microDRAIN APX Overview

Description	7
Specifications	8
Components	9

Specific Safety Information

microDRAIN APX Safety	10
-----------------------------	----

Operating Instructions

Placement.....	11
Opening the microDRAIN APX Case.....	11
Installing the Drum.....	12
Inspection Overview	12
Pipe Guides.....	13
Removing the Slip Ring Assembly.....	13

Maintenance and Support

Cleaning	14
Maintaining Components.....	14
Service and Repair.....	14
Disposal.....	14

*Original Instructions – English

Introduction

The warnings, cautions, and instructions discussed in this manual cannot cover all possible conditions and situations which may occur. It must be understood by the operator that common sense and caution are factors that cannot be built into this product, but must be supplied by the operator.

Regulatory Statements

CE The EC Declaration of Conformity (999-995-232.10) will accompany this manual as a separate document when required.

FCC This device complies with Part 15 of FCC rules. Operation is subject to the following two conditions: (1) This device may not cause harmful interference, and (2) this device must accept any interference received, including interference that may cause undesired operation.

**UK
CA** **UK Importer**
Ridge Tool UK (RIDGID)
44 Baker Street
London W1U 7AL, UK

Safety Symbols

In this manual and on the product, safety symbols and signal words are used to communicate important safety information. This section is provided to improve understanding of these signal words and symbols.



This is the safety alert symbol. It is used to alert you to potential personal injury hazards. Obey all safety messages that follow this symbol to avoid possible injury or death.

DANGER

DANGER indicates a hazardous situation which, if not avoided, will result in death or serious injury.

WARNING

WARNING indicates a hazardous situation which, if not avoided, could result in death or serious injury.

CAUTION

CAUTION indicates a hazardous situation which, if not avoided, could result in minor or moderate injury.

NOTICE

NOTICE indicates information that relates to the protection of property.



This symbol means read the manual carefully before using the equipment. The manual contains important information on the safe and proper operation of the equipment.



This symbol means always wear safety glasses with side shields or goggles when handling or using this equipment to reduce the risk of eye injury.



This symbol indicates the risk of electrical shock.

General Safety Rules

⚠ WARNING



Read all safety warnings and instructions. Failure to follow the warnings and instructions may result in electrical shock, fire, and/or serious injury.

SAVE THESE INSTRUCTIONS!

Work Area Safety

- **Keep your work area clean and well lit.** Cluttered or dark areas invite accidents.
- **Do not operate equipment in explosive atmospheres, such as in the presence of flammable liquids, gases, or dust.** Equipment can create sparks which may ignite the dust or fumes.
- **Keep children and bystanders away while operating equipment.** Distractions can cause you to lose control.
- **Avoid traffic.** Pay attention to moving vehicles when using on or near roadways. Wear high-visibility clothing or reflector vests.

Electrical Safety

- **Avoid body contact with earthed or grounded surfaces such as pipes, radiators, ranges, and refrigerators.** There is an increased risk of electrical shock if your body is earthed or grounded.
- **Do not expose equipment to rain or wet conditions.** Water entering equipment will increase the risk of electrical shock.
- **Keep all electrical connections dry and off the ground.** Touching equipment or plugs with wet hands can increase the risk of electrical shock.

- **Do not abuse the cord.** Never use the cord for carrying, pulling, or unplugging the power tool. Keep cord away from heat, extreme cold, oil, sharp edges, and moving parts. Damaged or entangled cords increase the risk of electrical shock.
- **If operating equipment in a damp location is unavoidable, use a ground fault circuit interrupter (GFCI) protected supply.** Use of a GFCI reduces the risk of electrical shock.

Personal Safety

- **Stay alert, watch what you are doing, and use common sense when operating equipment.** Do not use equipment while you are tired or under the influence of drugs, alcohol, or medication. A moment of inattention while operating equipment may result in serious injury.
- **Dress properly.** Do not wear loose clothing or jewelry. Loose clothes, jewelry, and long hair can be caught in moving parts.
- **Practice good hygiene.** Use hot, soapy water to wash hands and other body parts exposed to drain contents after handling or using drain inspection equipment. To prevent contamination from toxic or infectious material, do not eat or smoke while operating or handling drain inspection equipment.
- **Always use appropriate personal protective equipment when handling and using equipment in drains.** Drains may contain chemicals, bacteria, and other substances that may be toxic, infectious, and cause burns or other issues. Appropriate personal protective equipment always includes safety glasses and may include a dust mask, hard hat, hearing protection, drain cleaning gloves or mitts, latex or rubber gloves, face shields, goggles, protective clothing, respirators, and steel toed, non-skid footwear.
- **If using drain cleaning equipment and drain inspection equipment at the same time, wear RIDGID drain cleaning gloves.** Never grasp the rotating

drain cleaning cable with anything else, including other gloves or a rag which can become wrapped around the cable and cause hand injuries. Only wear latex or rubber gloves underneath RIDGID drain cleaner gloves. Do not use damaged drain cleaning gloves.

Equipment Use and Care

- **Do not force equipment.** Use the correct equipment for your application. The correct equipment does the job better and more safely.
- **Do not use equipment if the power switch does not turn it on and off.** Any equipment that cannot be controlled with the power switch is dangerous and must be repaired.
- **Disconnect the plug from the power source and/or the battery pack from the equipment before making adjustments, changing accessories, or storing.** Preventive safety measures reduce the risk of injury.
- **Store idle equipment out of the reach of children and do not allow persons unfamiliar with the equipment or these instructions to operate the equipment.** Equipment can be dangerous in the hands of untrained users.
- **Maintain equipment.** Check for misalignment or binding of moving parts, missing parts, breakage of parts, and any other condition that may affect the equipment's operation. If damaged, have the equipment repaired before use. Many accidents are caused by poorly maintained equipment.
- **Do not overreach.** Keep proper footing and balance at all times. This enables better control of the equipment in unexpected situations.
- **Use the equipment and accessories in accordance with these instructions, taking into account the working conditions and the work to be performed.** Use of the equipment for operations

different from those intended can result in hazardous situations.

- **Use only accessories that are recommended by the manufacturer for your equipment.** Accessories that may be suitable for one piece of equipment may become hazardous when used with other equipment.
- **Keep handles dry, clean, and free from oil and grease.** Clean handles give better control of the equipment.

Pre-Operation Inspection

WARNING



To reduce the risk of serious injury from electrical shock or other causes, and to prevent damage to your equipment, inspect all equipment and correct any problems before each use.

To inspect all equipment, follow these steps:

1. Power off your equipment.
2. Disconnect and inspect all cords, cables, and connectors for damage or modification.
3. Clean any dirt, oil, or other contamination from your equipment to ease inspection and to prevent it from slipping from your grip during transportation or use.
4. Inspect your equipment for any broken, worn, missing, misaligned, or binding parts, or any other condition which might prevent safe, normal operation.
5. Refer to the instructions for all other equipment to inspect and make sure it is in good, usable condition.
6. Check your work area for the following:
 - Adequate lighting
 - The presence of flammable liquids, vapors, or dust that may ignite. If present, do not work in area until sources have been identified and corrected. The equipment is not explosion proof. Electrical connections can cause sparks
 - A clear, level, stable, and dry place for the operator. Do not use the equipment while standing in water
7. Examine the job to be done and determine the correct equipment for the task.

8. Observe the work area and erect barriers as necessary to keep bystanders away.

See additional product specific safety information and warnings on page 10.

SeeSnake microDRAIN APX Overview



Description

The SeeSnake® microDRAIN APX™ is a portable and customizable diagnostic camera reel designed specifically for small pipes and conduits. It uses an advanced flexible push cable design and a proprietary small diameter camera, which allows camera inspection through very small diameter pipes, P-traps, and very small radius bends which conventional inspection systems often cannot inspect.

The microDRAIN APX features a built-in sonde in the camera head that can be located to find points of interest in the pipe.

Compatibility

To take advantage of all of the microDRAIN APX features, pair it with a SeeSnake TruSense capable monitor. Available TruSense capable monitors include the CS6x Versa, CS65xR, and CS12x monitors, as well as the CSx Via mobile inspection device.

The microDRAIN APX is backwards compatible with any SeeSnake monitor to record and distribute inspections.

The microDRAIN APX can also be used with the RIDGID micro CA-350 handheld inspection monitor using the CA-350 adapter accessory and docking handle, sold separately.

TruSense® Technology

TruSense technology establishes a two-way communication link between the camera head and a connected TruSense Enabled Monitor. Advanced on-camera sensors convey valuable information about the in-pipe environment.

Included TruSense Features

TiltSense™ — The TiltSense inclinometer measures the camera's degree of tilt and displays it on the monitor, giving you a useful indicator of the camera's angle as it lays inside the pipe.

HDR Image Sensor — The high dynamic range (HDR) image sensor expands the camera's dynamic range, allowing a greater ratio of bright and dark areas to be displayed in the same image at the same time without reducing visibility. The result is superior clarity and detail, allowing you to quickly and easily identify problem areas.

APX Features

Auto Image Flip — When connected to a SeeSnake TruSense Enabled Monitor, the microDRAIN APX flips your on-screen image as the camera rotates through the pipe, ensuring your image remains oriented upright. An on-screen icon indicates the vertical orientation with respect to the image.

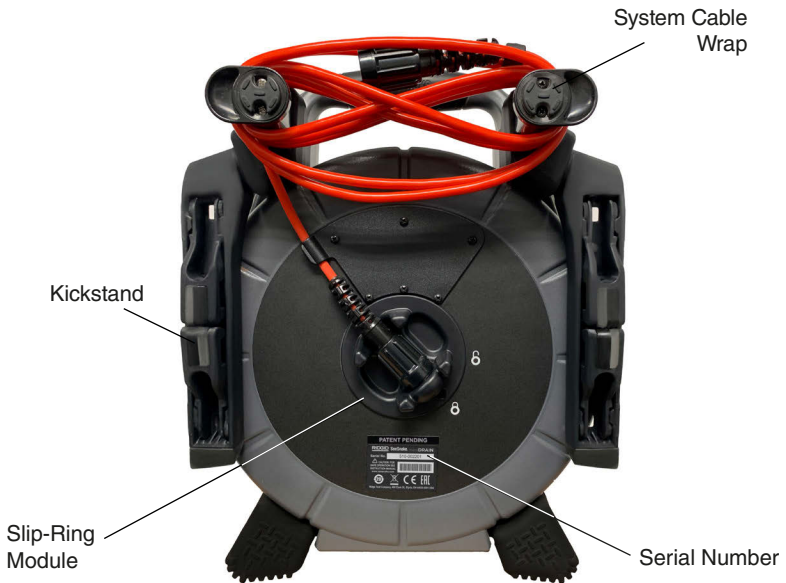
Specifications	
Weight	5.25 kg [11.6 lbs]
Dimensions	
Width	337 mm [13.3 in]
Depth	224 mm [8.8 in]
Height	411 mm [16.2 in]
Interior Drum Diameter	305 mm [12 in]
Camera	
Length	19 mm [0.8 in]* 25 mm [1 in]**
Diameter	22 mm [0.87 in]
Resolution	640 x 480 pixels
Sonde	
Type	Intergrated
Frequency	512 Hz
Distance Measurement	
Type	TruSense Counter
Data Communication	Two-Way
Push Cable	
Length	20 m [65 ft]
Diamer	8.3 mm [0.33 in]

Specifications	
Mimimum bend radius	19.1 mm [0.75 in]
Pipe Capacity §	32 mm to 76 mm [1.25 in to 3 in]
System Cable Length	3 m [10 ft]
Operating Environment	
Temperature †	0°C to 46°C [32°F to 115°F]
Storage temperature	-20°C to 70°C [-4°F to 158°F]
Relative humidity	5% to 95%
Altitude	4,000 m [13,123 ft]
Camera depth rating	Waterproof to 100 m [328.1 ft]
* Measured from lens to spring.	
** Measured from lens to end of threads.	
§ Actual pipe capacity depends on pipe conditions.	
‡ While the camera can function in extreme temperatures, some image quality changes may occur.	

Standard Equipment

- SeeSnake microDRAIN APX
- Ball guides
- Operator's manual
- Spanner wrench

Components



Specific Safety Information

⚠ WARNING



This section contains important safety information that is specific to the RIDGID SeeSnake microDRAIN. Read these precautions carefully before using the equipment to reduce the risk of electrical shock, fire, and/or serious injury.

SAVE ALL WARNINGS AND INSTRUCTIONS FOR FUTURE REFERENCE!

microDRAIN APX Safety

- **An improperly grounded electrical outlet can cause electrical shock and or severely damage equipment.** Always check work area for a properly grounded electrical outlet. Presence of a three prong or GFCI outlet does not insure that the outlet is properly grounded. If in doubt, have the outlet inspected by a licensed electrician.
- **Do not operate this equipment if operator or machine is standing in water.** Operating machine while in water increases the risk of electrical shock.
- **The microDrain System camera and pushrod are waterproof. The monitor and other electrical equipment and connections are not.** Do not expose the equipment to water or rain. This increases the risk of electrical shock.
- **Do not use where a danger of high voltage contact is present.** The equipment is not designed to provide high voltage protection and isolation.

- **Read and understand this operator's manual, the monitor operators' manual, and the instructions for any other equipment in use before operating the microDrain System.** Failure to follow all instruction may result in property damage and/or serious personal injury.
- **Always use appropriate personal protective equipment while handling and using equipment in drains.** Drains may contain chemicals, bacteria and other substances that may be toxic, infectious, cause burns or other issues. Appropriate personal protective equipment always includes safety glasses, and may include equipment such as drain cleaning gloves or mitts, latex or rubber gloves, face shields, goggles, protective clothing, respirators and steel toed footwear.
- **If using drain cleaning equipment at the same time as using drain inspection equipment, only wear RIDGID Drain Cleaning Gloves.** Never grasp the rotating drain cleaning cable with anything else, including other gloves or a rag. They can become wrapped around the cable, causing hand injuries. Only wear latex or rubber gloves under RIDGID Drain Cleaner Gloves. Do not use damaged drain cleaning gloves.
- **Practice good hygiene.** Use hot, soapy water to wash hands and other exposed body parts exposed to drain contents after handling or using drain inspection equipment. Do not eat or smoke while operating or handling drain inspection equipment. This will help prevent contamination with toxic or infectious material.

Operating Instructions

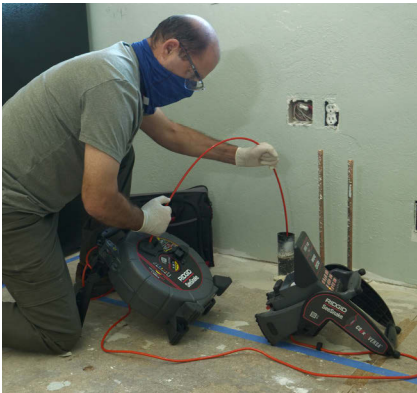
Placement

Set up your microDRAIN APX near the pipe entrance so you can manipulate the push cable while viewing the display. Use the kickstand to position the microDRAIN APX so that it does not tip during use.

NOTICE

Use of the microDRAIN APX camera in porcelain appliances will cause scratching to the surface finish of the appliances. To avoid scratching a toilet, for example, use a curved non marking pipe segment to lead the camera past the porcelain bowl and into the drain.

To avoid scratching a toilet, for example, use a curved non marking pipe segment to lead the camera past the porcelain bowl and into the drain.



Opening the microDRAIN APX Case

WARNING

Make sure the camera is completely inside the drum before unlatching and opening the microDRAIN APX case. Do not open the microDRAIN APX case while the camera is stored in the camera clip. If the camera is not in the drum, the push cable can unwind and cause damage or serious injury.

Open the microDRAIN APX case to route the camera, replace the drum, rewind the push cable, and to maintain and clean the system.

1. Set the unit on a level surface and lay it on its back.
2. Unfasten the case latches on either side of the microDRAIN APX.



Case Latch

3. Carefully open the front case and locate the camera head in the push cable drum.
4. Route the camera head out through the push cable guide in the front of the case.
5. Secure the camera head in the clip.
6. Close and relatch the case.



Installing the Drum

The microDRAIN APX case gives you the ability to swap out the drum when the job requires a different push cable and camera combination. Either microDRAIN drum can be installed in the microDRAIN APX case, as well as the drums on the SeeSnake microREEL™ and NANoreel™ systems.

To install the drum, follow these steps:

1. Open the microDRAIN APX case and remove the drum.
2. Place the drum you want to use in the microDRAIN APX case.
3. Make sure the product name label faces up.
4. Spin the drum to make sure it rotates freely.
5. Close and lock the case.

Inspection Overview

To perform a pipe inspection, connect any SeeSnake monitor to the reel, power on the system, push the push cable through the pipe, and observe the display.

For advanced inspection options, such as capturing media, locating the sonde, tracing the push cable, and delivering reports, refer to the manual that comes with your monitor.

Connecting to the Monitor

Connect the system cable to the monitor by aligning the connector guide pin with the socket and pushing the connector straight in.

NOTICE

Only twist the outer locking sleeve. Never bend or twist the connector.



Connecting to the CSx Via

The CSx Via Wi-Fi inspection device can be connected to the microDRAIN APX through the slip-ring cavity. Remove the slip-ring assembly from the microDRAIN APX and install the CSx Via into the slip-ring cavity.

For more instructions on installing the CSx Via, refer to the operator's manual.

Retrieving the Camera

Pull the push cable back out of the pipe with slow, steady force and feed small lengths back into the drum. Wipe the push cable with a paper towel or rag as you retrieve it.

NOTICE Do not exert excessive force or pull at sharp angles. Feeding longer lengths or forcing the push cable may cause it to loop, kink, or break.

Pipe Guides

Pipe guides center the camera in the pipe, improve picture quality, and help keep the lens clear. Use pipe guides when possible to reduce wear and tear on the camera system.

Removing the Slip Ring Assembly

1. Disconnect the system cable from the reporting monitor and remove the monitor from the docking system.
2. Unwrap the system cable from the cable wraps.
3. Pop the frame cable anchor off the frame and unhook the system cable from the frame hook.
4. Turn the slip-ring dial counter-clockwise to the unlocked position **6**.
5. Pull straight out.

NOTICE Do not touch the contact pins inside the slip-ring dial. Stressing the contact pins can cause them to break.



Maintenance and Support

Cleaning

Clean your system with rags and a soft nylon brush. If desired, a mild detergent or disinfectant can be used. Do not use solvents or high pressure water to clean any part of the system.

Maintaining Components

Camera Head

Scratches on the camera have a minimal effect on its performance. Do not use scraping tools or sand the camera to remove scratches.

Push Cable

Run a rag over the push cable and visually inspect it for cuts and abrasions while pushing it back into the drum. Replace or repair the push cable if the outer jacket is cut or abraded.

Storage

The microDRAIN APX must be stored in a dry, secure area between -20°C and 70°C [-4°F and 158°F]. Store your equipment in a locked area out of the reach of children and people unfamiliar with its purpose.

Support

For support and additional information about using your system, visit **support**.

Service and Repair

Improper service or repair can cause the camera reel to be unsafe to operate.

Service and repair of the camera reel must be performed at a RIDGID Independent Authorized Service Center. To find your nearest service center or for any service or repair questions:

- Contact your local RIDGID distributor.
- Contact Ridge Tool Company Technical Service Department at rttechservices@emerson.com or, in the USA and Canada, call 1-800-519-3456.

Disposal

Parts of your system contain valuable materials that can be recycled. There are companies that specialize in recycling that may be found locally. Dispose of the components in compliance with all applicable regulations. Contact your local waste management authority for more information.



EC Countries: Do not dispose of electrical equipment with household waste!

According to the European Guideline 2012/19/EU for Waste Electrical and Electronic Equipment and its implementation into national legislation, electrical equipment that is no longer usable must be collected separately and disposed of in an environmentally correct manner.

Battery Disposal

EC Countries: Defective or used batteries must be recycled according to the guideline 2006/66/EEC.

© 2023 Ridge Tool Company. All rights reserved.

Every effort has been made to ensure that the information in this manual is accurate. Ridge Tool Company and its affiliates reserve the right to change the specifications of the hardware, software, or both as described in this manual without notice. Visit www.RIDGID.com for current updates and supplemental information pertaining to this product. Due to product development, the photos and other presentations specified in this manual may differ from the actual product.

RIDGID and the RIDGID logo are trademarks of Ridge Tool Company, registered in the USA and other countries. All other registered and unregistered trademarks and logos mentioned herein are the property of their respective owners. Mention of third-party products is for informational purposes only and constitutes neither an endorsement nor a recommendation.

Test Equipment Depot - 800.517.8431 - TestEquipmentDepot.com

Printed in USA
999-995-433.10

2023/2/13
744-034-0208-00-0A