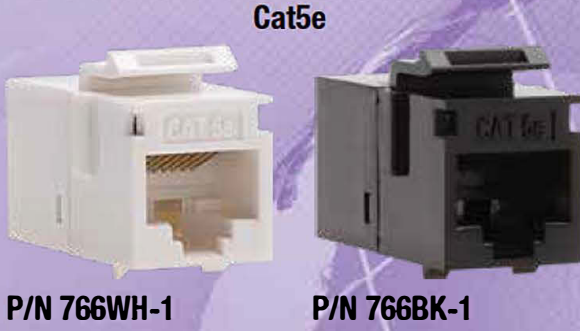


Keystone Couplers

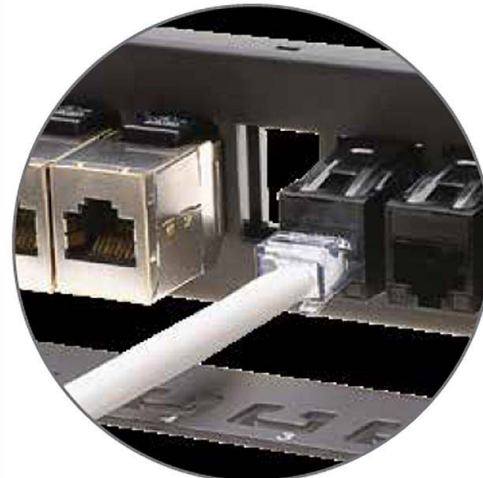
PLATINUM TOOLS



Stop Punching - Platinum's new Keystone Couplers terminate in half the time of standard keystones

How often are loose connections in punchdown keystones the cause of install delays or service call-backs? Eliminate this potential trouble spot with our new Keystone Couplers. Simply terminate the cable with the Platinum RJ45 connector of your choice, plug it into the back of the Keystone Coupler, then snap the Coupler into a wall plate or surface mount box. For even more customization, combine with our unloaded patch panels for fast wiring and total flexibility.

- Terminates in 1/2 the time of punchdown keystones.
- No compromise in data throughput speeds
- Fast, easy, F to F connection using RJ45 connectors.
- Standard keystone size works with most wall plates, surface-mount boxes, and unloaded patch panels.



Combine with our unloaded patch panels for flexible & fast cable management

Part Number	Product	Qty
766WH-1	Cat5e Keystone Coupler, F to F, White UTP	1/Bag
766BK-1	Cat5e Keystone Coupler, F to F, Black UTP	1/Bag
768WH-1	Cat6 Keystone Coupler, F to F, White UTP	1/Bag
768BK-1	Cat6 Keystone Coupler, F to F, Black UTP	1/Bag
769-1	Cat6 Shielded Keystone Coupler, F to F	1/Bag
770WH-1	Cat6A Keystone Coupler, F to F, White UTP	1/Bag
770BK-1	Cat6A Keystone Coupler, F to F, Black UTP	1/Bag
771-1	Cat6A Shielded Keystone Coupler, F to F	1/Bag

We Make Connections EZ!