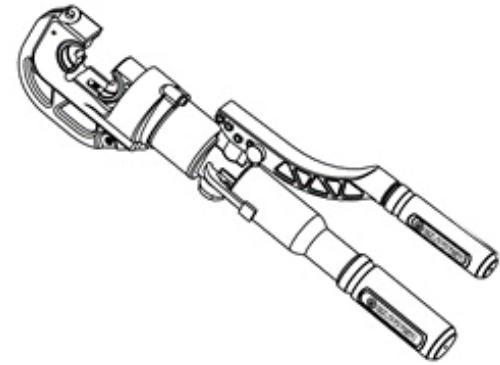


Instruction Manual

Hydraulic Crimping Tool – 902-480



Due to continuing improvements, actual product may differ slightly from the product described herein.



Read this material before using this product.

Failure to do so can result in serious injury.

SAVE THIS MANUAL

LIMITED 1 YEAR WARRANTY

We make every effort to assure that its products meet high quality and durability standards, and warrants to the original purchaser that this product is free from defects in materials and workmanship for the period of one year from the date of purchase (90 days if used as rental equipment). This warranty does not apply to damage due directly or indirectly, to misuse, abuse, negligence or accidents, repairs or alterations outside our facilities, normal wear and tear, or to lack of maintenance. We shall in no event be liable for death, injuries to persons or property, or for incidental, contingent, special or consequential damages arising from the use of our product. Some states do not allow the exclusion or limitation of incidental or consequential damages, so the above limitation of exclusion may not apply to you. THIS WARRANTY IS EXPRESSLY IN LIEU OF ALL OTHER WARRANTIES, EXPRESS OR IMPLIED, INCLUDING THE WARRANTIES OF MERCHANTABILITY AND FITNESS.

To take advantage of this warranty, the product or part must be returned to us with transportation charges prepaid. Proof of purchase date and an explanation of the complaint must accompany the merchandise. If our inspection verifies the defect, we will either repair or replace the product at our election or we may elect to refund the purchase price if we cannot readily and quickly provide you with a replacement. We will return repaired products at our expense, but if we determine there is no defect, or that the defect resulted from causes not within the scope of our warranty, then you must bear the cost of returning the product.

The warranty gives you specific legal rights and you may also have other rights which vary from state to state.

SAVE THIS MANUAL

Keep this manual for the safety warnings and precautions, assembly, operating,

inspection, maintenance and cleaning procedures. Write the month and year of purchase. Keep this manual and the receipt in a safe and dry place for future reference.

IMPORTANT SAFETY INFORMATION

In this manual, on the labeling, and all other information provided with this product:



This is the safety alert symbol. It is used to alert you to potential personal injury hazards. Obey all safety messages that follow this symbol to avoid possible injury or death.



DANGER indicates a hazardous situation which, if not avoided, will result in death or serious injury.



WARNING indicates a hazardous situation which, if not avoided, could result in death or serious injury.



CAUTION, used with the safety alert symbol, indicates a hazardous situation which, if not avoided, could result in minor or moderate injury.

GENERAL SAFETY RULES

TO WORK IN SAFE CONDITIONS WITH THIS TOOL, IT IS IMPERATIVE TO READ CAREFULLY THE DIRECTIONS FOR USE AND TO FOLLOW THE INSTRUCTION IT CONTAINS. IF YOU DO NOT RESPECT THE INFORMATION WRITTEN IN THE INSTRUCTION MANUAL, THE WARRANTY WILL BE CANCELLED.

1. Work area safety

- a. Keep work area clean and well lit. Cluttered or dark areas invite accidents.
- b. Keep children and bystanders away while operating the hydraulic cable cutter. Distractions can cause you to lose control.
- c. Do not leave the tool in acidity, alkaline or other corrosive gas or liquid and do not operate or stock the tool in high temperature to avoid the tool corrosion or the seal gasket aging.

2. Personal safety

- d. Stay alert, watch what you are doing and use common sense when operating the tool. Do not use the tool while you are tired or under the influence of drugs, alcohol or medication.. A moment of inattention while operating hydraulic tools may result in serious personal injury.
- e. Use safety equipment. Always wear eye protection. Safety equipment such as dust mask, non-skid shoes, hard hat, or hearing protection used for appropriate conditions will reduced personal injuries.
- f. Dress properly. Do not wear loose clothing or jewelry. Keep your hair, clothing and gloves away from moving parts. Loose clothes jewelry or long hair can be caught in moving parts.
- g. Do not force the tool. Use the correct power tool for your application. The correct power tool will do the job better and safer at the rate for which it was designed.

- h. Store idle power tools out of the reach of children and do not allow persons unfamiliar with the hydraulic crimping tool. This tool is dangerous in the hands of untrained users.
- i. Maintain power tools. Check for misalignment or binding of moving parts, breakage of parts and any other condition that may affect the Hydraulic crimping tool operation. If damaged, have the Hydraulic crimping tool repaired before use. Many accidents are caused by poorly maintained power tools.
- j. Use the Hydraulic Crimping Tool accessories and tool bits etc., in accordance with these instructions and in the manner intended for the particular type of tool, taking into account the working conditions and the work to be performed. Use of the Hydraulic Crimping Tool for operations different from those intended could result in a hazardous situation.

3. Service

Have your Hydraulic Crimping Tool serviced by a qualified service technician using only identical replacement parts. This will ensure that the safety of the Hydraulic Crimping Tool Kit is maintained.

SPECIFIC SAFETY RULES

1. Maintain labels and nameplates on the tool, These carry important safety information. If unreadable or missing, contact the agent to replace.
2. This product is not a toy, keep it out of reach of children.
3. Do not slide your fingers in the crimping die profile.
4. Do not put your fingers in the head of the tool when you slide the crimping die inside it. Your fingers could be pinched very severely.
5. Do not use the tool without crimping die
6. Do not crimp on live cables or conductors
7. During crimping process, make sure the lock latch completely closed for locking the crimping head.

8. Do not adjust the pressure freely, if there is less/no pressure, please deliver the tool to distributor/ manufacturer for inspection and repair.
9. The warnings, precautions, and instructions discussed in this instruction manual cannot cover all possible conditions and situations that may occur. It must be understood by the operator that common sense and caution are factors which cannot be built into this product, but must be supplied by the operator.



SAVE THESE INSTRUCTIONS

UNDERSTAND YOUR TOOL

902-480 is the tool for cutting hard metal wire and rod. It owns many advantages such as good design, easy operation, high pressure, high efficiency and etc. It is a perfect tool to be used in electric construction site and other outdoor site.

1. Specification

Item No.:	902-480		
Crimping force:	12 Ton		
Crimping range:	AWG6 to 750MCM		
Stroke:	1.65 inch		
Length:	21.25 inches		
Net weight	14 lbs		
Capacity of oil:	160ml (15# hydraulic oil)		
Ambient temperature:	-20□ ~ 40□		
Package:	Steel case		

PLEASE READ THE FOLLOWING CAREFULLY

THE MANUFACTURER AND/OR DISTRIBUTOR HAS PROVIDED THE PARTS LIST AND ASSEMBLY DIAGRAM IN THIS MANUAL AS A REFERENCE TOOL ONLY. NEITHER THE MANUFACTURER NOR DISTRIBUTOR MAKES ANY REPRESENTATION OR WARRANTY OF ANY KIND TO THE BUYER THAT HE OR SHE IS QUALIFIED TO MAKE ANY REPAIRS TO THE PRODUCT, OR THAT HE OR SHE IS QUALIFIED TO REPLACE ANY PARTS OF THE PRODUCT. IN FACT, THE MANUFACTURER AND/OR DISTRIBUTOR EXPRESSLY STATES THAT ALL REPAIRS AND PARTS REPLACEMENTS SHOULD BE UNDERTAKEN BY CERTIFIED AND LICENSED TECHNICIANS, AND NOT BY THE BUYER. THE BUYER ASSUMES ALL RISK AND LIABILITY ARISING OUT OF HIS OR HER REPAIRS TO THE ORIGINAL PRODUCT OR REPLACEMENT PARTS THERETO, OR ARISING OUT OF HIS OR HER INSTALLATION OF REPLACEMENT PARTS THERETO.

OPERATING INSTRUCTIONS.

Please check carefully before operating. Make sure the tool is complete and has no damaged parts.

⚠CAUTION Please do not knock any part of the tool, otherwise it is dangerous for operator.

1. Select the appropriate die set for the connector and cable being used. Ask an authorized facility or distributor to choose proper compression die set for the connector and cable being used.

⚠CAUTION Don't operate the tool without dies.

2. Pull the limit pin to insert the upper crimping die and press the retaining clip to insert the lower crimping die. The steel ball located center of the die will match the die holder when both die halves are in place.
3. Make sure both die halves are secured before operating the tool.
4. Place the connector between the dies, turn the screw 180° to open the pump handle. Pump the handle until the connector is held in place. In this process, spring loaded pump handle automatically opens by itself for one hand pumping operation.
5. Fully insert the cable into the barrel of the connector
6. Continue pumping the tool handle to crimp the connector completely. The internal relief valve will automatically activate when full pressure is reached. The handle pressure decreasing is indicated by a significant clicking sound.
7. Two stage pumping action with safety valve inside to control the crimping pressure.

⚠WARNING

The built-in safety valve is tested before shipment, the user can not adjust by himself, please send the tool to the professional trained person to adjust, then use the tool.

Dust or air inside the tool will damage the sealing kit and cause the tool malfunction. Make sure the oil is clear and no dust entering into oil when changing oil. Wait for a while and exhaust the oil completely out of the oil tube before inserting the oil plug.

⚠CAUTION

Please lock the handle to avoid air entering into hydraulic system when changing oil.

⚠WARNING

Please wear rubber gloves to avoid skin touching the oil directly, if it happens, please wash the skin with soap and water quickly. In order to protect the environment please drain the waste oil to the treatment center where was approved by government.

1. If the tool is not used for a long time, please make sure the piston stays in its original position, Clean up the tool and rub rustproof oil both on the tool and the die. Put them back into the box and store the tool in a dry surrounding.
2. The Sealing kit inside the tool will be abraded in some degree after use, when the oil leaks a lot, please contact the distributor to replace the Sealing kit immediately.

TROUBLESHOOTING

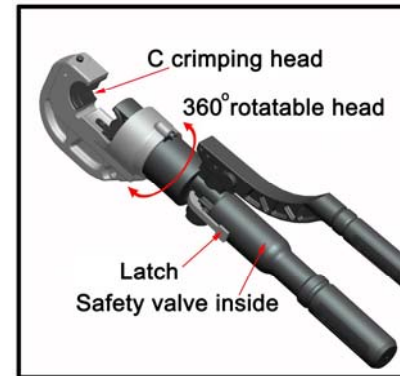
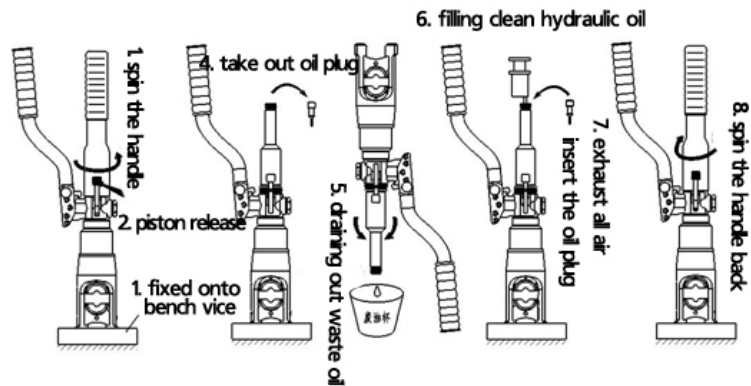
FAULT	ANALYSIS	SOLUTION
A. No pressure or the pressure is not enough during operation	1. The pump lacks oil 2. There is dust/air in oil 3. Inner leakage	1. Fill or replace the oil 2. Change the oil 3. Contact manufacturer or distributor
B. Oil leakage on the head or on the plunger	1. Sealing kit broken	1. Contact manufacturer or distributor and replace it by trained person

MAINTENANCE AND SERVICING

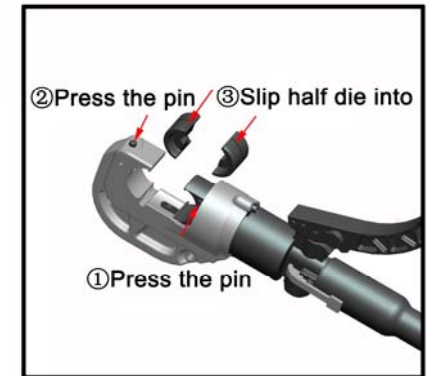
⚠WARNING

Damaged equipment can fail, causing serious personal injury. do not use damaged equipment. If abnormal noise or vibration occurs, have the problem corrected before further use.

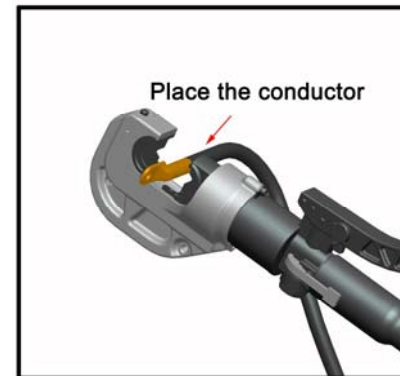
1. **BEFORE EACH USE**, inspect the general condition of the tool. Check for loose screws, misalignment or binding of moving parts, cracked or broken parts, and any other condition that may affect its safe operation.
2. **AFTER USE**, depress the release level to activate the piston to the end, clean external surfaces of the tool with clean, moist, smear the rust preventing oil on the metal surface of the tool and the dies to avoid rusty. Store the tool in the dry environment.
3. **Service to the tool should only be done by a qualified Service Technician.**
4. in order to prolong the life of the tool please change the oil per year. Make sure the oil filtered by 120 mesh net or over 30µm strainer. Meantime avoid the dusty into the oil cup.
5. **HOW TO CHANGE THE OIL**
It is best to have the manufacturer do this. The handle must remain in position shown during filling process or air will be introduced and it will not develop pressure.



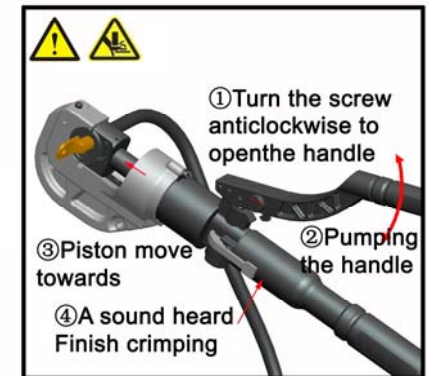
1.



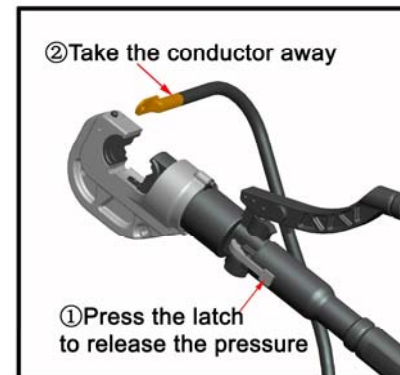
2.



3.



4.



5.



6.