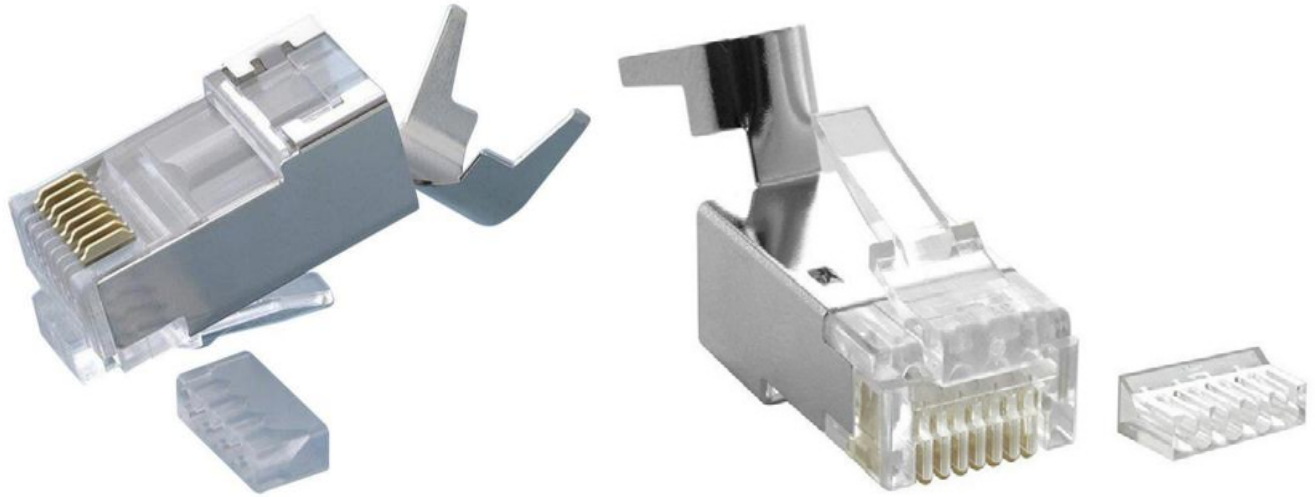


## **CAT7-HPPS-HP CAT7 RJ45 Connector**



### **DESCRIPTION**

RJ45 Connector quickly extends LAN cables without the need for soldering.

Connector type:	250V AC 2A
Wire mounting	Cable terminals
Application	Network Connection
Material	PC
Main Features	Very easy and quick assembly
Weight:	0.003kg
Dimensions	34 x 11.5 x 13mm

### **Ordering Information:**

CAT7-HPPS-HP

CAT7 RJ45 Connector, 100pk