

CA 6011

Continuity tester



A tester with built-in reeling box designed for your systematic earth bond continuity tests

You'll use it every day



IEC
61557-4

300 V
CAT IV

Measure up



Your product always to hand...

In the context of electrical installation safety, the different local legal frameworks impose a series of regular, systematic tests: earth test, insulation test, RCD test, etc.

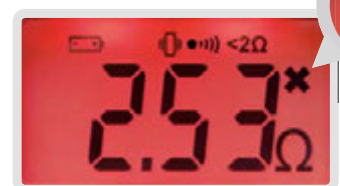
Among these tests, the most repetitive (more than 80 % of operations) is **systematic testing of the continuity of the protective earth conductors**.

The CA 6011 continuity tester has been specially designed to handle the users' constraints.



Clear indications

- Intuitive colours and symbols
- Deactivatable multiple selection



all day long



Vibrate mode enabled

Comfortable use

- Tester unit which can be assembled or separated, as preferred
- Shoulder strap and belt for excellent distribution of the weight, allowing intensive use
- Elastic strap on the back of the unit to wear it on your wrist



Battery life

- Up to **30,000 measurements** in real operating conditions!

Safety and conformity

- Automatic polarity reversal
- Like all Chauvin Arnoux products, the **CA 6011** has been designed to keep people safe, with visual and audible alerts.
- IEC 61010, 300 V CAT IV
- IEC 61557-4



Quick, comfortable reading

For multiple applications

Up to 200 Ω

- Perform systematic earth connection testing on the conducting parts of the equipment and installation
- Check the earth conductor of a lightning arrestor
- Check the meshing and earth connection of a Faraday cage
- Check the floorplans and equipotentiality



Continuity test

Choose the effectiveness of a single-function measuring instrument:

- . Simplicity
- . Time saving
- . Ergonomics

Technical specifications

Display	2,000 counts with two-colour backlighting	
Continuity		
Measurement range	0.00 Ω to 2.00 Ω	2.00 Ω to 20.00 Ω
Resolution	10 m Ω	
Measurement current	200 mA	20 mA
Open-circuit voltage	$\pm(4 \text{ VDC} < U < 6 \text{ VDC})$	
Resistance		
Measurement range	1.0 Ω to 200.0 Ω	
Resolution	100 m Ω	
Measurement current	10 mA	
Open-circuit voltage	$\pm(4 \text{ VDC} < U < 6 \text{ VDC})$	
Continuity threshold	Programmable 1 Ω ru 2 Ω	
Compensation of cable resistance	Yes, < 5 Ω	
Indication of test compliance / non-compliance	Visual and/or audible and/or vibrating, configurable	
Compliance with standards	IEC 61557-1 & IEC 61557-4 IEC 61010-1, IEC 61010-2-030 300 V CAT IV	
Automatic standby	10 minutes / deactivatable	
Battery life	30,000 measurements in real operating conditions 4,500 as per IEC 61557-4 protocol	
Voltage presence	Visual and audible	
Power supply	4 standard 1.5 V AA/LR6 batteries	
Dimensions (instrument + reeling box)	225 x 185 x 135 mm	
Weight	CA 6011 only: 350 g – Reeling box with 30 m cable: 1.2 kg	

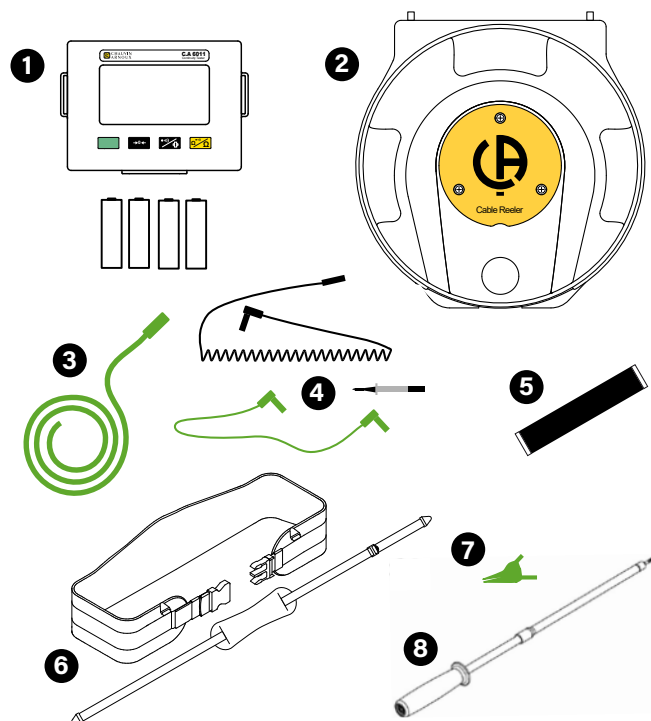
TO ORDER

		State at delivery
CA 6011 continuity tester KIT*	P01299926	1+2+3+4+5+6+7
CA 6011 continuity tester ALONE*	P01191611	1-5

Accessories & replacement parts

30 m reeling box	P01295492	2+3+6+7
Replacement parts for continuity	P01102173	4+7
30 m green cable	P01295493	3
CA 6011 elastic strap x 2 (strap on the casing to wear on the wrist)	P01102172	5
CA 6011 straps (shoulder strap and waist belt)	P01102171	6
Continuity rod	P01102084A	8

* Delivered with safety datasheet, quick start-up guide, user's manual and verification certificate.



9 06211588 - Ed. 1 - VS - 04/2019 - Non-contractual document. Specifications subject to modifications linked to technological developments.