

DATA LOGGERS

SIMPLE LOGGER® II



MODEL L261

One channel simple -logger for voltage measuring, monitoring and troubleshooting



FEATURES

- TRMS voltage recording up to 600 V_{AC/AC+DC}
- AC: 64 samples per cycle
DC: 8 samples per second
- Programmable storage rates from 8 every second to 1 every day
- 4 user selectable storage modes
- Stores up to 240,000 measurements in non-volatile memory
- Powered by standard alkaline batteries
- Lightweight and compact
- 5 LED indicators quickly and clearly display logger status
- Includes FREE DataView® software for data retrieval, real-time display, analysis and report generation
- Optically isolated USB 2.0 communication cable included
- EN 61010-1; 300 V CAT IV; 600 V CAT III

APPLICATIONS

- Long term supply monitoring
- Industrial, commercial and residential monitoring
- Find intermittent voltage problems
- Machine monitoring

MODEL	L261
ELECTRICAL	
Channels	One
Input Connection	Two recessed 4 mm safety banana jacks
Measurement Range	(0 to 600) V _{AC} / AC+DC
Resolution	0.1 V
Accuracy (50 / 60) Hz	(0 to 5) V: unspecified (5 to 50) V: ± (0.5 % of Reading + 1 V) (50 to 600) V: ± (0.5 % of Reading + 0.5 V)
Input Impedance	40 MΩ
Sample Rate	64 samples / cycle
Storage Rate	Programmable from 8 every s to 1 every d
Storage Modes	Start / Stop, FIFO, Extended Recording Mode (XRM™) and Alarm
Recording Length	15 min to 8 weeks, programmable using DataView®
Memory	240,000 measurements (512 kB) The recorded data is stored in non-volatile memory and will be retained even if the battery is low or removed.
Communication	USB 2.0 optically isolated
Power Supply	(2) 1.5 V AA-cell alkaline batteries (included)
Battery Life	100 h to > 45 d (dependent on sample rate and recording length)
MECHANICAL	
Dimensions	(4.94 x 2.75 x 1.28) in (125 x 70 x 32) mm
Weight (with battery)	6.4 oz (181 g)
Case	UL94-V0
Vibration	IEC 60068-2-6 (1.5 mm, 10 Hz to 55 Hz)
Shock	IEC 60068-2-27 (30 G)
Drop	IEC 60068-2-32 (1 m)

Consult factory for NIST Calibration prices.

PRODUCT INCLUDES

USB cable, (1) set of color-coded (red/black) leads and alligator clips and a USB drive with DataView® software.



CAT. #	DESCRIPTION
--------	-------------

2126.05	Simple Logger® II Model L261 (1-Channel, TRMS, 600 V _{AC/AC+DC} , DataView® Software)
---------	--

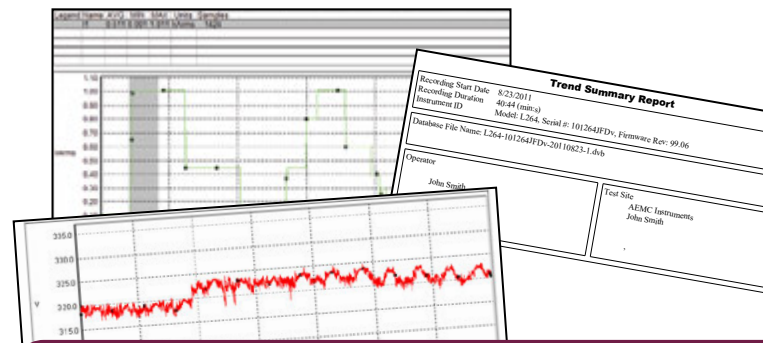


DataView® Data Analysis and Reporting Software

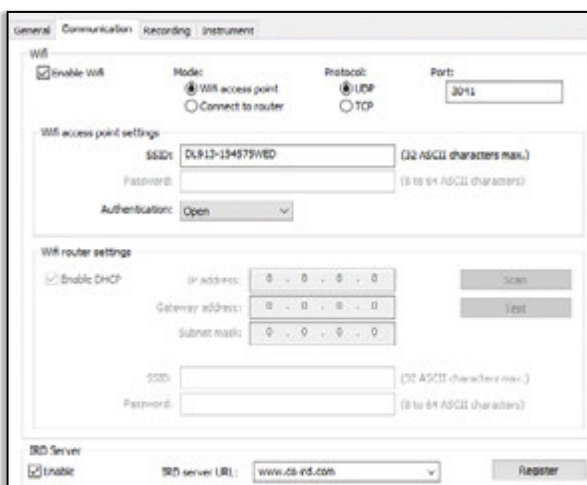


DataView® software, user manual and quick start guide are included in the USB Drive

- Display and analyze real-time data on your PC
- Configure all data logger functions and parameters from your PC including sample rate, communication, recording length, channel configuration and more
- Create and store a library of configurations that can be uploaded to the logger as needed
- Pan and zoom through sections of the graph to analyze the data
- Display trend graphs and text summaries
- Print reports using standard or custom templates
- Free software upgrades are available



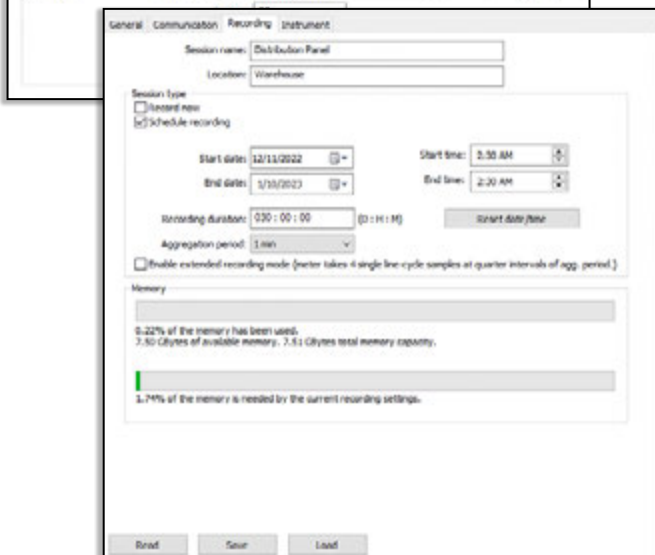
Reports can be displayed on a PC and printed. Each report includes all test results in a tabular and graphic format, as well as operator and test site information. Comments typed by the operator will also be included.



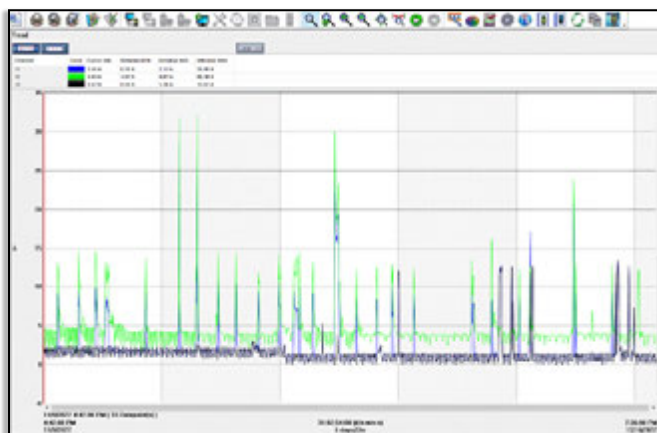
Configuring the data logger's general communication, recording, and instrument options is simple with the DataView® control panel software.

The top left image represents the communication configuration tab with Wi-Fi enabled.

The recording tab provides sample and storage rate selections, recording length and schedule, session type, and the extended recording mode option.



Create, view, edit and store reports from the instrument's recorded data with the included DataView® software.



One month split-phase trend monitoring.