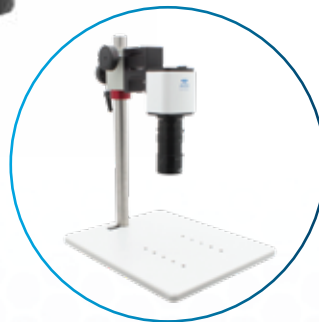


Built-In
Measurement
Software
Mosaic 2.1

HDMI, USB
and SD Card
Outputs
Capture & Save
Images Directly
To SD Card

Auto Focus
**FULL HD
1080p**

**60fps
HDMI**
**30fps
SD Card, PC
and USB**



Mighty Cam Pro

Auto Focus HDMI/USB/SD

Aven's Mighty Cam Pro is an all-in-one inspection auto-focus camera. This camera offers both USB and HDMI outputs for inspection from an HD monitor or your PC via the included Mosaic software. This camera features integrated measurement capabilities for measuring without a PC. This camera also features a built-in SD card port for capturing instant high resolution images with no need for a PC.

Macro Lens



Micro Lens



Mighty Cam Pro Features:

- Camera offers both continuous and single-shot auto focus modes.
- Data transfer up to 60 frames per second
- HDMI, USB2.0 and SD card outlets
- Save images directly to SD card *no computer required*
- Includes software Mosaic 2.1
- Attachable lenses available for purchase
- Attachment on back of camera to easily attach to N-Mount
- Real time image stitching
- Perfect color reproduction
- Professional digital image measurement software system

Mosaic 2.1

Imaging Software

Flip over to read more about this software



| Mighty Cam Pro | |
|------------------|--|
| Item Number | 26100-258 |
| PC Software | Mosaic 2.1 |
| Resolution | 2MP 1920x1080 |
| Frame Rate | 60 fps @HDMI, 30fps @USB2.0 |
| Video Recording | 30fps @SD Card, 30 fps @PC |
| Outputs | HDMI, USB2.0 and SD Card |
| Package Contents | Mighty Cam Pro, power supply, a USB Mouse and an SD Card |

Mosaic 2.1

Imaging Software

Mosaic Software

Compatible with Mosaic V2.1 Computational Imaging Software. Fast, efficient and worry-free the core design concept of Mosaic V2.1 software. It adopts a new image "shooting-processing-measurement-reporting" function, modular design, and integrates various intelligent image processing algorithms. It is dedicated to providing users with more simple operation modes and improve work efficiency in all circumstances.

Professional Digital Image Measurement System

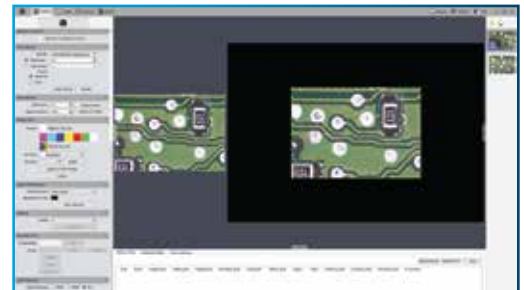
Mighty Cam Pro provides extremely powerful measurement functionalities including, freehand line, rectangle, polygon, circle, bi-circle, angle, point-line distance and much more. Three different length units of millimeter, centimeter, and micrometer are provided to meet various measurement requirements in different applications.

Real-Time Image Stitching

It can generate large-sized mosaic images in a few seconds while moving the stage, which is light, smooth and worry-free! Real-time depth-of-field fusion.

Perfect Color Reproduction

Aven's color processing is capable of a new level of precision, matches the monitor image to the eyepiece view, produces extremely-high color definition.



Mighty Cam System Bundles AVEN Offers



Mighty Cam Pro
on Ultra Glide Stand
#258-181-556-PRO
Monitor, computer macro lens, and
gooseneck LED light included



Mighty Cam Pro
on Post Stand
#258-181-576-PRO
Monitor, computer macro lens,
and gooseneck LED light included



Mighty Cam Pro
w/ Stereo Microscope
#DSZV-44-258-512-PRO
#SPZV-50-258-512-PRO
#SPZHT-135-258-512-PRO
Various Stereo Zoom Systems on PLED
Stands with monitor included on all



Mighty Cam Pro
on Post Stand
#26700-109-PRO
Monitor, Aven micro lens, additional
.5x lens and LED ring light included