



CD 600 series

SPECIFICATIONS:

RANGE / RESOLUTION

CD600	1990 ppm / 10 ppm
CD610	10000 ppm / 100 ppm
CD601	1990 μ S/cm / 10 μ S/cm
CD611	19900 μ S/cm / 100 μ S/cm

ACCURACY $\pm 2\%$ Full Scale
(@20°C)

TYPICAL EMC DEVIATION

CD600	$\pm 2\%$ Full Scale
CD610	$\pm 2\%$ Full Scale
CD601	$\pm 2\%$ Full Scale
CD611	$\pm 2\%$ Full Scale

CALIBRATION SOLUTION

CD600	M10032B (optional)
CD610	M10038B (optional)
CD601	M10031B (optional)
CD611	M10030B (optional)

TEMPERATURE COMPENSATION Automatic from
5 to 50°C

ENVIRONMENT 5 to 50°C
95% RH

BATTERY TYPE 4x1.5V alkaline
LIFE 300 hours approx.

DIMENSIONS 150x30x24 mm
WEIGHT 85g

ACCESSORIES

MA9300	1.5 battery (10 pcs.)
MA9701	Calibration Screwdrivers (20pcs)
M10030B	Calibration 20mL sachet 12880 μ S/cm solution (25pcs.)
M10031B	Calibration 20mL sachet 1413 μ S/cm solution (25pcs.)
M10032B	Calibration 20mL sachet 1382 ppm solution (25pcs.)
M10038B	Calibration 20mL sachet 6.44 ppt solution (25pcs.)

Calibration solutions are also available in 230mL bottles.

CD 600 series

Conductivity &
TDS Meters
with ATC



TestEquipmentDepot.com

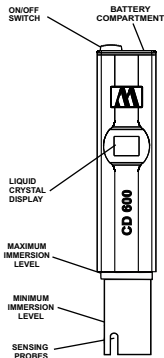


Milwaukee

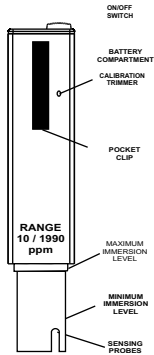


Milwaukee

Buy from the Source and Save Money!



FRONT



BACK

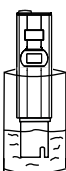
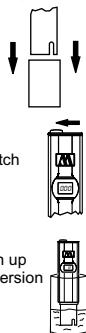
OPERATION:

- Remove the protective cap
- Turn the meter on with the ON/OFF switch located on the top.
- Immerse into solution up to the maximum immersion level.
- Stir gently and wait until the display stabilizes. The meter compensates for the temperature variance automatically.
- Read the value on the display. This value has to be multiplied by a factor of 10 for **CD 600 & 601**, and by a factor of 100 for **CD 610 & 611** as shown in the upper left hand corner of the LCD to give direct readings in ppm (mg/L) or $\mu\text{S/cm}$ ($\mu\text{mho/cm}$)

CALIBRATION:

The calibration procedure is very simple and fast.

- Immerse the tester up to the maximum level into the appropriate optional Calibration Solution (see Specifications).



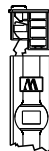
- Allow the reading to stabilize and using a small screwdriver turn the Calibration Trimmer to match the solution value (normally to the value at 25°C). E.g. calibrating a **CD600** using **M10032B** as calibration solution, turn the trimmer to read "138" (multiplied by 10= 1380 ppm)



Calibration is now complete.

BATTERY REPLACEMENT:

When the meters cannot be switched on or the display fades, pull out the battery compartment and replace all four 1.5V batteries, paying attention to their polarity.



Batteries should only be replaced in a non-hazardous area using the battery types specified in this instruction manual.

RECOMMENDATIONS FOR USERS:

Before using this product, make sure that it is entirely suitable for the environment in which they are used. Operation of these instruments in residential areas could cause unacceptable interferences to radio and T.V. equipment. The pins at the end of the sensor are sensitive to electrostatic discharges. Avoid touching this metal band at all times. During operation of instruments ESD wrist straps should be worn to avoid possible damage to the sensor by electrostatic discharge. Any variation introduced by the user to the supplied equipment may degrade the instrument EMC performance. To avoid electrical shock, do not use the instrument when voltage at the measurement surface exceed 24VAC or 60VDC. To avoid damages or burns, do not perform any measurement in microwave ovens.