

GENERAL®

Data Logging Hot Wire Anemometer w/ CFM/CMM and 8:1 IR Thermometer

Ideal for measuring speed, volume and temperature of slow-moving air

Features & Benefits:

- Data logging capacity: 20,000 data points via USB interface
- Measures air flow volume up to 2.5 million CFM (72,000 CMM)
- Hot wire sensor detects even the slightest (2.0 ft./min) air movement; also measures ambient temperature
- Five available air speed units: ft./min, m/sec, mph, km/hr, knots
- 8:1 IR thermometer with laser pointer has measurement range of -25° to 999°F (-32° to 537°C)

Includes:

USB cable, PC Interface Software, AC Adapter, 1 "9V" Battery, Hard Carrying Case, User's Manual and Warranty

RoHS  

No. CIH20DL



Large backlit LCD simultaneously displays air flow volume or speed from hot wire sensor plus remote surface temperature from IRT

**Test Equipment
Depot**

1-800-517-8431

99 Washington Street
Melrose, MA 02176
Phone 781-665-1400
Toll Free 1-800-517-8431





Data Logging Hot Wire Anemometer w/ CFM/CMM and 8:1 IR Thermometer

Ideal for measuring speed, volume and temperature of slow-moving air

Specifications:

Air Flow Volume Measurement Range/Resolution:
0 to 2,542,700 CFM (0 to 72,000 CMM)/0.01 CFM (0.001 CMM)

Air Speed Measurement Range:
2.0 to 7874 ft./min (20mm/sec to 40m/sec)

Air Speed Measurement Accuracy: $\pm 3\% + 5.9$ ft./min (0.03m/sec)

IRT Distance-To-Spot (D:S) Ratio: 8:1

IRT Emissivity: 0.95 (fixed)

IRT Measurement Range: -25° to 999°F (-32° to 537°C)

IRT Measurement Accuracy:
 $\pm 5.4^\circ\text{F}$ ($\pm 3^\circ\text{C}$) from -25° to -4°F (-32° to -20°C);
 $\pm 3.6^\circ\text{F}$ ($\pm 2^\circ\text{C}$) from -4° to 212°F (-20° to 100°C);
 $\pm 2\%$ from 212° to 999°F (100° to 537°C)

IRT Measurement Resolution: 0.1°(F or C)

IRT Response Time: 0.5 seconds, max

Hot Wire Sensor Temperature Measurement Range/Accuracy:
32° to 158°F (0° to 70°C)/ $\pm 1.5^\circ\text{F}$ ($\pm 0.8^\circ\text{C}$)

Resolution: 0.1°F (0.1°C)

Memory: Nine readings + Max/Min/Avg + Data Hold

Extended Length of Telescoping Hot Wire Probe:
70.8 in. (1.8m)

Dimensions:
7.24 x 2.75 x 1.57 in. (184 x 70 x 40mm)

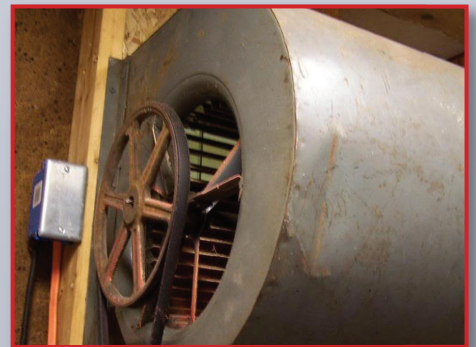
Weight: 11.3 oz. (320g)

Power Source: 1 "9V" battery (included)

RoHS



No. CIH20DL



A low-speed squirrel cage blower motor



Enables minimally invasive duct flow testing



Air movers wrapping up a water damage restoration project



Test Equipment Depot
1-800-517-8431

99 Washington Street
Melrose, MA 02176
Phone 781-665-1400
Toll Free 1-800-517-8431

Visit us at www.TestEquipmentDepot.com