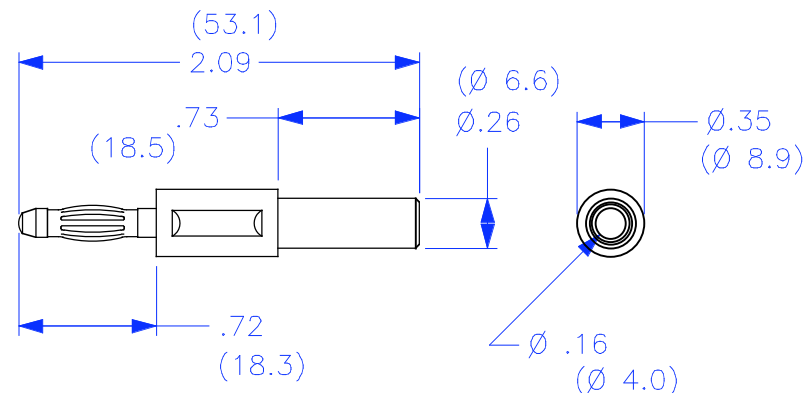


THIS IS ISSUED IN STRICT CONFIDENCE THAT IT IS NOT USED AS A BASIS FOR MANUFACTURE OR SALE AND THAT IT IS NOT COPIED, REPRINTED OR DISCLOSED TO A THIRD PARTY EITHER WHOLLY OR IN PART WITHOUT THE PRIOR WRITTEN CONSENT OF CAL TEST ELECTRONICS, INC.

Test Equipment Depot
 99 Washington St. Melrose MA, 02176
 1.800.517.8431 | 781.665.0780 (Fax)
 Visit us at www.TestEquipmentDepot.com

REVISIONS			
REV.	DESCRIPTIONS	DATE	APPROVED
—	CLASS A RELEASED	7/12/99	

- ADAPTER, 4mm BANANA PLUG WITH 4mm BANANA JACK.
- SPECIFICATIONS:
 INSULATOR: POLYACETAL
 PLUG BODY: BRASS, NICKEL PLATED
 SPRING BODY: BERYLLIUM COPPER, NICKEL PLATED
- RATING:
 CURRENT: 10A MAX.
 RESISTANCE: <0.8mΩ.
 TEMPERATURE: -20° C TO +80° C.



PART NUMBER

CT2473-#

COLOR: 0 — BLACK
 2 — RED
 4 — YELLOW
 5 — GREEN
 6 — BLUE
 9 — WHITE

THIRD ANGLE PROJECTION		UNLESS OTHERWISE SPECIFIED DIMENSIONS ARE IN INCHES TOLERANCES ARE: FRACTIONS DECIMALS ± 1/32 .XX ± .02 .XXX ± .005 DO NOT SCALE DRAWING		CONTRACT NO.		Cal Test Electronics 22820 Savi Ranch Parkway Yorba Linda, CA	
		MATERIAL		APPROVALS		TITLE	
		FINISH		DATE		4mm BANANA PLUG ADAPTER w/4mm JACK	
NEXT ASSY		USED ON		DRAWN WDH		7/12/99	
APPLICATION				CHECKED		SIZE A	
				ENGR.		CAGE CODE 43F45	
				DESIGN ACTIVITY		DWG. NO. P247300	
						REV. —	
				SCALE 1:1		SHEET 1 OF 1	