

THIS IS ISSUED IN STRICT CONFIDENCE THAT IT IS NOT USED AS A BASIS FOR MANUFACTURE OR SALE AND THAT IT IS NOT COPIED, REPRINTED OR DISCLOSED TO A THIRD PARTY EITHER WHOLLY OR IN PART WITHOUT THE PRIOR WRITTEN CONSENT OF CAL TEST ELECTRONICS, INC.

Test Equipment Depot
 99 Washington St. Melrose MA, 02176
 1.800.517.8431 | 781.665.0780 (Fax)
 Visit us at www.TestEquipmentDepot.com

REVISIONS			
REV.	DESCRIPTIONS	DATE	APPROVED
—	CLASS A RELEASED	11/12/07	

- DO-IT-YOURSELF (DIY) Ø4mm RIGHT-ANGLE SHEATH BANANA PLUG, SCREW ATTACHMENT
- SPECIFICATIONS:
 INSULATOR BODY: POLYPROPYLENE
 PLUG BODY: BRASS, NICKEL PLATED
 CONTACT SPRING: BECU, NICKEL PLATED
- RATING:
 VOLTAGE: 1000 V CATIII P2 (* Instructions)
 REINFORCED INSULATION, CE MARK
 CURRENT: 20 A MAX.
 INTERNAL RESISTANCE: <10 mΩ
 TEMPERATURE: -20° TO +80° C.
- MAXIMUM WIRE SIZES:
 CONDUCTOR: Ø .090 (12AWG)
 INSULATION: Ø .16 (Ø 4.0)
 STRIP LENGTH: .20 (5)

PART NUMBER

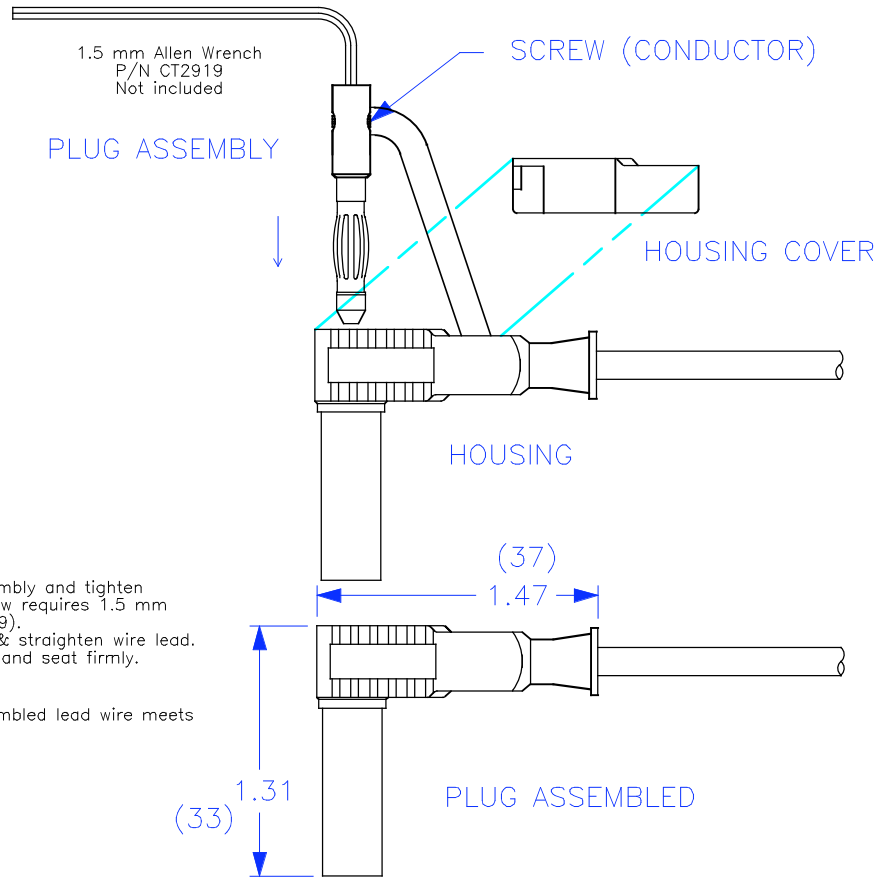
CT3203-#

- COLOR:
- 0 - BLACK
 - 2 - RED
 - 4 - YELLOW
 - 5 - GREEN
 - 6 - BLUE
 - 9 - WHITE

Assembly Instructions:

- Slide wire through Housing.
- Strip wire .20" (5 mm).
- Insert stripped wire into Plug Assembly and tighten Set-Screw (conductor). Set-Screw requires 1.5 mm Allen Wrench (Cal Test P/N CT2919).
- Push Plug Assembly into Housing & straighten wire lead.
- Push Housing Cover onto Housing and seat firmly.
- Plug is assembled.

* IEC specification is met only if assembled lead wire meets requirement and voltage rating.



THIRD ANGLE PROJECTION		UNLESS OTHERWISE SPECIFIED DIMENSIONS ARE IN INCHES TOLERANCES ARE: FRACTIONS DECIMALS ± 1/32 .XX ± .02 DO NOT SCALE DRAWING .XXX ± .005		CONTRACT NO.		Cal Test Electronics 22820 Savi Ranch Parkway Yorba Linda, CA					
		MATERIAL		APPROVALS		DATE		TITLE			
		FINISH		DRAWN WDH		11/12/07		DIY 4mm RIGHT-ANGLE SHEATH PLUG, SCREW ATTACHMENT			
NEXT ASSY		USED ON		ENGR.		DESIGN ACTIVITY		SIZE A	CAGE CODE 43F45	DWG. NO. P320300	REV. —
APPLICATION								SCALE 1:1	SHEET 1 OF 1		