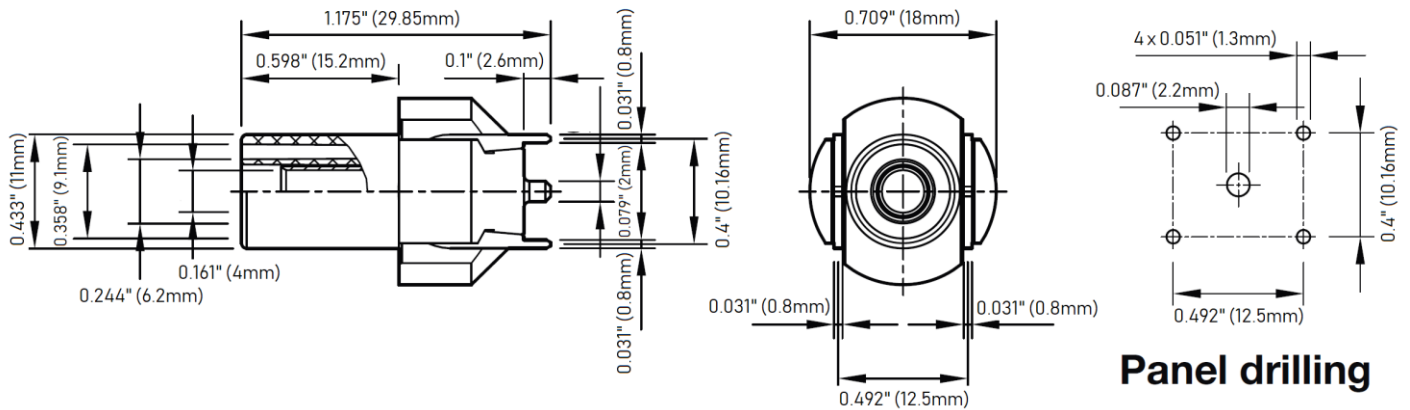


Model 73096
4mm Safety Jack for PCB



Features

- In-line design is ideal for mounting on vertical printed circuit boards
- Insulated 4mm safety jack mates with sheathed banana plug test leads
- Center contact is a 2mm round pin with 0.8mm contacts (x4) for mounting on printed circuit boards
- IEC/EN 61010-1 rated for increased safety
- Machined brass
- Compatible with popular Pomona test lead models 5907A, 5908A, and 5909A test lead sets

Ratings

Voltage: CAT III 1000V / CAT IV 600V
Current: 24 A

Ordering Information

Model: 73096-*color*
Color: 0=Black, 2=Red
4mm Safety Jack for PCB



Test Equipment Depot - 800.517.8431 - 99 Washington Street Melrose, MA 02176 - TestEquipmentDepot.com

All dimensions are in inches. Tolerances (except noted): .xx = ±.02" (.51 mm), .xxx = ±.005" (.127 mm). All specifications are to the latest revisions. Specifications are subject to change without notice. Registered trademarks are the property of their respective companies.