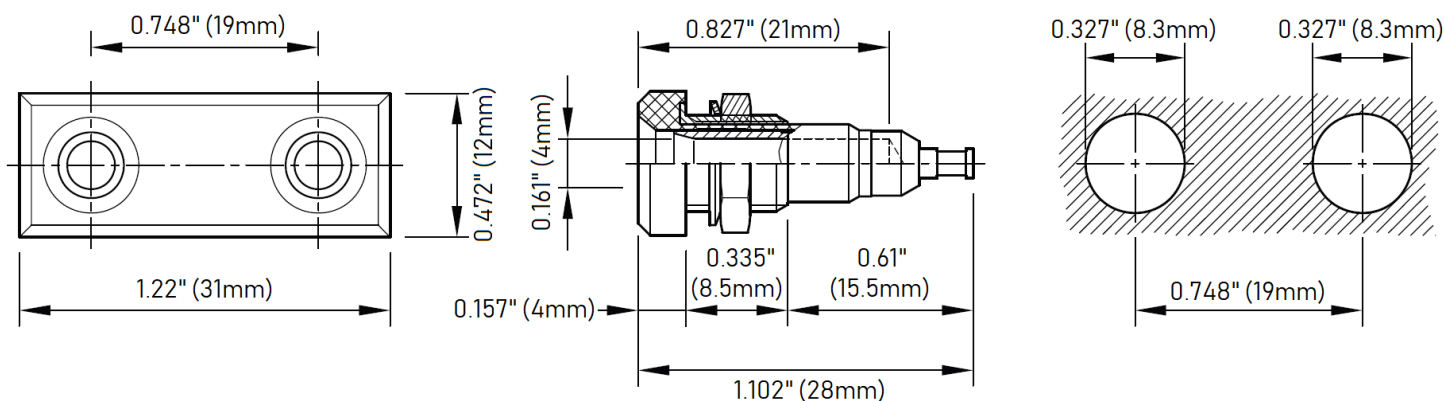


**Model 73101**  
**Panel Mount Double 4mm Banana Jack**



**Features**

- Convenient one-piece rigid design
- Insulated 4mm double banana jack
- Ideal for screw-mounting onto pre-drilled panels
- Solder turrets for solder connections
- Machined brass
- Includes double banana jack, hex nuts, and washer

**Ratings**

Voltage: 30 V AC / 60 V DC

Current: 25 A

**Ordering Information**

Model: 73101-*color*

*Color*: 0=Black

Panel Mount Double 4mm Banana Jack



Test Equipment Depot - 800.517.8431 - 99 Washington Street Melrose, MA 02176 - TestEquipmentDepot.com

All dimensions are in inches. Tolerances (except noted): .xx = ±.02" (.51 mm), .xxx = ±.005" (.127 mm). All specifications are to the latest revisions. Specifications are subject to change without notice. Registered trademarks are the property of their respective companies.