

3 & 4 Channel AC Current Data Loggers

MODELS DL913 & DL914

Simple-To-Use

- Includes integral 24-inch flexible current sensors
- Current measurements from 500 mA up to 3600 A
- Frequency measurements
- DataView® software for data storage, real-time display, analysis and report generation
- Rated 600 V CAT IV, 1000 V CAT III, complies with IEC 61010-2-032
- Rechargeable battery and USB power options
- Flame retardant, lightweight, compact, waterproof IP67
- View real-time measurements with LCD display

***Accurate and Reliable
Logging and Monitoring***

Our products are backed by over 130 years of experience in test and measurement equipment, and encompass the latest international standards for quality and safety.

FEATURES & KEY SPECIFICATIONS

3 & 4 CHANNEL AC DATA LOGGERS

MODELS DL913 & DL914

Waterproof three and four channel AC data loggers with flexible sensors

SPECIFICATIONS

MODELS	DL913 / DL914				
ELECTRICAL					
Channels	3 (DL913) / 4 (DL914)				
Inputs	MiniFlex®				
Measurement Ranges	300 AAC / 3000 AAC				
Accuracy	300 A range		3000 A range		
	(0.50 to 99.99) A ±(1 %r + 10 D)	(90.0 to 360.0) A ±(1 %r + 4 D)	(4.00 to 99.99) A ±(1 %r + 10 D)	(90.0 to 999.9) A ±(1 %r + 5 D)	(0.900 to 3.600) kA ±(1 %r + 4 D)
Resolution	0.01 A	0.1 A	0.01 A	0.1 A	1 A
Frequency	(45 to 65) Hz ± 0.1 Hz				
Storage Rate	Normal recording mode: Once per second Extended recording mode: Four per aggregation period				
Recording Length	Battery Power: 4 days with no missing samples (normal recording mode) 7 to 30 days depending on the selected aggregation period (extended recording mode) External Power: 365 days				
Memory	Internal (8 GB)				
Communication	USB, Wi-Fi via router (Ethernet), or Wi-Fi Direct				
Battery Charge Time	10 hours maximum (Wi-Fi off)				
Power Sources	Internal: 4.3 A-h NiMH rechargeable battery pack External: USB connection				
MECHANICAL					
Dimensions	(5.9 x 5.9 x 3.57) in (150 x 150 x 91) mm w/o sensors				
Weight (with battery)	DL913: 2.2 lbs (1 kg) DL914: 2.42 lbs (1.1 kg)				
Sensor/Cable Length	3 (DL913) or 4 (DL914) integral 24 in (610 mm) MiniFlex® probes with 6.5 ft (2 m) leads				
Max. Conductor	7.64 in (190 mm)				
Case	UL94-V0 Flame retardant				
Vibration	IEC 68-2-6 (1.5 mm, 10 Hz to 55 Hz)				
Shock	IEC 68-2-27 (30 G)				
Drop	IEC 68-2-32 (3.3 ft [1 m] in the most severe position without permanent mechanical damage or functional deterioration)				
ENVIRONMENTAL					
Operating/Storage Temperature	(14 to 122) °F (-10 to 50) °C / (-40 to 158) °F (-40 to 70) °C				
Relative Humidity	Operation: up to 85 % RH (non-condensing) Storage: up to 95 %RH				



DL913



with USB cap on and cover closed

DataView®

FEATURES

- Simple-to-use, 3 (DL913) and 4 (DL914) channel AC current data loggers
- 4th channel for neutral current monitoring (Model DL914)
- Includes 3 (DL913) or 4 (DL914) integral 24-inch flexible current sensors
- Current measurements from 500 mA up to 3600 A
- LCD display to view real-time measurements and parameters such as memory, power, and communication status, configure the instrument, and change viewing modes
- Built-in web server for remote monitoring
- Battery and/or USB powered options
- Frequency measurements
- Wi-Fi and USB communications
- Waterproof IP67 rated (USB cap on and cover closed)
- Flame retardant case
- Logged data can be downloaded, analyzed, and formatted into reports using the FREE DataView® software

APPLICATIONS

- Single/Split-phase and 3- or 4-phase load monitoring
- Neutral and ground current monitoring
- Intermittent problem detection
- Machine load monitoring
- Fault current detection
- Load profiling




PRODUCT INCLUDES

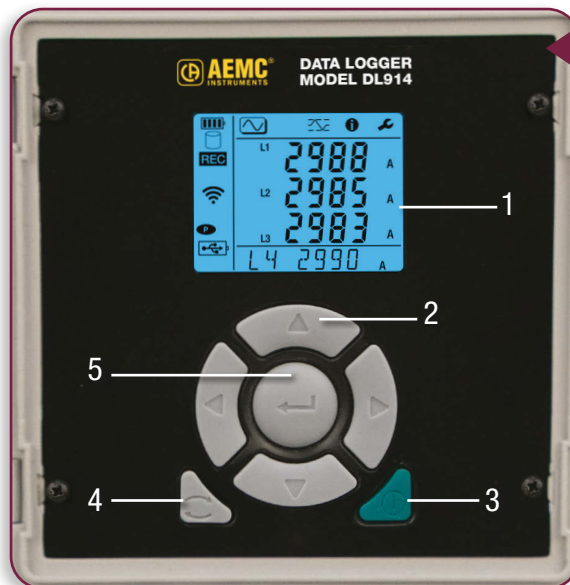
Includes small classic tool bag, 10 ft USB Type A to Type B cable, (4) stainless steel mounting brackets, (4) stainless steel M4 machine screws, USB power adapter, quick start guide, and USB thumb drive with DataView® software and user manual.

FUNCTIONAL DISPLAY & SOFTWARE


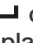
CONTROL FEATURES - FRONT PANEL

The data logger's LCD display allows the user to configure and set up a recording with selected parameters for which specific user-defined criteria can be applied. Measurements are recorded and can be accessed for analysis and report generation on a PC utilizing our proprietary DataView® software.

1. LCD displays measurement data and viewing parameters such as memory, power, and communication status.
2. Navigation buttons (Up ▲, Down ▼, Left ◀, Right ▶) navigate the configuration options and measurement screens.
3. Power button  turns the instrument ON and OFF with a press (≥ 3 s) when the instrument is disconnected from external power and not actively recording. A short press (≤ 3 s) turns the LCD backlight on.



Front View

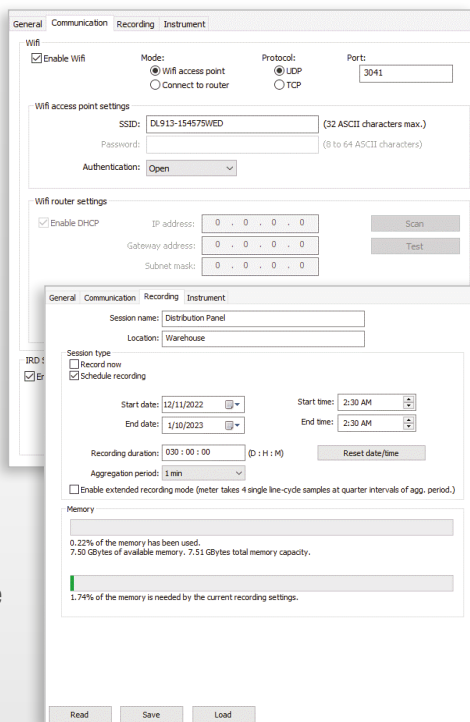
4. Control button  starts and stops recordings and selects and enables the Wi-Fi communication type.
The Control button has a default duration of 30 days with the configured recording mode and aggregation time.
5. Enter button  cycles through the displayed data and options.

DataView®

Data Analysis and Reporting Software

Easy to access, download and view real-time and recorded data!

- Display and analyze real-time data on your PC
- Configure all data logger functions and parameters from your PC including sample rate, communication, recording length, channel configuration and more
- Create and store a library of configurations that can be uploaded to the logger as needed
- Pan and zoom through sections of the graph to analyze the data
- Display trend graphs and text summaries
- Print reports using standard or custom templates you design
- Free software upgrades are available

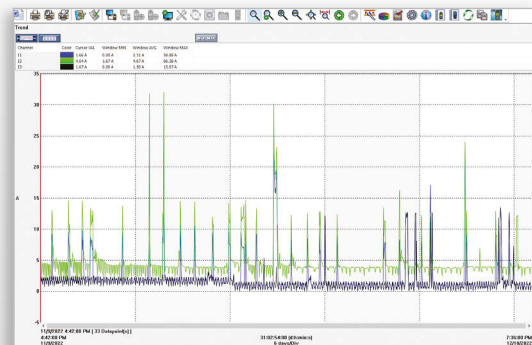


Configuring the data logger's general communication, recording, and instrument options is simple with the DataView® control panel software.

The top left image represents the communication configuration tab with Wi-Fi enabled.

The recording tab provides sample and storage rate selections, recording length and schedule, session type, and the extended recording mode option.

Create, view, edit and store reports from the instrument's recorded data with the included DataView® software.



One month split-phase trend monitoring.

CATALOG NO.	DESCRIPTION
2153.61	Data Logger Model DL913 (3-channel, TRMS, MiniFlex® 300 A / 3000 A, Wi-Fi, DataView® Software)
2153.62	Data Logger Model DL914 (4-channel, TRMS, MiniFlex® 300 A / 3000 A, Wi-Fi, DataView® Software)

TEST & MEASUREMENT INSTRUMENTS

VOLUME 23
WWW.AEMC.COM
TECHNICAL HOTLINE:
(800) 343-1391

AEMC
INSTRUMENTS
CHAUVIN ARNOUX GROUP

- Cable Testers
- Clamp-On Meters
- Current Measurement Probes
- Data Loggers
- Digital Multimeters
- Electrical Test Tools
- Environmental Testers
- Ground Resistance Testers
- Leakage Current Meters & Probes
- Megohmmeters
- Micro-Ohmmeters
- Oscilloscopes
- Power/Energy Quality Analyzers, Meters & Loggers
- Test and Measurement (T&M) Instruments
- Thermal Imaging Cameras
- Transformer Ratio Meters

GROUND RESISTANCE TESTERS
For all of your Ground Integrity Testing needs...

The family of Ground Resistance Testers is chosen for...

When you are using a standard 2-Point, 4-Point, 3- or 4-Point, 4- or 4-Point test, a soil resistivity test or a touch potential test, AEMC has the professional choice. Our Ground Resistance Tester will have you up and testing in minutes. You can connect it to your phone, tablet or PC. Our Ground Resistance Tester will have you up and testing in minutes. You can connect it to your phone, tablet or PC.

Our products are backed by over 125 years of experience in test and measurement equipment, and encompass the latest international standards for quality and safety.

Technical Hotline: (800) 343-1391
www.aemc.com

AEMC
INSTRUMENTS
CHAUVIN ARNOUX GROUP

POWER QUALITY
For All Your Power Quality Needs...

A Family of Power Quality Analyzers, Loggers & Meters

Power quality is a critical concern for all industrial and commercial facilities. AEMC's Power Quality Analyzers, Loggers & Meters provide the most comprehensive and accurate measurement of power quality. They can measure and record a wide range of power quality parameters, including voltage sags, swells, transients, and harmonics. They can also measure and record the total harmonic distortion (THD) and the total demand distortion (TDD) of the power system. AEMC's Power Quality Analyzers, Loggers & Meters are available in a variety of configurations to meet the needs of different applications. They can be used for on-site testing, for long-term monitoring, and for data logging. They can also be used for compliance testing and for troubleshooting power quality problems.

Our products are backed by over 125 years of experience in test and measurement equipment, and encompass the latest international standards for quality and safety.

Technical Hotline: (800) 343-1391
www.aemc.com

AEMC
INSTRUMENTS
CHAUVIN ARNOUX GROUP

MEGOHMMETERS
For all of your Insulation Testing needs...

An array of Megohmmeters for choice from AEMC offers a full line of megohmmeters with test voltages from 10V to 50kV. Product dependent, complete insulation resistance test sets are available from 1000V to 200V. These rugged, weather-resistant meters are accurate, reliable and built to last. Spare parts and test leads are available.

Our products are backed by over 125 years of experience in test and measurement equipment, and encompass the latest international standards for quality and safety.

Technical Hotline: (800) 343-1391
www.aemc.com

AEMC
INSTRUMENTS
CHAUVIN ARNOUX GROUP

FAMILY of PRODUCTS

THE SMART CHOICE
FOR ELECTRICAL TEST & MEASUREMENT INSTRUMENTS