



THE 
DONGLER™
UNLOADED

PATENT PENDING

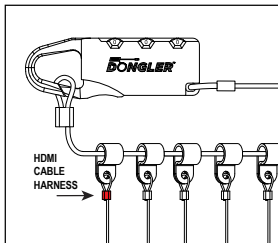
INSTRUCTION MANUAL

HDMI, the HDMI Logo, and High-Definition Multimedia Interface are trademarks or registered trademarks of HDMI Licensing LLC in the United States and other countries.

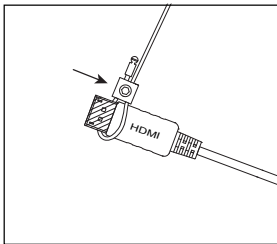
The Dongler™ is not designed to be an invulnerable protection measure. The Dongler is designed to discourage casual theft or inadvertent removal of attached dongles and adapters. The Dongler™ and GoSimplyConnect™ are trademarks of SIMPLY45 LLC © All rights reserved.

I. Connecting HDMI® Cable to The Dongler

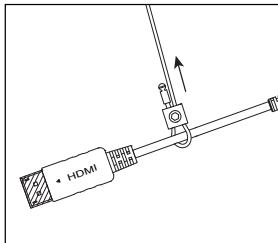
1. Remove The Dongler™ and all harnesses from packaging.



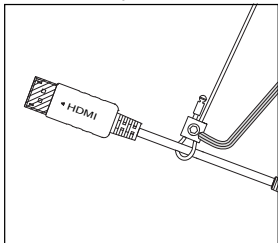
2. Connect HDMI cable harness loop over the HDMI infrastructure cable (not included). Widen loop if necessary by loosening wire lock.



3. After loop is passed over HDMI cable connector, loosely tighten the wire loop.



4. Tighten hex screw with enclosed tool. The HDMI cable harness should easily slide over the HDMI cable. Do not overtighten loop.



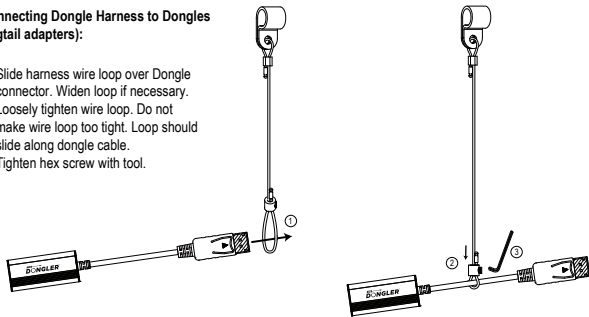
The loop should not exceed the size of the HDMI connector strain relief.

II. Connecting Dongles/Adapters to The Dongler

The Unloaded Dongler is a truly universal dongle and adapter ring holder. You can attach any brand of dongle (pigtail adapter) or adapter to your Dongler. Please follow the steps below.

Connecting Dongle Harness to Dongles (pigtail adapters):

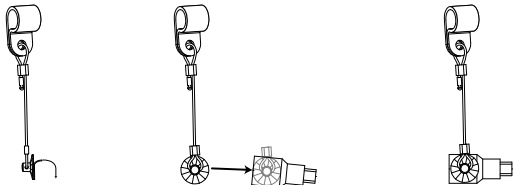
1. Slide harness wire loop over Dongle connector. Widen loop if necessary.
2. Loosely tighten wire loop. Do not make wire loop too tight. Loop should slide along dongle cable.
3. Tighten hex screw with tool.



Connecting Adapter Harness to Adapters:

Note: Adapter Harness uses an industrial adhesive to permanently attach adapters to the harness. Do not try to remove after application.

1. Remove protective film from sticky pad.
2. Firmly press sticky pad onto center of the adapter and hold for 2-3 seconds.
3. Adapter is now attached to harness.

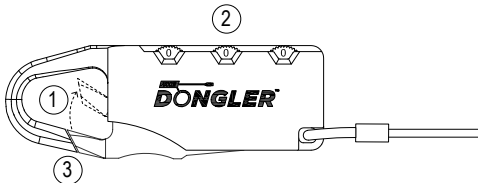


III. Combination Lock Guide

Set up the code and lock:

1. Press the opening from the bottom and hold.
2. Set dials to desired combination code.
3. Release the opening.
4. Turn dials to random numbers.

Lock is now set to new combination



Unlock:

1. Turn the numbers to your lock code.
2. Press the opening.

Code Reset:

1. Repeat "Set up the code and lock" process when it's unlocked.

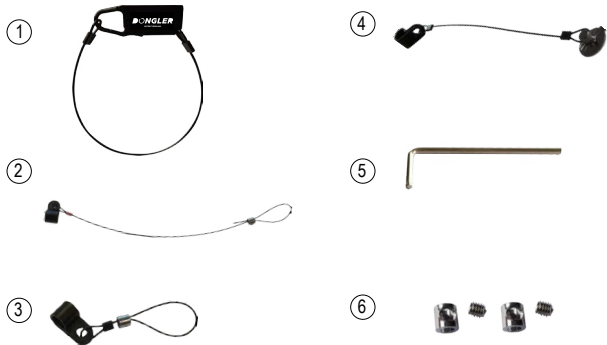
**The default code is "000"

by
GO Simply
CONNECT™
gosimplyconnect.com



USA Designed
Made in Taiwan
TAA Compliant

VI. Package Contents



No	Product	Description	QTY
1	THE DONGLER	Plastic-coated steel ring connected to a combination lock	1
2	HDMI CABLE HARNESS	For securely connecting your Dongler to the device HDMI cable	1
3	DONGLE HARNESS	Wire loop type of harness	3
4	ADAPTER HARNESS	Sticky pad type of harness	3
5	HEX TOOL	Wrench to adjust hex screws	1
6	HEX SCREWS	Extra set of hex screws	2

V. Product Image



PATENT PENDING

Test Equipment Depot - 800.517.8431 - 5 Commonwealth Ave, MA 01801

TestEquipmentDepot.com