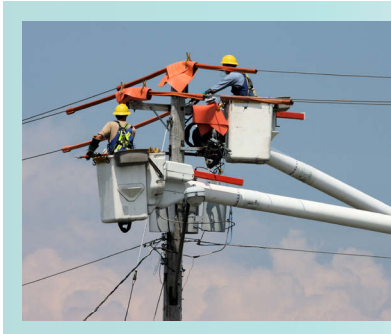


## DV690 Non-contact High Voltage Detector (69 kV)



The DV690 is a rugged and reliable voltage detector that can quickly and safely detect up to 69 kV in high-voltage (HV) electrical systems. This non-contact, industrial-grade tool provides an extra layer of protection for anyone who works around HV electrical systems including utility, storm restoration, telecom, and public safety professionals. Audible and visual alarms notify users of dangerous voltage presence, helping them maintain a safe distance in hazardous locations. Plus, five flexible mounting options make it easy to operate the device to get the job done efficiently.



### Features

- Detect and monitor electrical fields up to 69 kV
- Helps comply with NFPA 70E, OSHA 1910 Subpart S, and OSHA 1926 Subpart K
- Receive clear warning of high voltage from the 106 dB buzzer and bright red LED alarm
- Silence the loud audible buzzer with mute switch when preferred
- The self-test function ensures reliable and safe operation
- Mount the detector five different ways for hands-free or hands-on use: lanyard, clip, handheld, arm strap, or mount onto hot stick (not included)
- Universal adapter allows use with hot sticks to extend reach while remaining at a safe distance (hot stick not included)
- Designed with a textured hand grip for easy operation while wearing gloves
- Built with durable IP54 housing and drop tested to 4 ft (1.2 m) for tough jobs
- Complete with a hard carrying case, break-away lanyard, arm strap, soft pouch, hot stick adapter, and 3x AA batteries

See next page for product specifications and ordering information

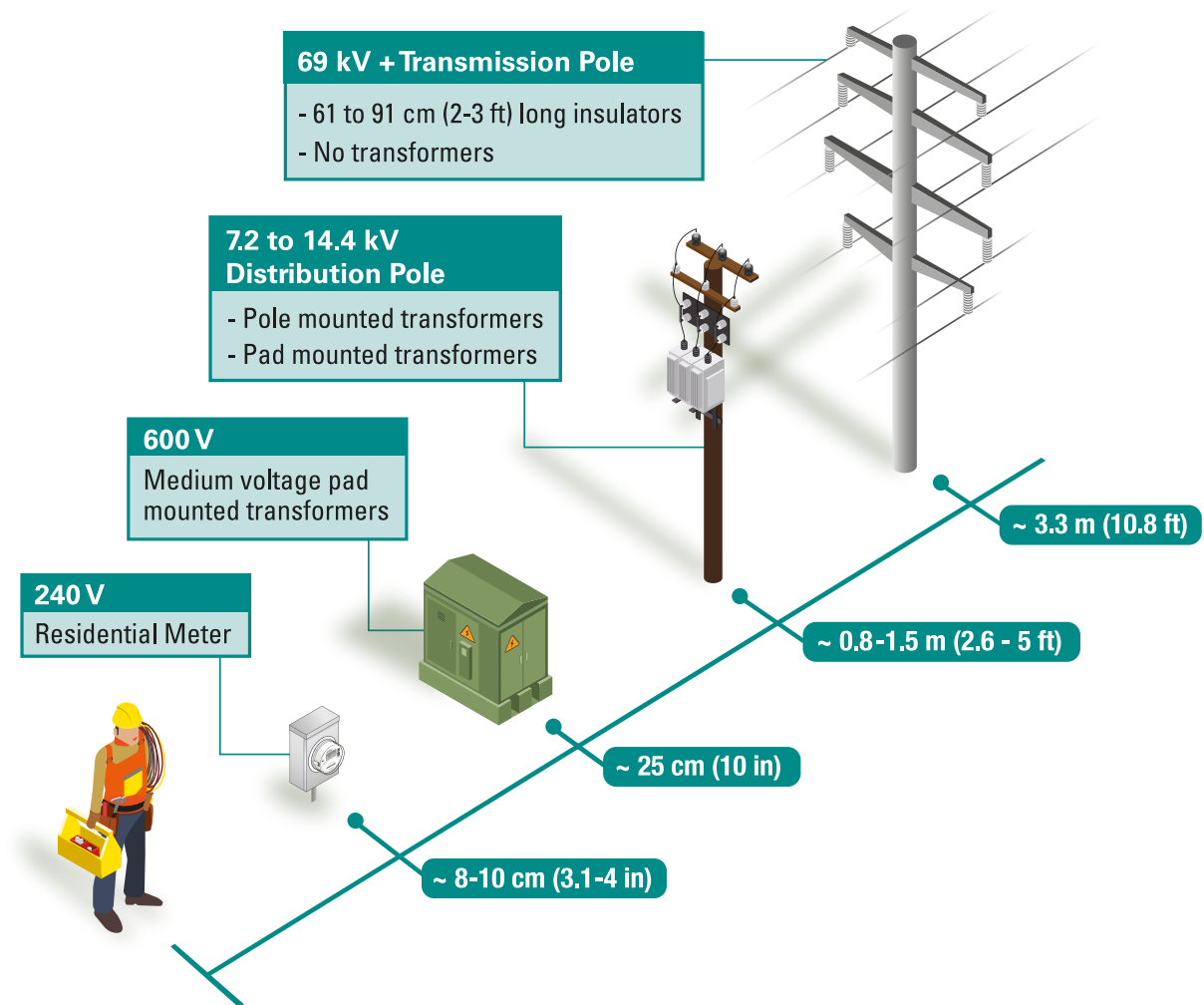


DV690 UPC Code: 793950406915

**Specifications**

AC Voltage Range	100 V AC to 69 kV AC
AC Frequency Range	50/60 Hz
Audible Indication	>106 dB at 0 cm
Visual Indication	507 lux red LED
Power Source	1.5 V (AA) x 3, ~120 hrs continuous use (typical)
EMC	EN 61326-1
IP Rating	IP54
Drop Test	4 ft (1.2 m)
Weight	0.49 lb (220 g)
Dimensions	5.24 x 3.03 x 2.05 in (133 x 77 x 52 mm)

**Distance to Voltage Reference Guide**



For illustration purposes only

**Ordering**

DV690 ..... High Voltage Detector