

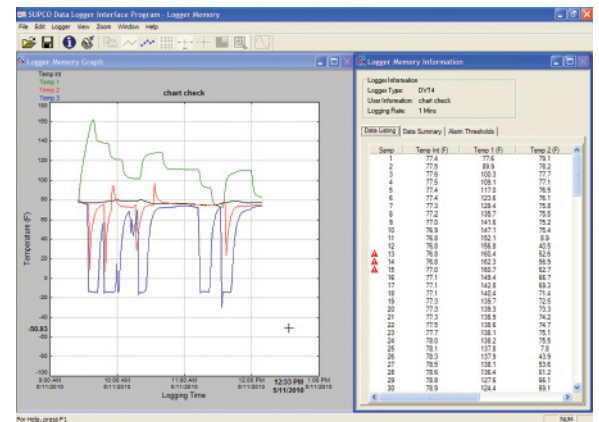
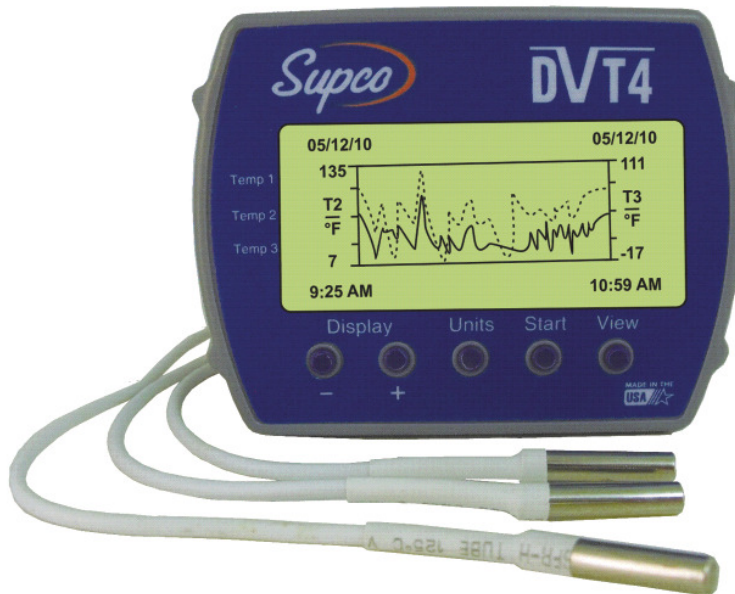


DVT4

Data View Data Logger

Four (4) Channel Temperature Data Logger with Display

INSTANTLY record and view up to 4 temperatures using 1 internal and 3 external sensors. The large, clear display shows all channels simultaneously, as well as the temperature difference between channels. Up to 87,000 data points are available for download to your PC for further analysis.



Test Equipment Depot
1-800-517-8431

99 Washington Street
Melrose, MA 02176
Phone 781-665-1400
Toll Free 1-800-517-8431

Visit us at www.TestEquipmentDepot.com

Features/ Benefits

- Text Display: Real time temperature, logging summary, sample rate, memory used and memory left.
- Graph Display: Shows measurement trends with scrolling feature.
- Visual over and under alarm indicators.
- Internal probe temperature range 15°F to 150°F (-10°C to 65°C).
- External probe temperature range -40°F to 160°F (-40 to 70°C)
- USB connection (cable included).
- Compatible with Windows™ 98SE/ME, 2000, XP, Vista and Windows™ 7. Compatible with 32 and 64 bit systems.





Applications:

- Refrigerators/Freezers
- Commercial Refrigeration Systems
- Wine Storage
- Medical Storage Facilities
- Greenhouses
- Florists
- Museums
- Laboratories

Software Specifications

PC Interface	USB port. USB cable is included
Sampling Interval	User selectable from 1 second to 18 hours, in 1 second increments.
Data Security	Unique factory set logger ID. Recording session counter. Password protected calibration.
Operating System Compatibility	Windows® 98SE, ME, 2000, XP, Vista and 7. Compatible with 32 and 64 bit systems. Not compatible with Windows NT or Windows 95.
Minimum System Requirements	5MB of free disk space, 800 x 600 screen resolution, 1 free USB port.
Recording Start	On button press, immediate after setup, or at a user specified date and time.
Recording Mode	Stop on memory full, or continuous recording with memory rollover
Real Time Status	Visual indication through the status LED. Software real time status.
User Calibration	Password protected calibration for each channel.
User Information	Up to 30 characters
Logger Channels	User selectable. Disabling channels increases the storage capacity of the other channels.
Units	US and Metric
Data Format	Exportable to text or Excel files.

Logger Specifications

Sample Storage Capacity	21,760 points for 4 temperatures, 29,013 points for 3 temperatures, 43,520 points for 2 temperatures, 87,040 points for single temperature.
Sample Rate	User selectable 1 second to 18 hour
Alarms	Visual over and under alarm indicator for all 4 channels
Calibration	User single point offset calibration is available through software for all temperature channels. Calibration can be password protected
Operating Temperature	15°F to 150°F (-10°C to 65°C)
Storage Temperature	-5°F to 160°F (-20°C to 70°C)
Time Accuracy	+/-100ppm@75°F
Internal Probe Temperature Range	15°F to 150°F (-10°C to 65°C)
External Probe Temperature Range	-40°F to 160°F (-40°C to 70°C)
Temperature Accuracy	+/-1°F (0.5°C)
Temperature Resolution	0.1°F or 0.1°C
Dimensions	4" x 3.05" x 1.5" (10.2cm x 7.7cm x 3.8cm)
Weight	7.0 oz (200g)
Power Source	Three AA batteries (included)
Battery Life	1 year continuous use, 2 years average use. The logger automatically turns itself OFF after 1 hour, when not logging. Turn ON by pressing any button