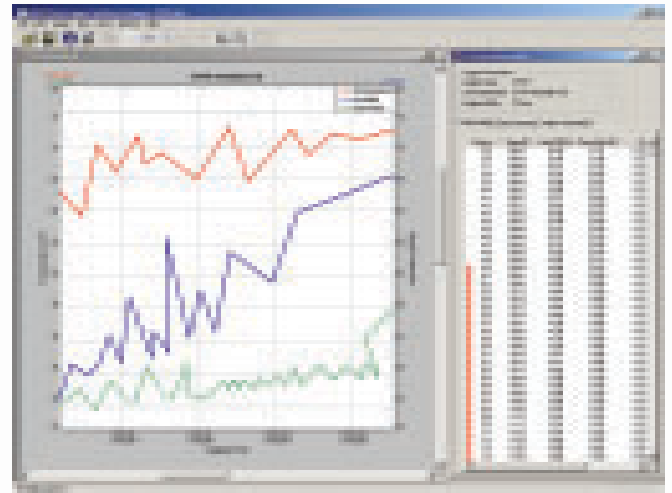




# DVTH

## Data View Data Logger Temperature Humidity Logger with Display

Record and INSTANTLY display trends for temperature, humidity and dew point with the DVTH. Monitor real time measurements for instant environmental conditions. When you're ready, download over 40,000 data points to your PC for further analysis. Data logging has never been this visual!



**Test Equipment Depot**  
1-800-517-8431

99 Washington Street  
Melrose, MA 02176  
Phone 781-665-1400  
Toll Free 1-800-517-8431

### Features/ Benefits

- Text Display: Real time temperature, humidity and dew point. Logging summary, sample rate, memory used and memory left
- Graph Display: Shows measurement trends graphically, with scrolling feature.
- Visual over and under alarm indicators for temperature and humidity
- USB connection (cable included)
- Compatible with Windows™ 98SE, ME, 2000, XP and above
- Calibration through software



Visit us at [www.TestEquipmentDepot.com](http://www.TestEquipmentDepot.com)



## Applications:

- Refrigerators/Freezers
- Commercial Refrigeration Systems
- Wine Storage
- Medical Storage Facilities
- Greenhouses
- Florists
- Museums
- Laboratories

## Software Specifications

<b>PC Interface</b>	USB port. USB cable is included
<b>Sampling Interval</b>	User selectable from 1 second to 18 hours, in 1 second increments.
<b>Data Security</b>	Unique factory set logger ID. Recording session counter. Password protected calibration.
<b>Operating System Compatibility</b>	Windows 98SE, Windows ME, Windows 2000, Windows XP and above. <b>Not compatible with Windows NT or Windows 95.</b>
<b>Minimum System Requirements</b>	5MB of free disk space, 800 x 600 screen resolution, 1 free USB port.
<b>Recording Start</b>	On button press, immediate after setup, or at a user specified date and time.
<b>Recording Mode</b>	Stop on memory full, or continuous recording with memory rollover
<b>Real Time Status</b>	Visual indication through the status LED. Software real time status.
<b>User Calibration</b>	Password protected calibration for each channel.
<b>User Information</b>	Up to 30 characters
<b>Logger Channels</b>	User selectable. Disabling channels increases the storage capacity of the other channels.
<b>Units</b>	US and Metric
<b>Data Format</b>	Exportable to text or Excel files.

## Logger Specifications

<b>Text Display</b>	Displays real time temperature, humidity and dew point. Displays logging summary, sample rate, memory used and memory left.
<b>Graph Display</b>	Shows measurement trends graphically. Graph can be scrolled through the entire logged data.
<b>Sample Point Capacity</b>	43,344 points for temperature only. 21,672 points for temperature, humidity and dew point.
<b>Alarms</b>	Visual over and under alarm indicator for temperature and humidity. Dew point alarms are not available
<b>Calibration</b>	User single point offset calibration is available through software for both temperature and humidity. Calibration is password protected.
<b>Operating Temperature</b>	15°F to 150°F (-10°C to 65°C)
<b>Storage Temperature</b>	-5°F to 160°F (-20°C to 70°C)
<b>Time Accuracy</b>	+/-100ppm @75°F
<b>Relative Humidity Range</b>	0% to 99%RH, non condensing.
<b>Relative Humidity Accuracy</b>	+/- 2%RH, from 10% to 90% RH
<b>Relative Humidity Resolution</b>	0.01%RH
<b>Temperature Accuracy</b>	+/-1°F (0.5°C)
<b>Temperature Resolution</b>	0.01°F or 0.01°C
<b>Dimensions</b>	4" x 3.05" x 1.5" (10.2cm x 7.7cm x 3.8cm)
<b>Weight</b>	7.0 oz (200g)
<b>Power Source</b>	3 AA Alkaline or Lithium batteries
<b>Battery Life (average use)</b>	2 Years