



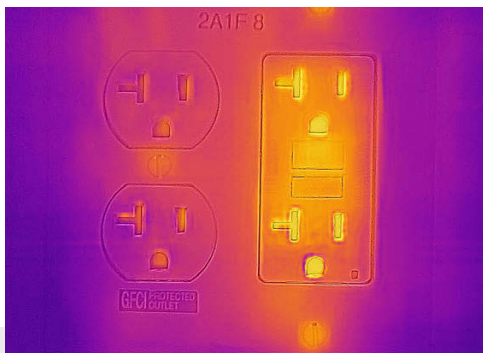
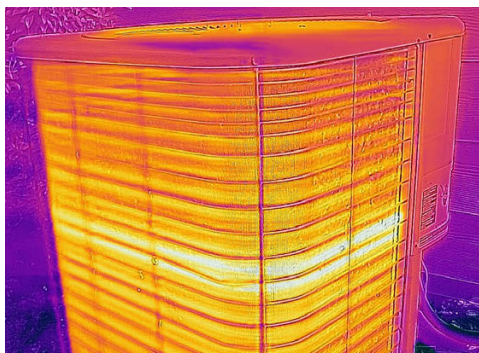
Test Equipment Depot - 800.517.8431 - 99 Washington Street Melrose, MA 02176 - TestEquipmentDepot.com



PRO-GRADE THERMAL CAMERAS FOR SMARTPHONES

FLIR ONE® Pro-Series

The FLIR ONE Pro and FLIR ONE Pro LT give you the power to find invisible problems faster than ever. With robust features such as multiple temperature meters and level/span controls, FLIR ONE Pro cameras work as hard as you do. The revolutionary VividIR™ image processing helps you see more details, FLIR MSX® adds sharpness and perspective, and the FLIR OneFit™ adjustable connector extends up to 4 mm to fit many popular protective cases. Whether you're inspecting electrical panels, looking for HVAC problems, or finding water damage, the FLIR ONE Pro and FLIR ONE Pro LT are tools no serious professional should be without.



VividIR™ IMAGE PROCESSING

Detect problems with precision thanks to the FLIR ONE Pro-Series' enhanced processing power

- Unique image processing technique generates images with up to 4x as many pixels for improved temperature measurement accuracy
- Enhances native IR resolution to output crisply detailed thermal images that are easy to interpret
- When combined with MSX®—which enhances thermal images with visual details—the FLIR ONE Pro-Series offers unsurpassed image quality for a mobile IR solution

PRO AND PRO LT MODELS

Get great results from the Pro LT or upgrade to the FLIR ONE Pro for higher resolution and improved sensitivity

- Choose the FLIR ONE Pro to record crisp 19,200 pixel IR images at a thermal sensitivity of 70 mK
- Record images with better clarity and temperature measurement accuracy by putting more pixels on the target
- Measure temperatures up to 400°C (752°F) with the FLIR ONE Pro, compared to a temperature maximum of 120°C (248°F) with the Pro LT

HARD-WORKING APP

Advanced, work-based features mean more professional problem solving and functionality

- Set multiple temperature spot meters and regions of interest for concurrent measurements
- See around corners or into awkward spaces by connecting to an Apple Watch or Android smartwatch
- Access real-time thermal tips through the FLIR ONE app and prepare professional reports through FLIR Tools® mobile app

SPECIFICATIONS

Specifications by product	FLIR ONE Pro LT	FLIR ONE Pro
Thermal pixel size	17 μm	12 μm
Thermal resolution	4,800 pixels (80 \times 60)	19,200 pixels (160 \times 120)
Thermal sensitivity	100 mK	70 mK
Object temperature range	-20°C to 120°C (-4°F to 248°F)	-20°C to 400°C (-4°F to 752°F)
Common features		
Certifications	MFi (iOS version), RoHS, CE/FCC, CEC-BC, EN62133	
Operating temperature	0°C to 35°C (32°F to 95°F), battery charging 0°C to 30°C (32°F to 86°F)	
Non-operating temperature	-20°C to 60°C (-4°F to 140°F)	
Size (w \times h \times d)	68 \times 34 \times 14 mm (2.7 \times 1.3 \times 0.6 in)	
Weight (incl. battery)	36.5 g	
Mechanical shock	Drop from 1.8 m (5.9 ft)	
Optical data		
Spectral range	8 – 14 μm	
Visual resolution	1440 \times 1080	
HFOV / VFOV	50° \pm 1° / 43° \pm 1°	
Frame rate	8.7 Hz	
Focus	Fixed 15 cm – infinity	
Measurement		
Accuracy	\pm 3°C (5.4°F) or \pm 5%, typical percent of the difference between ambient and scene temperature. Applicable 60 sec after start-up when the unit is within 15°C to 35°C (59°F to 95°F) and the scene is within 5°C to 120°C (41°F to 248°F)	
Emissivity correction	Matte, Semi-Matte, Semi-Glossy, Glossy	
Measurement correction	Emissivity; Reflected apparent temperature (22°C / 72°F)	
Shutter	Automatic/Manual	

Power	
Battery life	Approximately 1 hr
Battery charge time	40 min
Interfaces	
Video	Male Lightning (iOS), Male USB-C (Android), Micro-USB (Android)
Charging	Female USB-C (5V/1A)
App	
Image presentation modes	Infrared, visual, MSX, gallery
VividIR	Yes
Palettes	Gray (white hot), Hottest, Coldest, Iron, Rainbow, Rainbow HC, Arctic, Lava, and Wheel
Capture modes	Video, photo, time-lapse
Video and still image display/capture	Saved as 1440 \times 1080
File formats	Radiometric JPG, MPEG-4 (file format MOV (iOS), MP4 (Android))
Spot meter	On/off; Resolution 0.1°C (0.1°F)
Adjustable MSX distance	0.3 m – infinity
Visual battery indicator	0-100%



Equipment described herein is subject to US export regulations and may require a license prior to export. Diversion contrary to US law is prohibited. Imagery for illustration purposes only. Specifications are subject to change without notice. ©2018 FLIR Systems, Inc. All rights reserved. 06/18

18-1165-INS



The World's Sixth Sense®