

## Technical Data

# Fluke iSee™ the Fluke iSee™ Mobile Thermal Camera – TC01A/TC01B



## KEY FEATURES

- 256 x 192 pixels, detailed image quality
- Up to 500 °C/932 °F, suitable to use in many applications
- $\pm 2\%$  or  $\pm 2\text{ °C}/3.6\text{ °F}$  accuracy, reliable and stable
- 25 Hz frame rate for smooth video recording

With the Fluke iSee™ Mobile Thermal Camera, temperature can be measured and thermal imaging detection can be carried out anytime and anywhere by conveniently inserting it into the Type C or Lightning interface of a smartphone. It can be widely used in electrical and mechanical inspections, inspection service, HVAC inspection, product R&D and quality control, greatly improving the inspection efficiency.

## Detailed Image Quality Comparable to Professional Thermal Cameras

- 256 x 192 pixels, detailed image quality
- Up to 500 °C/932 °F, suitable to use in many applications
- 50 mk (0.05 °C or 0.09 °F) thermal sensitivity for fine differences
- $\pm 2\%$  or  $\pm 2\text{ °C}/3.6\text{ °F}$  accuracy to ensure reliable results
- 25 Hz frame rate for smooth video recording
- Customize image view with more than 10 standard or custom color palettes

## Powerful Full Temperature Range Analysis

- Powerful full temperature range analysis
- Never miss any detail with real-time high and low temperature capture
- Adjustable emissivity to apply with different materials
- Comprehensive temperature analysis for spot, line and area, supported with professional thermal imaging app
- Real-time temperature alarm for timely response of abnormal condition
- Automatic time-lapse capture mode, for unattended operation
- Infrared and visible image comparison for locating, comparing and archiving

## Real-Time Image Sharing for Fast and Easy Communication

- Easy image and video management through real-time communication
- Easy to add image annotation for smooth communication
- Automatically generate infrared inspection reports, easy for reporting, archiving and sharing (TC01B only)

## Small and Portable, Takes Only a Second to Get Started

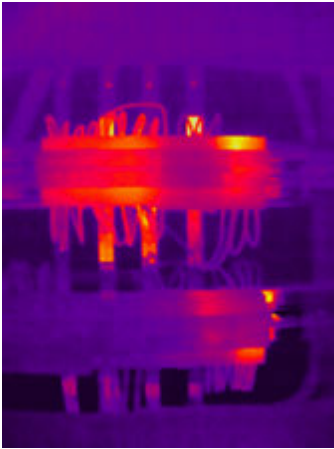
- Compact design as light as 22 g
- The iSee™ is made of high quality specially treated aluminum material with laser etched surface
- Durable. Up to 1 meter drop test, IP54 ingress protection
- Optimized Fluke iSee™ application interfaces and menus, to enhance user experience with easy to access functions

## Suitable for Various Models, More Reliable

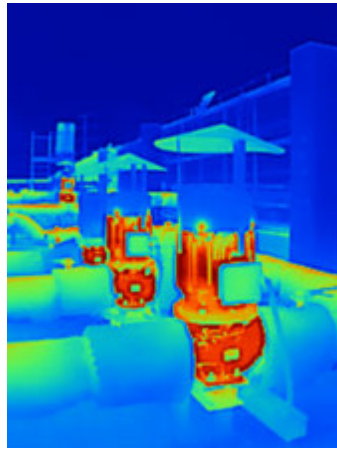
- The TC01B is equipped with the Lightning interface, compatible with iPhone and iPad\*. It fully supports iOS with the Apple MFI Certification obtained.
- The TC01A with the Type C interface is for Android\* and HarmonyOS

\*Android™ is a registered trademark of Google, Inc. iPhone and iPad are trademarks registered by Apple Inc. in the United States and other countries and regions.

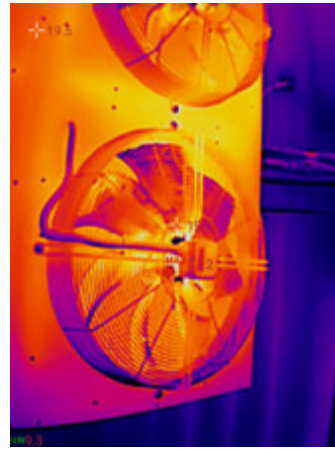
Fluke iSee™ application scenarios



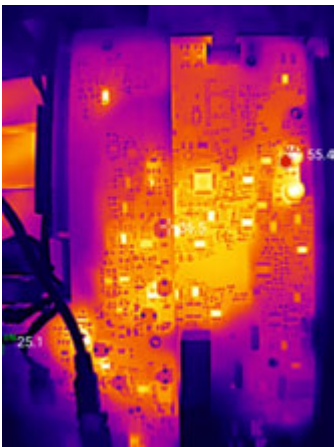
Electrical cabinet



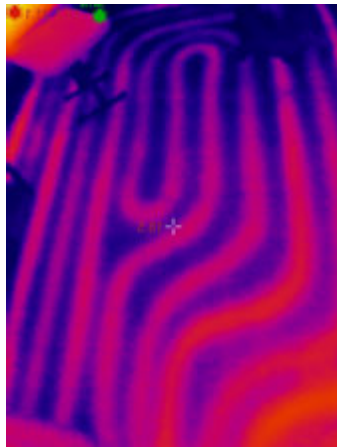
Motor



Fan



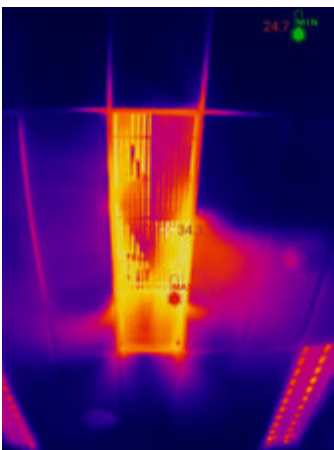
Circuit boards



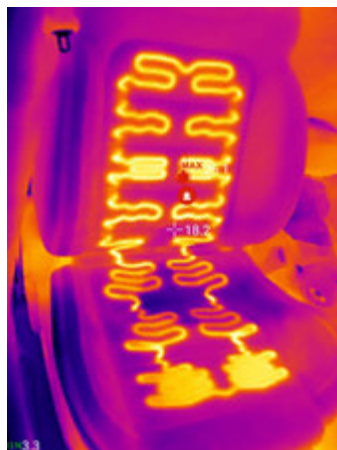
Floor heating



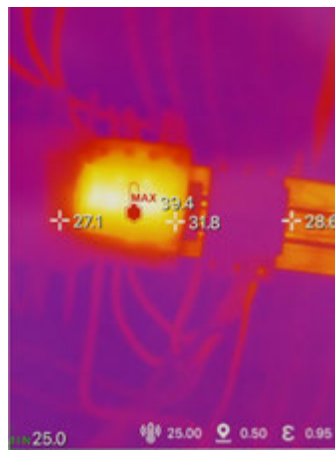
Outdoor environment



Air conditioner vent



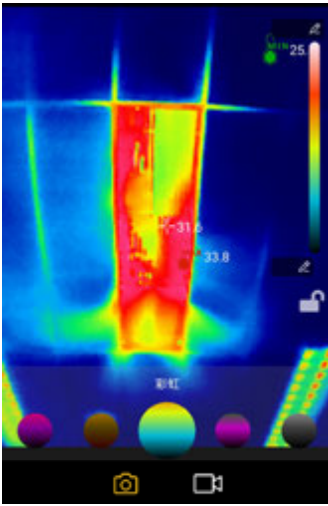
Heated car seats



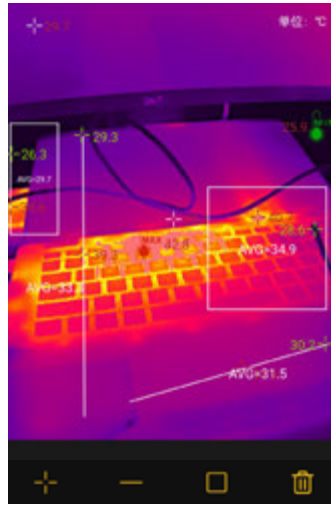
Electric switches

**iS** Fluke iSee™ APP icon

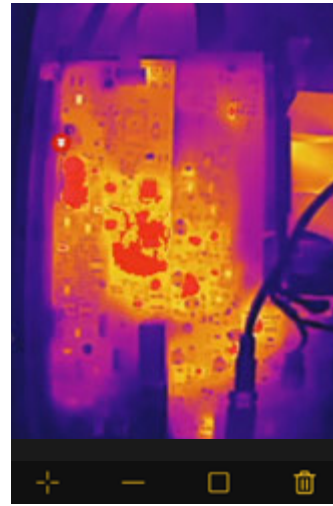
**Integrated key functions of a professional thermal camera: shooting, measurement, analysis and sharing.**



Palette choices

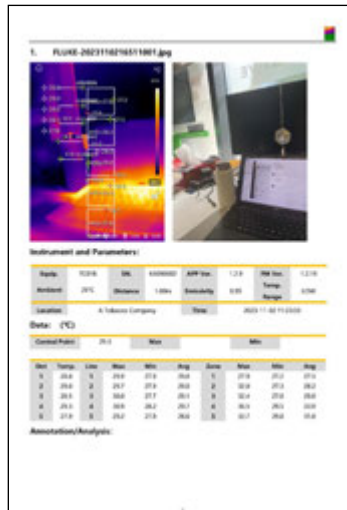


Temperature analysis for spot, line, and area



Over-temperature area alarm

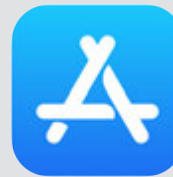
**Up to 9 images can be selected to generate a professional report with one touch (tc01b only).**



**To Download the Fluke iSee™ Mobile Thermal Camera app**



For Android devices, please scan the QR code above to download the Fluke iSee™ mobile thermal camera app



For Apple devices, go to "APP Store" and search for "Fluke iSee" to download the Fluke iSee™ mobile thermal camera app

- \* The TC01A supports Android™ 6.0 / HarmonyOS 2.0 or later and requires smartphones with OTG function enabled; the TC01B supports iOS 11.0 or later.
- \* The functions of the Android and iOS app versions differ slightly, but the core application remains the same. Please refer to each app for guidance.

## Specifications

	TC01A	TC01B
<b>Performance Specifications</b>		
IR resolution	256 x 192	
Pixel size	12 $\mu$ m	
Temperature range	-10 °C to 550 °C/14 °F to 1022 °F	-20 °C to 550 °C/-4 °F to 1022 °F
Temperature accuracy	$\pm$ 2 % of rdg or $\pm$ 2 °C/3.6 °F, whichever is greater (@ 23 °C $\pm$ 5 °C/73.4 °F $\pm$ 9 °F ambient temperature)	
Temperature measurement distance	0.25 m to 5 m (* -20 °C/-4 °F to 10 °C/50 °F, only for 0.25 m to 3 m)	
Frame rate	25 Hz	
Warm-up time	1 minute	
Focal length	Fixed focal length: 3.2 mm	
Shutter mode	Internal	
Thermal sensitivity (NETD)	50 mK	
Spectral range	8 to 14 $\mu$ m	
Field of view (H x V)	56° x 42°	
Spatial resolution	3.81 mrad	
<b>General Specifications</b>		
USB interface	Type-C	Lightning
Operating temperature	0 °C to 40 °C/32 °F to 104 °F	
Storage temperature	-30 °C to 60 °C/-22 °F to 140 °F	
Operating humidity	10 % to 90 % RH, non-condensing	
Power consumption	350 mW (Typical)	200 mW (Typical)
Drop test	1 m/3.3 ft	
Ingress protection	IEC 60529: IP54 (with the protective cover for Type C)	IEC 60529: IP56
Operating altitude	2 000 m/6 562 ft	
Storage altitude	12 000 m/39 370 ft	
Dimensions (L x W x H)	60 x 33.5 x 11.2 mm/2.36 x 1.32 x 0.44 in	
Weight	22 g/0.78 oz	
<b>EMC Environment</b>		
International	IEC 61326-1: Electromagnetic environment for portable equipments CISPR 11: Group 1, Class A	
<p>Group 1: Equipment has intentionally generated and/or uses conductively-coupled radio frequency energy that is necessary for the internal function of the equipment itself.</p> <p>Class A: Equipment is suitable for use in all establishments other than domestic and those directly connected to a low-voltage power supply network that supplies buildings used for domestic purposes. There may be potential difficulties in ensuring electromagnetic compatibility in other environments due to conducted and radiated disturbances.</p> <p>Caution: This equipment is not intended for use in residential environments and may not provide adequate protection to radio reception in such environments.</p>		
Korea (KCC)	Class A Equipment (Industrial Broadcasting and Communication Equipment)	
<p>Class A: Equipment meets requirements for industrial electromagnetic wave equipment and the seller or user should take notice of it. This equipment is intended for use in business environments and not to be used in homes.</p>		
United States (FCC)	47 CFR 15 Subpart B. This product is considered an exempt device per clause 15.103.	
Warranty	2 years	

## Ordering Information

FLUKE TC01A/TC01B Mobile Thermal Camera

## Standard Accessories

- The Fluke TC01A/TC01B Thermal Camera
- Packaging box
- User manual

**Fluke.** Keeping your world up and running.™

©2024 Fluke Corporation. Specifications subject to changes without notice. 240378-en

Modification of this document is not permitted without written permission from Fluke Corporation.