

Fuse Tool

FUSE TOOL

The FT-1 Fuse Tool is designed to assist in the installation and removal of most cutout type overhead fuse links. The Fuse Tool provides greater control of the fuse link during installation and removal. The receiver on the Fuse Tool is slotted down one side to allow for clearance of the fuse link ring.

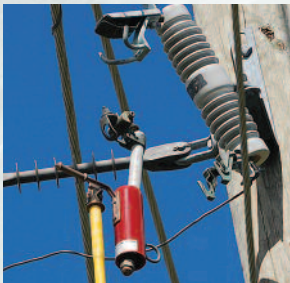
When installing a fuse link, the slotted receiver on the Fuse Tool improves installation onto the cutout trunnion by maintaining the orientation of the fuse link, making it much quicker to install. Because of the open cylinder the user is able to line up the Fuse Tool with the fuse link for easy installation and removal.

When removing a fuse link, the Fuse Tool minimizes the risk of dropping the fuse link by capturing the link in the receiver. The Fuse Tool receiver holds the fuse link in place while it is dislodged and removed from the cutout trunnion. The switch hook on the Fuse Tool can be used to close in the fuse link.

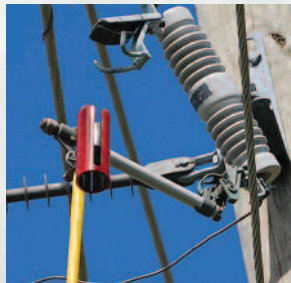
By using the Fuse Tool, line crews are able to quickly and safely remove and install most cutout type overhead fuse links found in overhead distribution systems.

FEATURES & BENEFITS

- Heavy duty fuse receiver
- Corrosion resistant switch hook
- Universal spline for standard hotstick attachment
- Quickly and easily remove and install fuse links
- Increased safety during fuse link replacement
- Eliminate the danger of falling fuses



FT-1 being used to
remove a blown fuse



FT-1 being used to close in
a new fuse

ORDERING INFORMATION

FT-1	Fuse Tool with Instruction Sheet
HSA-2500	Universal Hotstick Adapter (Shotgun)
S-4H	4' Fixed Length Fiberglass Hotstick *
S-6H	6' Fixed Length Fiberglass Hotstick *

* Telescopic Hotsticks are available, contact the factory for details
U.S. Des. Pat. No. D605,912

All sales are subject to the terms and conditions of the Limitation of Warranty and Liability found at www.HDElectricCompany.com.

Users must read and agree to the Limitation terms, as stated, before using the product. HD Electric Company is committed to ongoing review and improvement of its product lines, and thus reserves the right to modify product design and specifications without notice. HD Electric Company products are available through HD sales representatives worldwide.

Printed in U.S.A. © HD Electric Company 2011 • Bulletin No. FT1-200a

**Test Equipment
Depot**
1-800-517-8431

99 Washington Street
Melrose, MA 02176
Phone 781-665-1400
Toll Free 1-800-517-8431

Visit us at www.TestEquipmentDepot.com