

 **Test Equipment Depot**

99 Washington St. Melrose MA, 02176

1.800.517.8431 | 781.665.0780 (Fax)

## Instructions

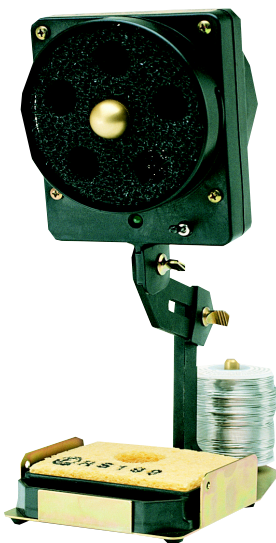
for

**EDSYN** INC

## FXF12

FUMINATOR™

# Fume Extractor Fan



***Power Supply***

***Standard (U.S.A.)***

***-1 (No Transformer)***

***-100 (Japan)***

***-230 (Europe)***

***-230B (U.K.)***

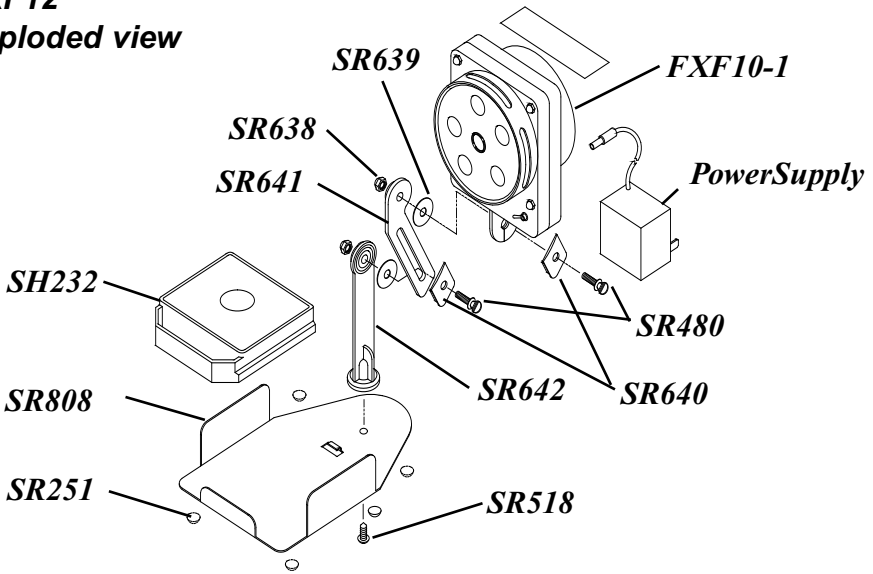
***Solder not included***

*(Design, colors and materials subject to change without notice)*

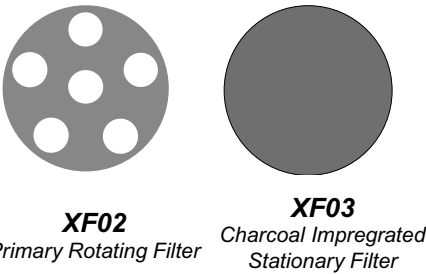
Form.1044

Rev C

**FXF12**  
**exploded view**



**XF01**  
**Filter Set**



- XF01** Filter Set with 1 - XF02 and 1 - XF03
- XF02** Primary Rotating Filter (set of 5)
- XF03** Charcoal Impregnated Stationary Filter (set of 5)

**XF02**  
**Primary Rotating Filter**

The XF02 filter element rotates at the same speed as the fan blades. Fumes and nail residues are evenly distributed.

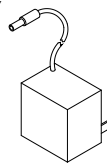
(set of 5)

**XF03**  
**Charcoal Impregnated Stationary Filter**

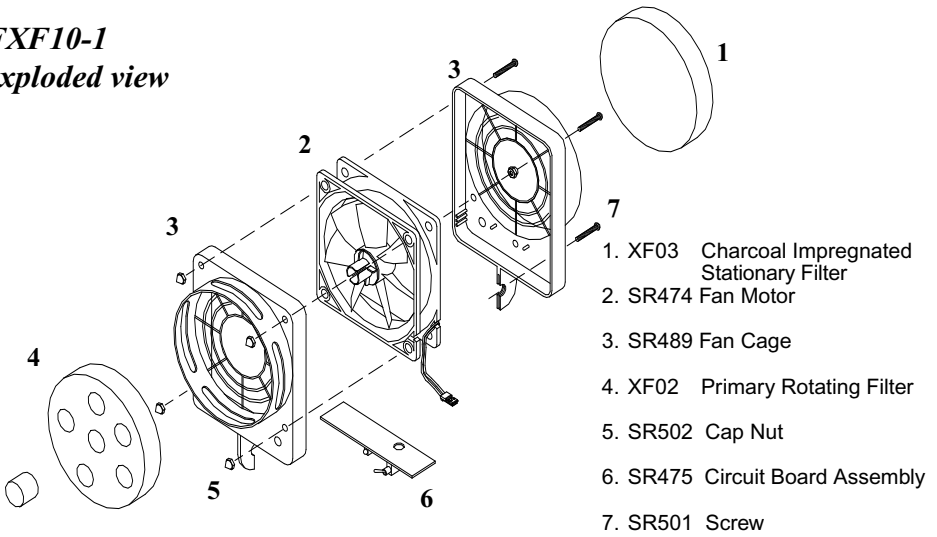
(set of 5)

**power supply**

- SR571** for 100V (Japan)
- SR538** for 115V (U.S.A.)
- SR572** for 230V (Europe)
- SR821** for 230B (U.K.)



**FXF10-1**  
*exploded view*



**Filter Replacement**

1. Pull out dirty filter from hub when fan is off.
2. Replace with new XF02 Primary Rotating Filter

**Green LED**  
(indicates air flow towards fan)

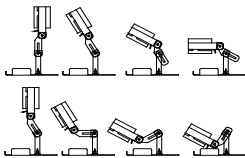
**Front View**  
(air input)

**Yellow LED**  
(indicates air flow away from fan)

**Rear View**  
(air output)

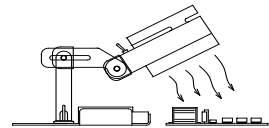
Universal 12VDC Input Jack Type: J4 Female 2.1 mm x 5.5 mm. Recommended 12VDC, 500mA Power Supply

**Variable Positioning**



when extracting residue from the air.

**For Removing Fumes**



Position the FXF12 close to the working area to extract residue from the air.

The XF02 and XF03 filter elements can be used separately. For maximum filtration, install both filters.

## features

- Powerful 12V fan motor removes unwanted fumes, powder residues and odors from the air
- Can be used to either filter or blow dry clients nails
- Ultra-quiet operation
- Rotating front filter provides filtration eight times better than a stationary filter
- Bright front (green) and rear (yellow) LED's to indicate power and air flow direction
- Adjustable to almost any working angle
- Quick filter replacement
- Internal safety grills

## specifications

Power  
Requirements 12VDC

Overall  
Dimension 5.5"W x 12"H x 5.5"D  
140 mm x 305 mm x 140 mm

Weight 1.09 lbs (.49 kg)

Design, color and material subject to change  
without notice



 **Test Equipment Depot**

99 Washington St. Melrose MA, 02176

1.800.517.8431 | 781.665.0780 (Fax)

made in U.S.A.

Visit us at [www.TestEquipmentDepot.com](http://www.TestEquipmentDepot.com)