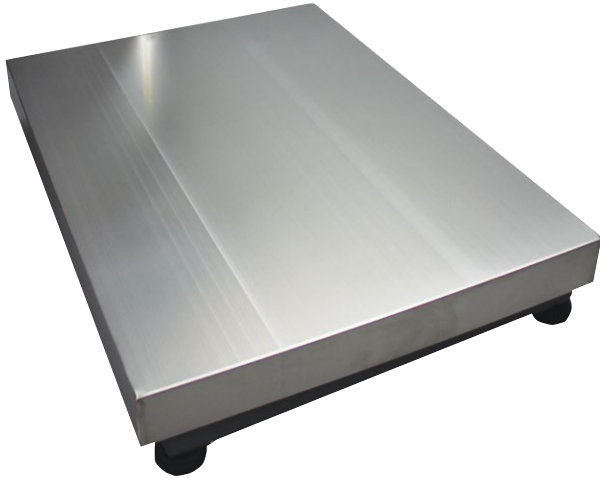




99 Washington Street
Melrose, MA 02176
Phone 781-665-1400
Toll Free 1-800-517-8431

Visit us at www.TestEquipmentDepot.com



Featuring a removable stainless steel pan, GB and GF platform scales offers a durable solution for industrial applications such as weighing, parts counting, percentage weighing and comparative weighing. The GB and GF works well as an auxiliary platform in tandem with Adam's CBD bench counting scale. The GB and GF performs with a number of indicators and is available in a range of capacities and platform sizes. The GB and GF is well-suited for shipping and receiving, batching items for processing, and stock and warehouse auditing. Features include single-point precision load cell technology and overload protection.

A bench top weighing solution that works with an array of indicators

Features

- Stainless steel platform for added durability
- Single point load cell and cast-aluminum base is solid for industrial applications
- Easily connect to Adam's CBD counting scale for dual counting operations
- Rugged construction stands up to industrial use
- Can be used with any Adam indicators
- Overload protection helps prevent damage to internal components

Applications

- Weighing

About ADAM:

For more than 40 years, professionals worldwide have relied on Adam Equipment for an extensive selection of dependable and affordable weighing equipment. Adam provides the right balance of speed, performance and value.

Model	GB 35a	GB 70a	GB 130a	GB 260a
Capacity	35lb / 16kg	70lb / 32kg	130lb / 60kg	260lb / 120kg
Readability	0.001lb / 0.5g	0.002lb / 1g	0.005lb / 2g	0.01lb / 5g
Excitation Voltage	5 - 10 VAC / DC			
Loadcells	1			
Pan Size	11.8"x15.7" / 300x400mm			
Operating Temperature	-10° to 40°C / 14° to 104°F			
Housing	Die-cast aluminum			
Cable Length	3' / 1M			
Overall Dim.	11.8"x20.5"x2.6" / 300x520x65mm (wxdxh)			
Net Weight	16.8lb / 7.6kg			

Model	GF 165a	GF 330a	GF 660a	GF 1320a
Capacity	165lb / 75kg	330lb / 150kg	660lb / 300kg	1320lb / 600kg
Readability	0.01lb / 5g	0.02lb / 0.01kg	0.05lb / 0.02kg	0.1lb / 0.05kg
Excitation Voltage	5 - 10 VAC / DC			
Loadcells	1			
Pan Size	15.7"x19.7" / 400x500mm		23.6"x31.5" / 600x800mm	
Operating Temperature	-10° to 40°C / 14° to 104°F			
Housing	Die-cast aluminum			
Cable Length	3' / 1M			
Overall Dim.	15.7"x19.7"x2.6" / 400x500x65mm (wxdxh)			23.6"x31.5"x2.8" / 600x800x70mm (wxdxh)
Net Weight	22lb / 10kg			50.7lb / 23kg



99 Washington Street
 Melrose, MA 02176
 Phone 781-665-1400
 Toll Free 1-800-517-8431

