

STANDBY POWER METER with DATA LOGGER

Wattman HPM-100A

A surprisingly large number of electrical products such as PC's, TVs, Microwave ovens, Washers & Driers, Air conditioners, etc. cannot be switched off completely without being unplugged. These products draw power for 24 hours a day which power consumption we call "standby power."

There are some meters in the market to measure this standby power. Unfortunately, cost for some meters is too high or their accuracy is poor for low-cost ones. Wattman HPM-100A is the best Standby Power Meter satisfying both price and accuracy featuring wide measurement input range, Data Logger, GUI Program, etc.



Features

- Data Logger function
- GUI Program Gratuitous Supports
- Measurement of standby and consumption power (0.009W~3,600W)
- Simultaneous display of 4 values for Voltage, Current, Watt & Frequency
- Wide measurement range : AC, V, A, W, PF, Hz, Wh, VA, Var, CO₂ , Ocos θ , Electric charge, expelled volume
- Easy to use with multi-consent (Plug & Play)
- Electric charge calculation and expelled volume of CO₂ computation available
- Battery or Adaptor no needed for measurement
- Timely Set (1 hour ~ 24 hours)
- Complied with IEC 62301 Safety Standard
- Complied with EN 61010-1 Safety Standard
- RS232 to USB cable provided

Technical Specification

Voltage Measure Range		
Voltage	AC 90V ~ 240V	±(0.3% reading+3 digits)
Current Measure Range		
Current	AC 100uA ~ 5mA	±(0.5% reading+3 digits)
	AC 5mA ~ 10A	±(0.3% reading+3 digits)
	AC 10A ~ 15A	±(0.4% reading+3 digits)
Wattage Measure Range		
Active Power (PF 1.0)	0.009W ~ 0.45W	±(0.5% reading+3 digits)
	0.45W ~ 2,600W	±(0.4% reading+3 digits)
	2,600W ~ 3,600W	±(0.5% reading+3 digits)
Reactive Power	0.009Var ~ 3,600Var	±(0.5% reading+3 digits)
Apparent Power	0.009VA ~ 3,600VA	±(0.5% reading+3 digits)
Power Factor		
Power Factor	± 0.001 ~ 1.000	± (0.5% reading+3 digits)
Wattage Measure Range		
Wattage	0.000mWh ~ 9,990kWh	± (1.0% reading+3 digits)
Frequency		
Frequency	50Hz ~ 1000Hz	± (0.3% reading+3 digits)
Dimension & Weight		
Dimension	115 (W) x 200 (H) x 45 (D) mm	
Weight	260 g	

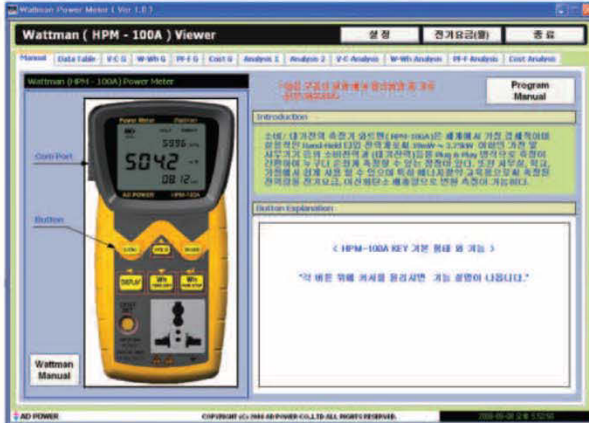
Applications

- Public institution & consumption union
- Energy saving educational program
- Home appliance stores
- Electronic product line & service centers

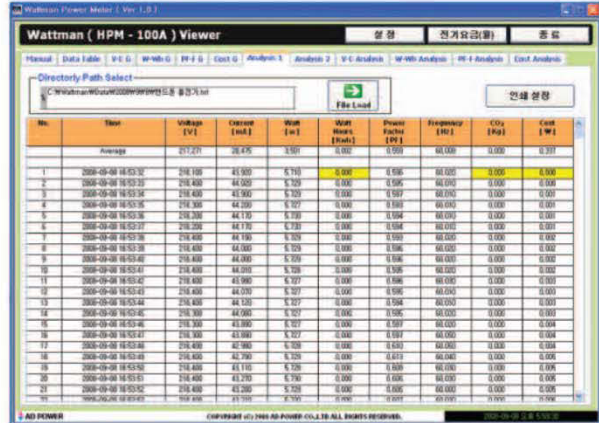
와트맨의 각부 명칭



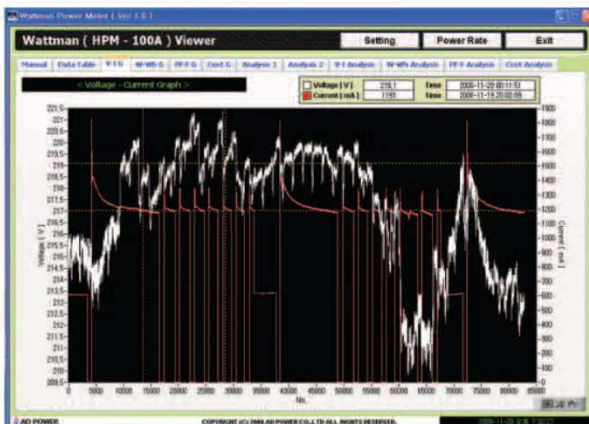
GUI Program gratuitous supports



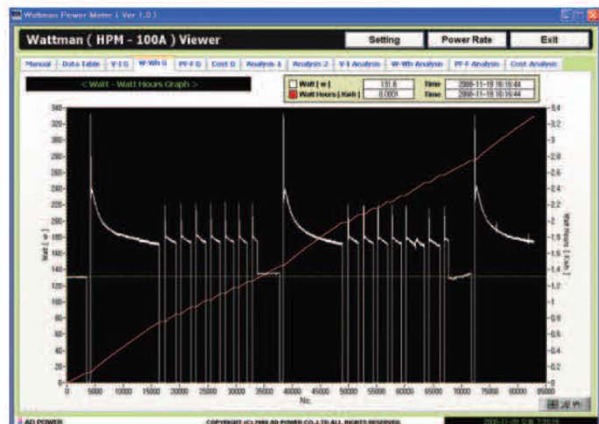
▲ Manual Window



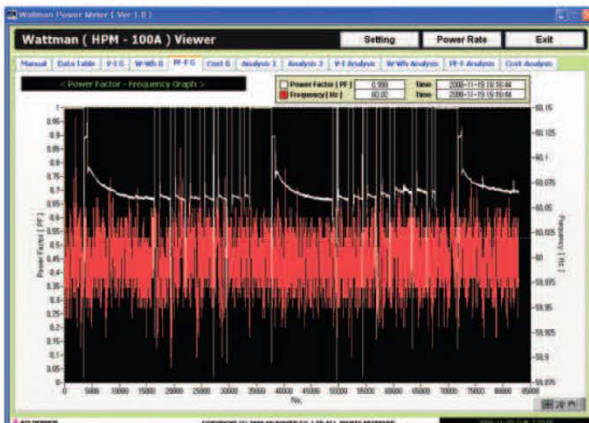
▲ Analyzer TAP



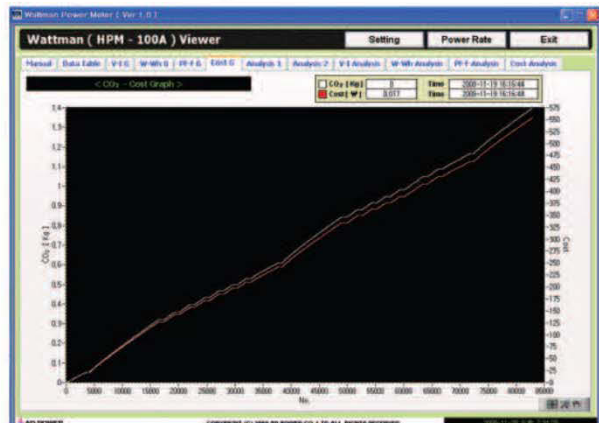
▲ Voltage & Current Graph TAP



▲ Watt & Wh Graph TAP

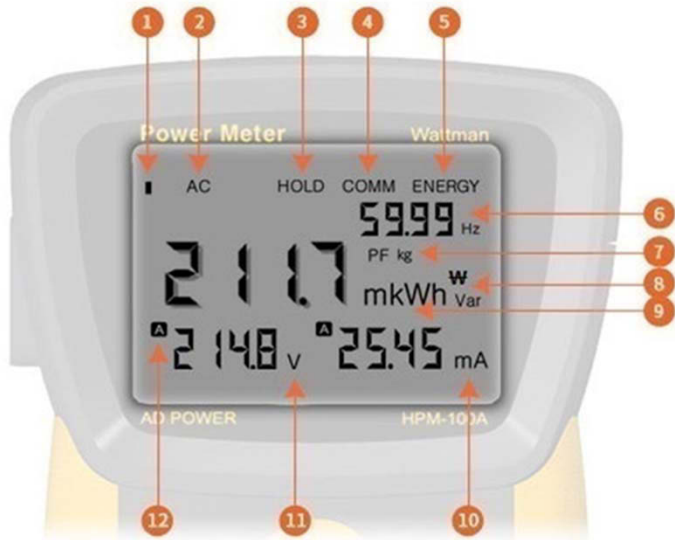


▲ PF & Frequency Graph TAP



▲ CO2 & COST Graph TAP

Configuration and Names



- ① Data Logging display
- ② AC Input power
- ③ Data HOLD
- ④ PC Communication display
- ⑤ Wattage display
- ⑥ Frequency display
- ⑦ Power factor, CO₂ output & electric charge display unit
- ⑧ Currency display (\$ ¥ €)
- ⑨ Measured Active Power & Watt-hour display unit
- ⑩ Current : current usage display for the other measuring device
- ⑪ Voltage : voltage usage display for the other measuring device
- ⑫ Autoranging indication



HPM-100A Components & Accessory

HPM-100A Basic components



HPM-100A



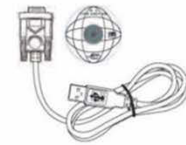
GUI PROGRAM - CD



Standard load



Bag



RS232 TO USB CABLE