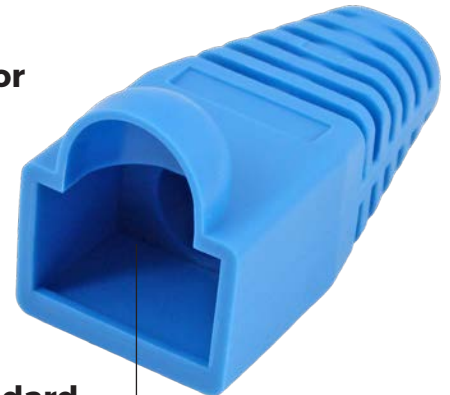


# CAT6/6A STRAIN RELIEF BOOTS & COMBO PACK



**NEW  
SIZE**



# CAT6/6A STRAIN RELIEF BOOTS & COMBO PACK

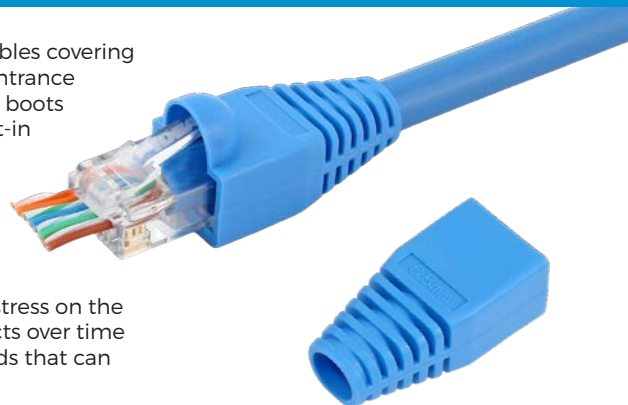
IDEAL Modular Plug Strain Relief Boots are now available for larger diameter twisted pair cables covering CAT6 and many CAT6A cables. These new boots have a 6.5mm (.256") diameter rear cable entrance and are suitable for cables ranging from 6.0mm to 7.0mm (.236" to .275") in diameter. These boots are compatible with all standard RJ45 modular plugs that do not already incorporate a built-in external strain relief. The 85-383 SKU contains 25 blue boots in a package.

Made of flexible PVC, these boots provide several benefits when terminating modular plugs in the field:

- Boot hood protects the modular plug retaining tab from snags and breaking, prolonging the life of the connector
- Tapered end secures and centers the cable to dampen cable vibrations which can place stress on the modular plug pin-to-conductor contact points, resulting in intermittent or open contacts over time
- Extended back creates a gradual radius for cable bends, eliminating kinks and sharp bends that can impact data speeds and cable headroom
- Adds a professional appearance to field terminated cables
- Compatible with standard sized RJ45 (8-position, 8-contact) modular plugs

Also available is a new combo pack of boots and plugs. Part Number 85-382 includes 10 pieces of the 6.5mm blue boots, plus 10 pieces of our best-selling CAT6 RJ45 Feed-Thru Modular Plugs.

For CAT5e and smaller diameter cables, use the 85-380 SKU which has a 5.5mm (.216") rear cable entrance hole and is suitable for cables ranging from 5.0mm to 6.0mm (.197" to .236") in diameter. A combo pack of 15 blue boots plus 15 CAT5e RJ45 Standard Modular Plugs is also available.



## Ordering Information

Description	Pack Qty.	Part No.	UPC
RJ45 Snagless Strain Boots, Blue, 6.5mm	Card of 25	<b>85-383</b>	783250933174
CAT6 Feed-Thru Modular Plugs and Strain Relief Boots (Combo Pack)	Card of 10 each	<b>85-382</b>	783250883509
RJ45 Snagless Strain Relief Boots, Blue, 5.5mm	Card of 25	<b>85-380</b>	783250853809
CAT5e RJ45 and Strain Relief Boots (Combo Pack)	Card of 15 each	<b>85-379</b>	783250853793

## Boot & Plug Compatibility Chart

Note: Actual cable jacket diameter is more important than cable category rating for selecting the appropriate strain boot. Use the below chart as a starting point.

Part No.	Category	6.5mm Boot (85-383)	5.5mm Boot (85-380)	Boot Not Compatible
85-368/85-369/85-363	6A/6			✓
85-384/85-385	6A/6	✓		
85-375/85-376/85-377/85-377J/85-378	6	✓		
85-367/85-362/86-367J	6	✓		
85-366	6	✓		
85-370/85-371/85-372/85-372J/85-373	5e		✓	
85-365/85-361	5e		✓	
85-346/85-396/86-396/86-396J/85-147	5e		✓	
85-345/85-344	3			✓