

JR-2000



**Test Equipment
Depot**
1-800-517-8431

99 Washington Street
Melrose, MA 02176
Phone 781-665-1400
Toll Free 1-800-517-8431

Visit us at www.TestEquipmentDepot.com

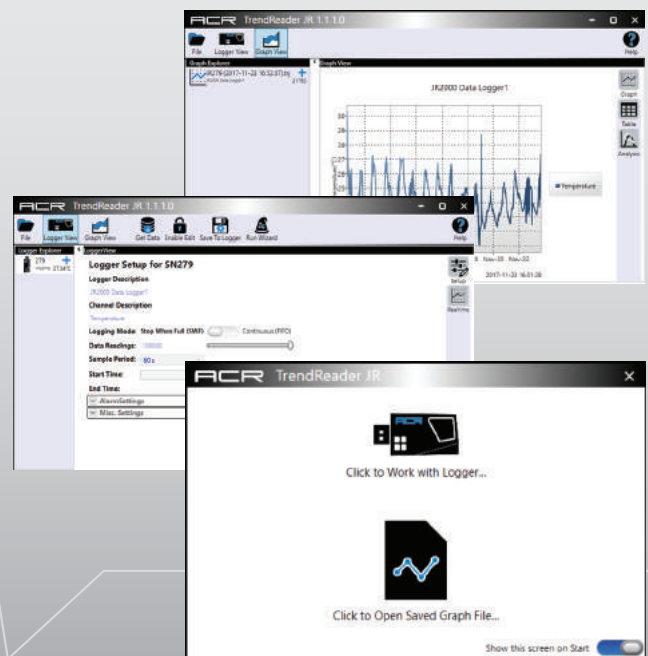
The longest lasting single channel
USB temperature data logger
supporting the widest
temperature range



Introducing the JR-2000 - the next generation of ACR's successful JR-1000 single channel temperature logger now with an easy-to-use USB interface and improved Windows software! The new JR-2000 continues to lead the industry in supported temperature range, battery life, and warranty providing the ideal temperature logging solution for in-building, storage, transport, and environmental monitoring applications across a range of industries. With its precision calibrated internal temperature sensor, simply place the logger in the field and leave it to record. Once the desired data has been gathered, plug the logger into the USB port of your computer to download and view logged data using ACR's TrendReader® Jr software.

FEATURE HIGHLIGHTS

- Widest temperature range (-40°F to 185°F or -40°C to 85°C)
- Longest battery life even at extreme temperatures
- Industry-leading storage size at over 100,000 samples
- Configurable sample rates from every 10 sec. to every 18 hrs.
- Large, multi-color visual status & alarm indicator
- Both ring mount & magnetic mounting options
- Compact, lightweight design that easily fits crowded USB ports
- Easier-than-ever Windows software with configuration wizard
- 3-year warranty



SAMPLE APPLICATIONS

Food process verification, pharmaceutical storage, laboratories, transportation of temperature-sensitive goods, equipment run time monitoring, HVAC system testing and balancing, etc.

PRODUCT SPECIFICATIONS

Size:	80mm x 30mm x 16mm
Weight:	37 g
Connector:	USB Type A
Temperature Range:	-40°F to 185°F or -40°C to 85°C
Humidity:	0 to 95% RH (non-condensing)
Minimum Battery Life:	3 years, all temperature conditions
Typical Battery Life:	5+ years, -40°C to 40°C
Storage/Memory Size:	100,000 samples (e.g. 11 days at 10-second samples, 2 months at 1-minute samples)
Sample Rates:	Every 10 seconds to every 18 hours
Logging Mode:	Stop-When-Full or First-In-First-Out
Sample Method:	Average or spot reading
Start Delay:	Up to 18 hours
Alarm:	High & Low Temperature thresholds, Latched or current value
Status Indicator:	Flash every 10 seconds Green = Logging Red = Alarm or Full Blue = Delayed Start
Clock Accuracy:	+/- 2 seconds / day
Sensor Accuracy:	0°C to 70°C = +/- 0.2°C < 0°C and >70°C = +/- 0.6°C or better
Calibration Period:	1 year
Resolution:	-10°C to 50°C = 0.03°C -35°C to -10°C = 0.1°C or better 50°C to 85°C = 0.1°C or better
Mounting:	Multiple mounting options
Software:	ACR TrendReader® Jr (compatible with Windows 7, 8 & 10)



ORDERING INFORMATION

Item:	JR-2000
Catalog #:	01-0197



ISO 9001 Certified

Rev: 0 - 01/02/18

Test Equipment Depot - 800.517.8431 - 99 Washington Street Melrose, MA 02176

TestEquipmentDepot.com