



## JR2000 Instructions

Here is a brief tutorial on installing and using the JR2000 temperature data logger and software.

Plugging the JR2000 data logger into a USB port on your computer will yield the following screen:



If you do not have the software loaded on the computer yet, click the blue download button to get the software from the ACR Systems website. If the software was previously loaded on the computer, the program can be launched by clicking the DATA.TRJ icon.

Once the program launches, you will see the following screen:



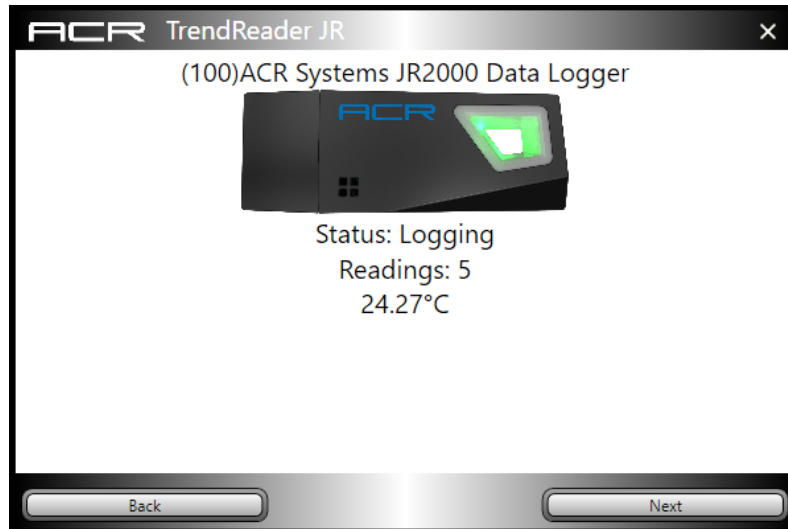
You can choose to access and work with the JR2000 data logger, by clicking the top icon, or accessing saved graph files by clicking the lower icon.

Clicking the top icon (Work with Logger) brings up the following screen:

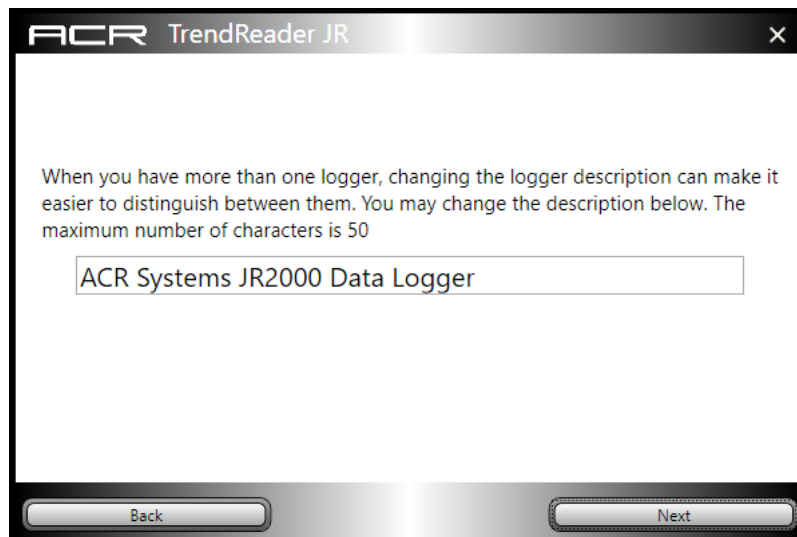


You can select to either download the stored data in the JR2000 by clicking the top icon, or you can enter the Set Up Wizard by clicking the bottom icon.

To enter the Set Up Wizard, click the bottom icon. The Wizard starts:



Clicking Next steps you through the set up wizard.



ACR TrendReader JR

The sample rate is the amount of time between measurements. In Stop When Full (SWF) mode, a longer sample rate means you can continue recording for a longer period of time before the memory becomes full. In FIFO mode, when the logger becomes full, the oldest data is overwritten. The end time below indicates when the logger will become full, based on your selected sample rate.

Sample Period: 10 s

Stop When Full ☐ First In, First Out

Logger will be full at: Nov-26-2017 11:22:20 PM

Back Next

ACR TrendReader JR

You can configure the logger to alarm (change the flashing color to RED) when the temperature exceeds the limits that you set. You can also latch the alarm (set the alarm to remain active even if the temperature returns to normal)

High Alarm ☒ Value: 28 °C


Low Alarm ☒ Value: 13 °C

Latch ☐

Back Next

ACR TrendReader JR

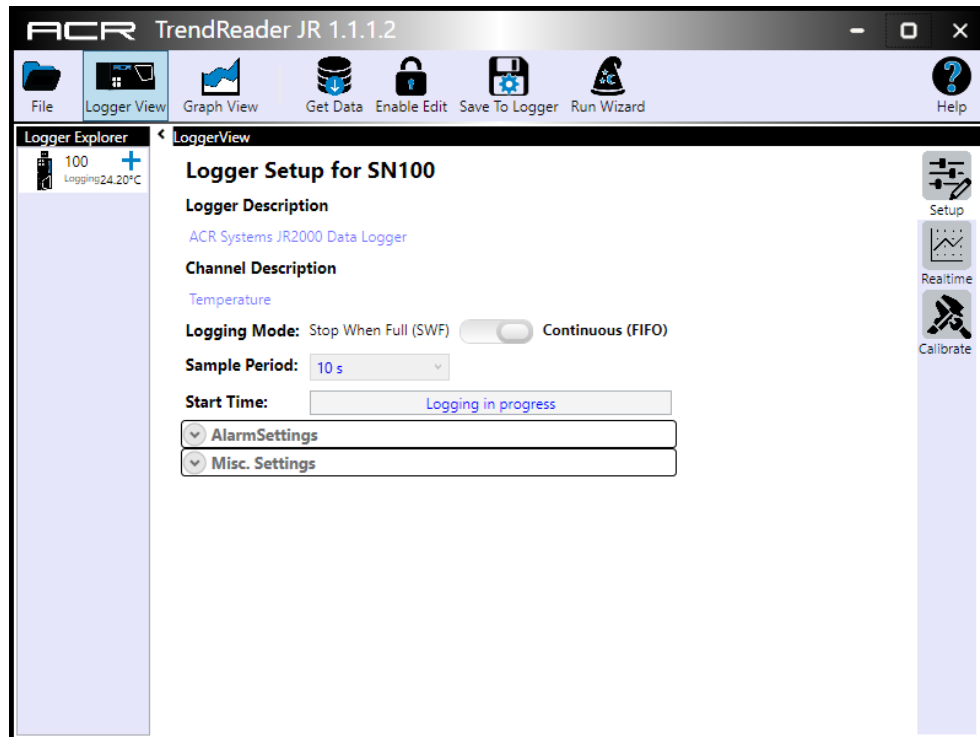
The save settings button will save your settings in the logger and start logging

 Save Settings

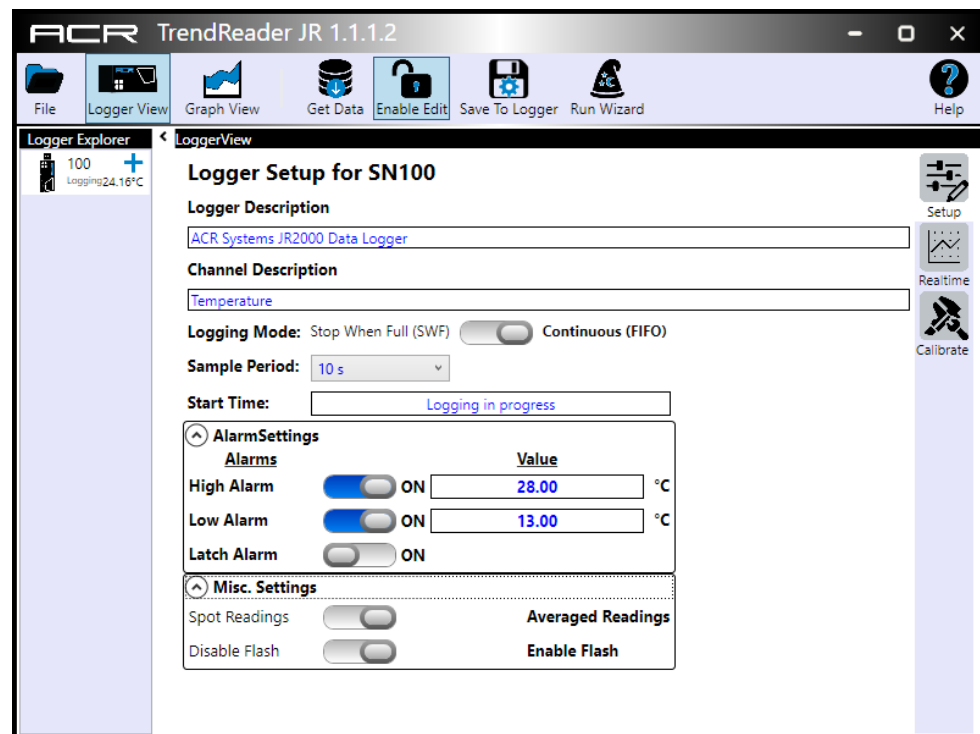
Back

Saving the settings will clear the logger and start it logging again with your new settings. That's it. The logger is ready to go.

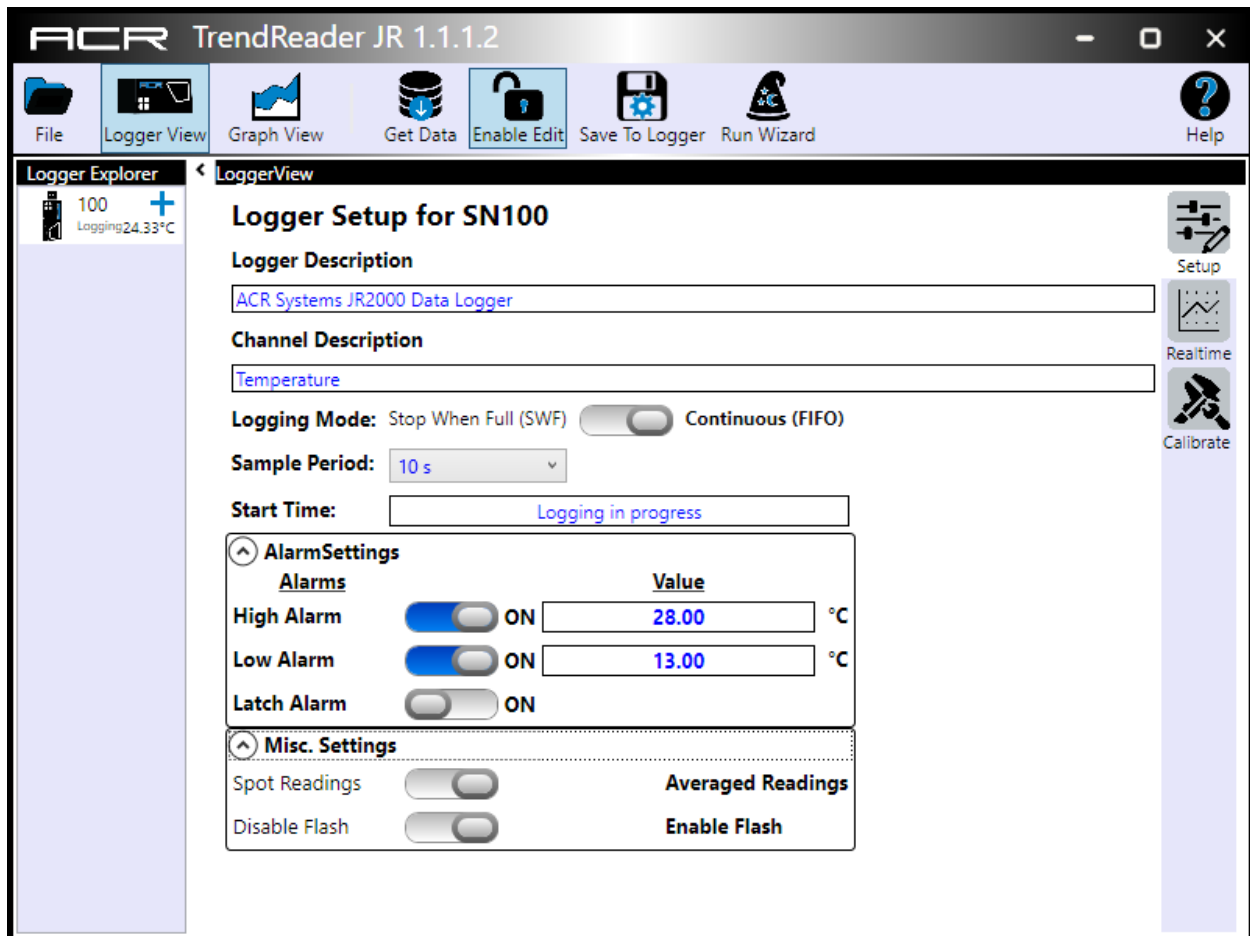
(You can exit the Wizard at any time by clicking the X in the top right corner.) The software will then take you to the main screen:



Here you have a complete view of the JR2000 logger's settings. To further access or change the JR2000's settings, click the Enable Edit button:



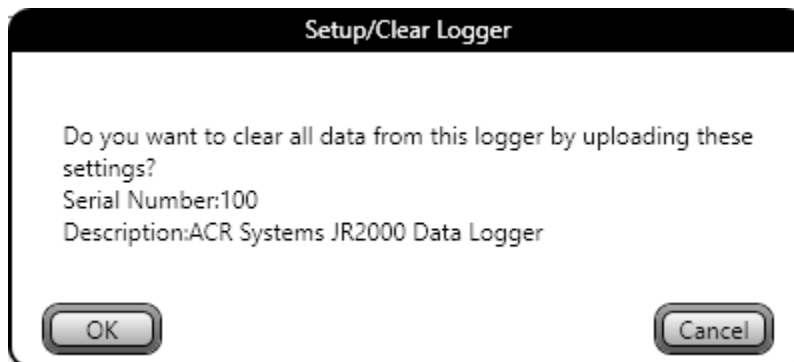
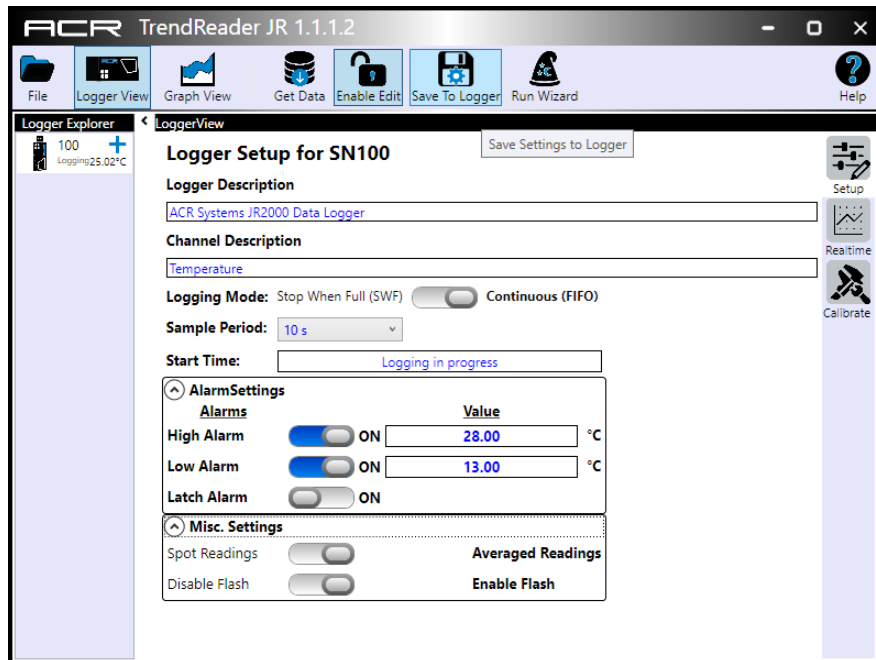
This will allow you access to the JR2000's full set up capabilities.



You can change / set:

- The Logger Description as well as the Channel Description.
- The Logging (memory) Mode.
- The Sample Period (interval).
- The Start Time (delay start) – (logger flashes **Blue** if delayed start is pending.)
- Alarm thresholds high and /or low – (logger flashes **Red** if alarm state is encountered.)
- Latch Alarm – logger continues to flash **Red** if an alarm state was encountered during the logging session.
- Whether the logger logs only at the sample interval (Spot) or Averages over the Sample Period.
- Disable the LEDS from flashing. - (Logger normally flashes **Green** during normal logging.)

Clicking the Save To Logger button will save the settings, clear the logger and commence the next logging session.



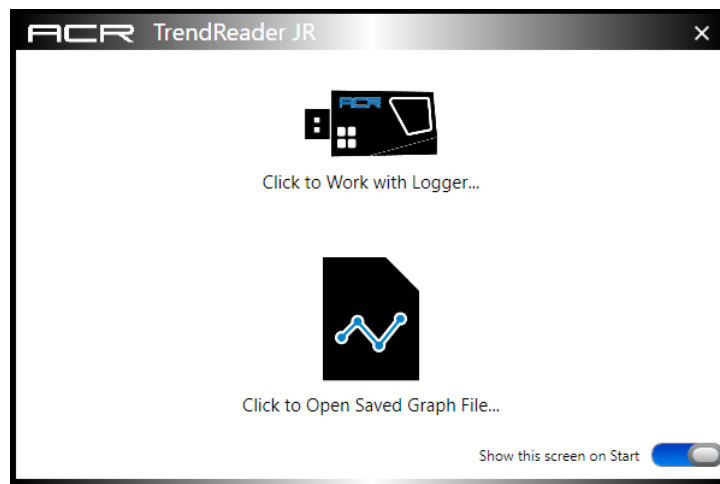
## Download and Graphing

Once the JR2000 has collected some data, you can download it as follows:

Plugging in to USB will bring up the start screen as before.



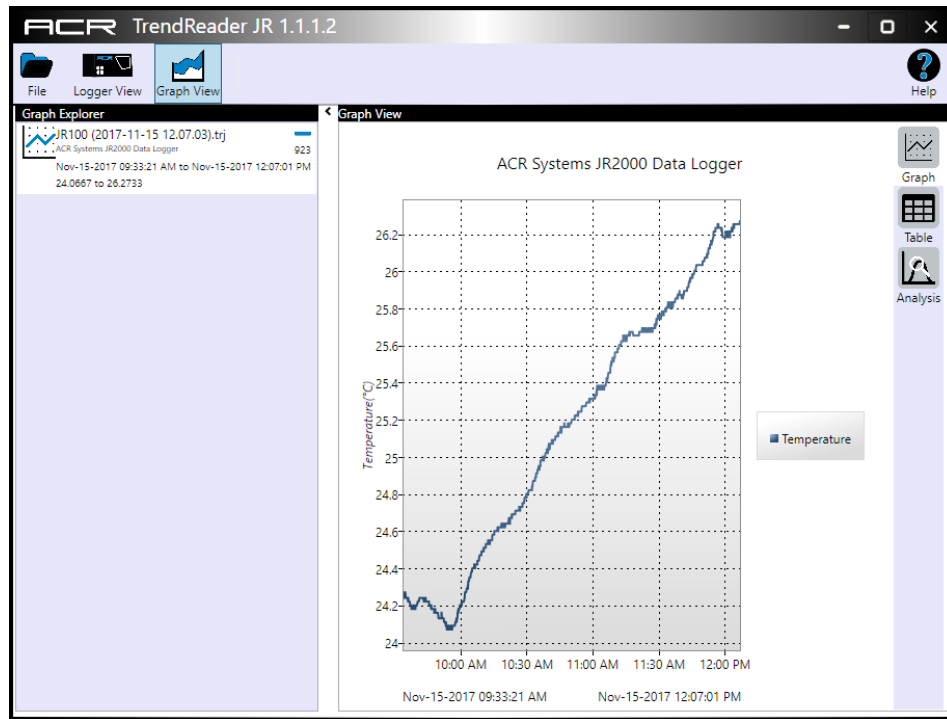
Clicking the DATA.TRJ icon will launch the program.



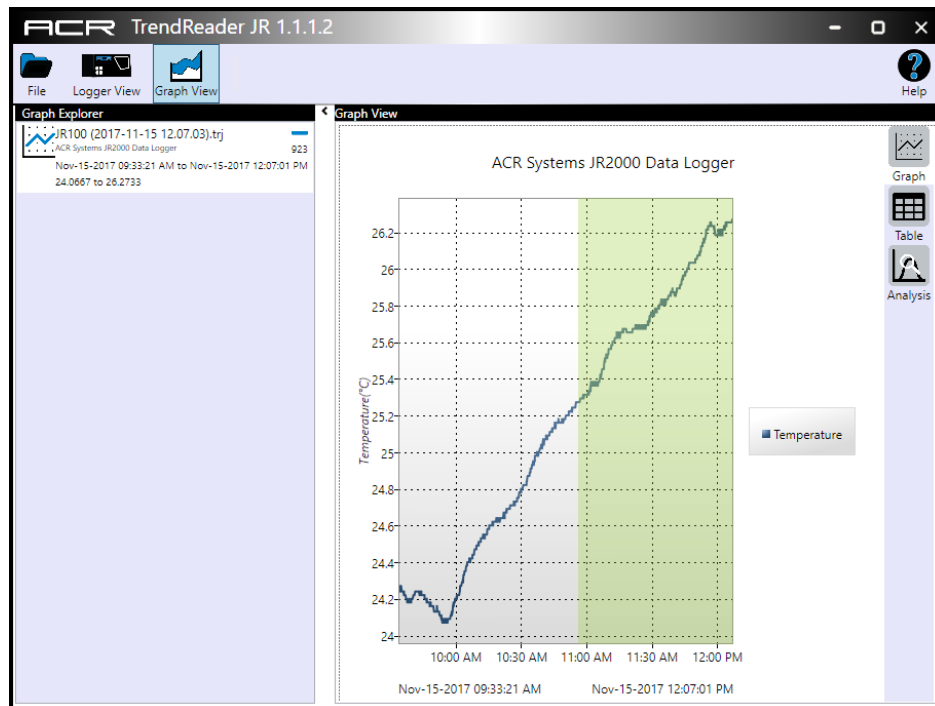
Clicking the top icon (Work with Logger) ...



Click the Download Data button. The downloaded graph will display.

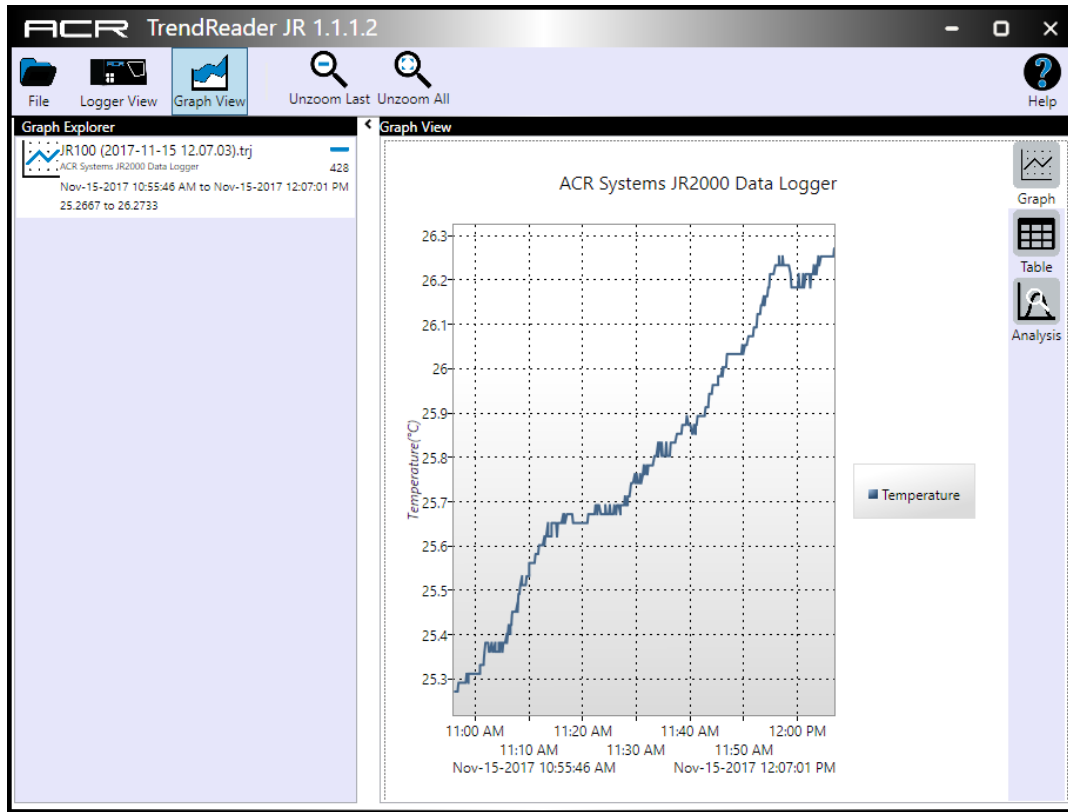


The file is automatically saved in your Documents folder with a file name consisting of the serial number of the JR2000 and the time and date of the download.

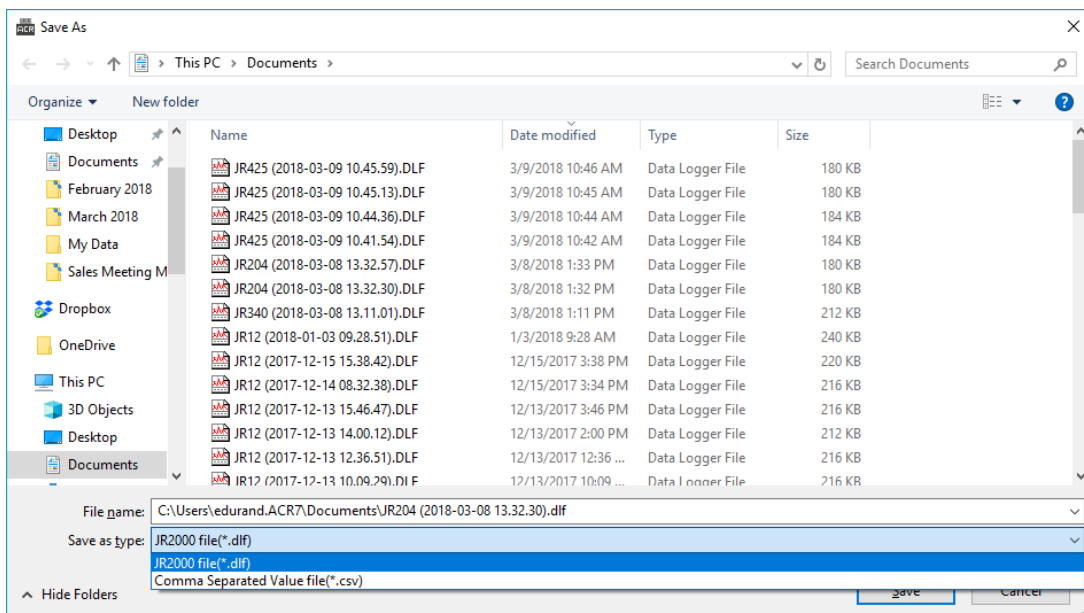


You can zoom on the graph by holding down the left mouse button and dragging the mouse left or right. The zoomed area will highlight. When you release the left mouse button the highlighted area will be zoomed in. You can zoom multiple times.

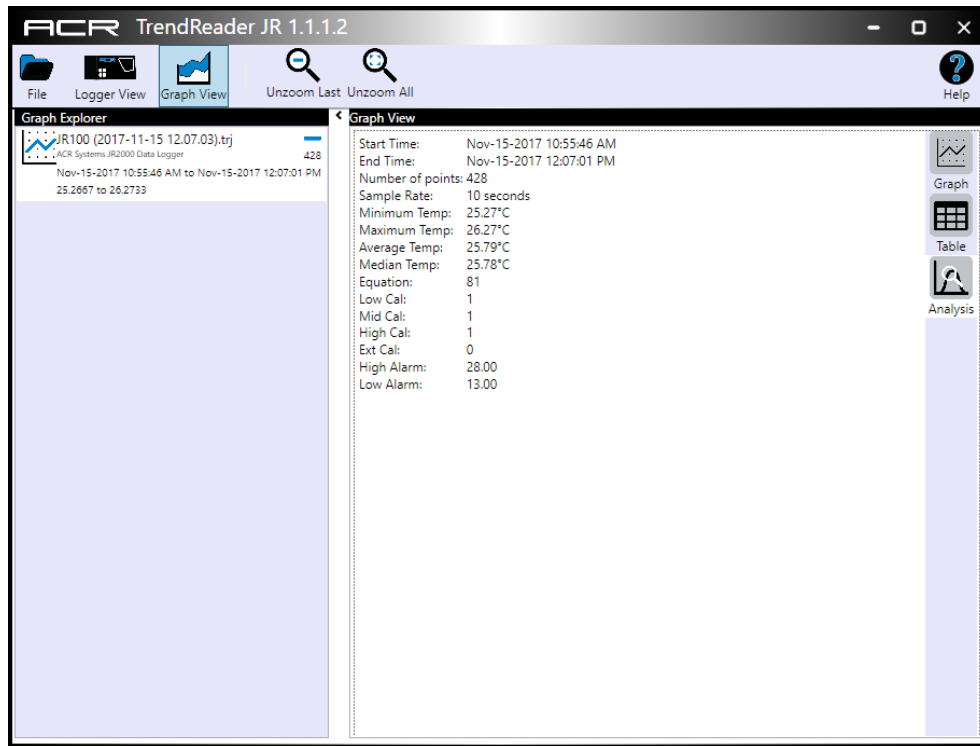




The file is saved in the .DLF format, for use with ACR TrendReader 2 or 3 or can be converted to .CSV for use with Microsoft Excel.



The Analysis button will display statistics for the downloaded file.



A Table view is also included.

The screenshot shows the ACR TrendReader JR 1.1.1.2 application window with the 'Table View' tab active. The table displays the following data:

Date/Time	Channel Value
Nov-15-2017 10:55:51 AM	25.27°C
Nov-15-2017 10:56:01 AM	25.27°C
Nov-15-2017 10:56:11 AM	25.27°C
Nov-15-2017 10:56:21 AM	25.27°C
Nov-15-2017 10:56:31 AM	25.27°C
Nov-15-2017 10:56:41 AM	25.27°C
Nov-15-2017 10:56:51 AM	25.27°C
Nov-15-2017 10:57:01 AM	25.29°C
Nov-15-2017 10:57:11 AM	25.29°C
Nov-15-2017 10:57:21 AM	25.29°C
Nov-15-2017 10:57:31 AM	25.29°C
Nov-15-2017 10:57:41 AM	25.29°C
Nov-15-2017 10:57:51 AM	25.29°C
Nov-15-2017 10:58:01 AM	25.29°C
Nov-15-2017 10:58:11 AM	25.29°C
Nov-15-2017 10:58:21 AM	25.29°C
Nov-15-2017 10:58:31 AM	25.31°C
Nov-15-2017 10:58:41 AM	25.29°C
Nov-15-2017 10:58:51 AM	25.31°C
Nov-15-2017 10:59:01 AM	25.31°C
Nov-15-2017 10:59:11 AM	25.31°C
Nov-15-2017 10:59:21 AM	25.31°C
Nov-15-2017 10:59:31 AM	25.31°C
Nov-15-2017 10:59:41 AM	25.31°C
Nov-15-2017 10:59:51 AM	25.31°C
Nov-15-2017 11:00:01 AM	25.31°C
Nov-15-2017 11:00:11 AM	25.31°C
Nov-15-2017 11:00:21 AM	25.31°C

The 'Graph Explorer' on the left shows the file 'JR100 (2017-11-15 12.07.03).trj' with 428 points, covering the time range from Nov-15-2017 10:55:46 AM to Nov-15-2017 12:07:01 PM, with a temperature range of 25.2667 to 26.2733.

A Realtime Graphing function is included for use when the JR2000 is left connected to a computer. You can access it on the right, from the main screen in the Logger View.

