

WARNING



Read and understand these instructions, the battery drill instructions and the warnings and instructions for all equipment being used before operating this tool to reduce the risk of serious personal injury.

- Do not wear loose clothing or jewelry. Keep your hair and clothing away from moving parts. Loose clothing, jewelry or hair can be caught in moving parts.
- Always use safety glasses and leather work gloves in good condition while handling or using. Use latex or rubber gloves, face shields, protective clothing, respirators or other appropriate protective equipment when chemicals, bacteria or other toxic or infectious substances are suspected to be present to reduce the risk of infections, burns or other serious personal injury. Wear latex gloves or rubber gloves under leather gloves.
- Practice good hygiene. Use hot, soapy water to wash hands and other body parts exposed to drain contents after handling or using drain cleaning equipment. Do not eat or smoke while operating or handling drain cleaning equipment. This will help prevent contamination with toxic or infectious material.
- Do not use with a corded drill. Operating with a corded drill increases the risk of electrical shock.

Description and Specifications

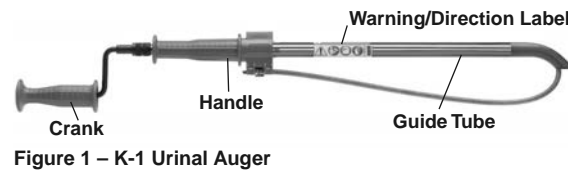
Description

The RIDGID® Model K-1 Combination Auger is specifically designed to clean urinal drains through the urinal trap. It will clean drain lines up to 2" in diameter and up to 4' in length and may also be used on shower drains and clean outs.

The Auger can be operated either manually or driven with a battery powered drill with a maximum speed of 500 rpm. The K-1 Combination Auger may not be able to pass through all urinal traps, depending on the design.

Specifications

- Cable Size.....3/8" (10 mm) Hollow Core
- Cable Length.....4' (1.2 m)
- Max. Pipe Capacity...2" (50 mm)
- Min. Pipe Capacity....1 1/4" (32 mm)
- Head Type....."C" Cutter
- Maximum RPM.....500



NOTICE This machine is made to clean drains. Properly used, it will not damage a drain that is in good condition and properly designed, constructed and maintained. If the drain is in poor condition, or has not been properly designed, constructed and maintained, the drain cleaning process may not be effective or could cause damage to the drain. The best way to determine the condition of a drain before cleaning is through visual inspection with a camera. Improper use of this drain cleaner can damage the drain cleaner and the drain. This machine may not clear all blockages.

Inspection/Maintenance

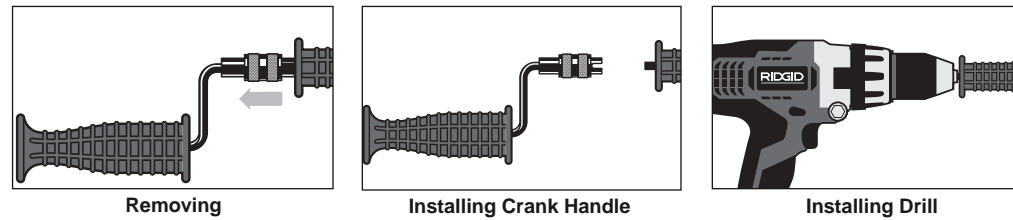
Clean equipment, including handle to aid inspection and improve control. Clean any debris from the cable. Inspect the Combination Auger for proper assembly, completeness, binding, wear or damage (such as flats, kinks, stretching or corrosion). If any problems are found, do not use until corrected. If using a battery powered drill, inspect per its instructions. Confirm that the drill is in good operating condition, the switch controls operation and that the drill turns at less than 500 rpm.

Set Up/Operation

1. Inspect the drain. Confirm the K-1 Combination Auger is appropriate for the job. Determine if chemicals are present. If chemicals are present in the drain, it is important to understand the specific safety measures required to work around those chemicals. Contact the chemical manufacturer for required information. Take appropriate steps to access the drain.
2. Make sure all equipment is inspected and set up per its instructions.
3. Manual operation - make sure that the crank handle is securely attached.
4. Powered Operation
 - Set battery powered drill to low speed (less than 500 rpm) and with dry hands insert the battery.
 - Set drill to turn the auger in the FORWARD direction (see the label on the guide tube).
 - Remove the crank handle from the combination auger. Securely attach the chuck of the drill to the drive shaft. (See Figure 3).



Figure 2 – Direction Label



Figures 3A, B, C

5. Pull the Crank handle or drill up to retract the cable into the guide tube (Figure 4). Carefully insert the guide tube into the urinal/drain. Tilt the auger for easy entry. The end of the guide tube must be in the drain to properly support the cable and prevent cable whipping. The cable and cutter can damage the porcelain.
6. Rotate the cable in the Forward (clockwise) direction while pushing the crank handle or drill toward the guide tube to advance the cable into the drain (Figure 5). To negotiate urinal traps and other tight bends:
 - Use sharp thrusts of the cable in and out, both with and without the cable rotating.
 - Turn the auger in reverse for several seconds while advancing the cable. Do this only long enough to advance through the trap. Running the cable in reverse can damage the cable.

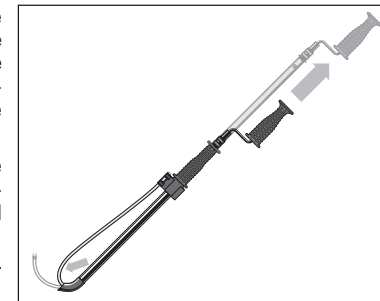


Figure 4 – Retracting the Cable

- Do not force the cable – if the cable stops turning, it is not cleaning the drain. It may be necessary to spin the cable without advancing it, or advancing the cable very slowly. This will help to break up the blockage.
7. If the cable becomes stuck in the blockage, do not continue turning it. Continuing to turn the cable may cause it to twist, kink and break. It may be necessary to back the cable out of the blockage by pulling back on the crank handle.

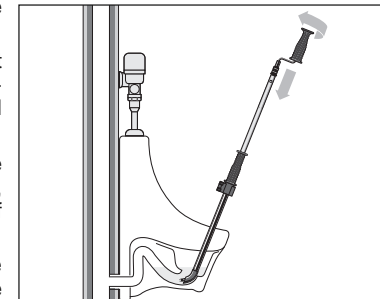


Figure 5 – Operating the Auger

- If the cable will not come free from the blockage, rotate the cable in Reverse direction, and pull on the cable until it is free of the blockage. Do not operate the machine in the reverse direction any longer than required to free the cable end from the blockage or cable damage can occur.
8. To extend cable beyond the initial 2' (.6 m), press button (Figure 6). Pull crank handle/drill up until button locks into second hole.
 9. Continue to rotate the cable in the Forward (clockwise) direction while pushing the crank handle or drill toward the guide tube to advance the cable into the drain.
 10. Reverse procedure to retrieve cable. Continue rotating handle in Forward (clockwise) direction.
 11. Do not remove guide tube from urinal/drain until the cable is fully retracted into the handle and rotation has completely stopped.

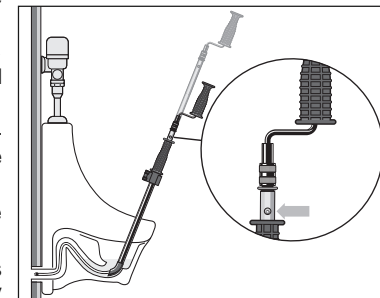


Figure 6 – Extending the Cable

Cleaning

Cable should be thoroughly flushed with water to prevent damaging effects of sediment and drain cleaning compounds. Clean exterior as needed with hot soapy water and/or disinfectants.

Test Equipment Depot
 99 Washington Street
 Melrose, MA 02176
 Phone 781-665-1400
 1-800-517-8431 Toll Free 1-800-517-8431

Visit us at www.TestEquipmentDepot.com