

M2003 Series Smart Manometer



Two Sport Aviation calibration references in one portable device. Meriam's M2003 Altimeter/Indicated Air Speed Tester accurately measures pressure from 0 to 30 psi or 0 to 100 psi relative to absolute zero.

Meriam Tethered Sensor (optional accessory)



But that's not all. In Pressure mode, the M2003 displays pressure in a variety of Customary and SI measurements units. Selecting the ALT or IAS switches the M2003 to Altitude mode for use in checking altimeter instrumentation. Customary or SI measurement units for Altitude and Indicated Air Speed are selectable by the customer.

A time leak test function is standard for Pressure mode. Customers set the test period and the test. The M2003 displays Minimum, Maximum, and live measurements. The leak rate per minute upon completion.

***Intrinsically Safe options available**

Meriam Tethered Sensors (MTS)

Expand the capabilities of the M2000 by adding an MTS to measure a second pressure or a PT100 Class A RTD temperature.

Choose any available pressure or temperature sensor type and range and connect your accessory MTS using the included 1 meter cable.

This is an interchangeable sensor giving extra flexibility to your measurement needs.

Features on M2003

- Altitude displayed in feet or meters
- Indicated Air Speed in MPH, KNOTS, KM/H
- Corrections for Altitude and Sea Level
- Backlight and 4 levels: Off, Low, Med, High
- Battery charge display (0 to 100%)
- Min/Max pressure capture
- RTD (Temperature) accessory sensor option with MTS
- Compound, Absolute, and Differential pressure sensors-available with optional MTS
- Protective red boot
- Optional pressure fittings and hand pump kit

Applications

- Testing and calibration of altimeter and air speed instruments

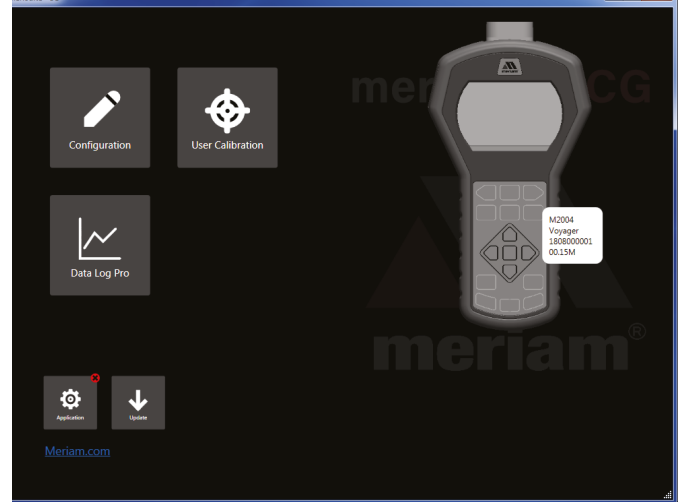
meriSuite CG

Our meriSuite CG application is included with the M2003 so you can configure M2003 and MTS to streamline your daily measurement tasks.

Configure the Smart Manometer and sensors

Configure and download data logs, select measurement units and configure user defined units, turn on and off device functions, and calibrate your device using your local measurement standards.

Add Data Log Pro to the M2003 to expand data logging capabilities to 128 log files or 100,000 data points. Modify data log options and settings using Data Log Pro tab in meriSuite CG.



Specifications M2003 Altimeter IAS Tester

Altitude	<ul style="list-style-type: none"> -2000.0 ft to 36,000 ft -609.6 m to 10972.8 m
Indicated Air Speed	<ul style="list-style-type: none"> 0 knots to 660 knots 0 to 760 mph 0 km/h to 1223 km/h
Pressure Accuracy	<ul style="list-style-type: none"> $\pm 0.020\%$ Full Scale + 0.005% of Reading
Pressure Ranges (select one) Non-Isolated	<ul style="list-style-type: none"> Compatible with clean, dry, non-corrosive, gas media 0 to 30 psi and 0 to 100 psi Absolute Additional ranges available with MTS
Pressure Ranges: Media-isolated	<ul style="list-style-type: none"> Media compatible with 316SS 0 to 30, 100 psi Absolute Additional ranges available with MTS
Measurement Units	<ul style="list-style-type: none"> Offering over 30 measurement units including psi, kPa, mmHg, inH₂O, mbar, and user defined units - available with optional MTS
Display Resolution	<ul style="list-style-type: none"> Up to 6 digits depending on pressure units
Temperature Specifications	<ul style="list-style-type: none"> Storage: -20 °C to 70 °C (-4 °F to 158 °F) Operating: -10 °C to 50 °C (14 °F to 122 °F)
Dimensions with boot	<ul style="list-style-type: none"> Length 9.8 in (248.9 mm) from manifold to end of boot Width 5.2 in (132.1 mm) at widest point with boot Thickness 2.3 in (58.4 mm)
Connections	<ul style="list-style-type: none"> 1/8" Female NPT 316SS USB Meriam Tethered Sensor (MTS) Port USB
Power	<ul style="list-style-type: none"> 4 AA batteries
MTS RTD Specifications	<p>Temperature Probe Accuracy</p> <ul style="list-style-type: none"> IEC 60751 PT100 class A Tolerance = $\pm (0.15 + 0.002 t)$ °C Probe measurement range: -50 °C to 250 °C