



SPECIFICATIONS:

RANGE	0.0 to 10.0 mS/cm
RESOLUTION	0.1 mS/cm
ACCURACY (@25°C)	±2% Full Scale
SETPOINT	0.8 to 2.8 mS/cm
ALARM	active when the measure is bellow / above than the setpoint, in according with the BELLOW / ABOVE switch
TEMP.COMPENSATION	Automatic, from 0 to 50°C
ENVIRONMENT	0 to 50°C; 95% RH max.
PROBE	MA812/2 (included)*
POWER SUPPLY	12 VDC adapter (included)
DIMENSIONS	148.5 x 82.5 x 32 mm
WEIGHT	180 g (meter only)

(*) To be replace by technical personnel only.

WARRANTY:

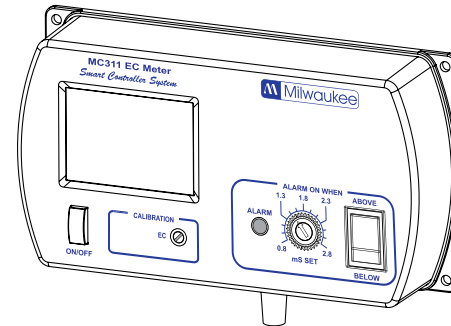
This instrument is warranted from all defects in materials and manufacturing for a period of **two years** from the date of purchase. **The probe is warranted for a period of 6 months.** If during this period, the repair or replacement of parts is required, where the damage is not due to negligence or erroneous operation by the user, please return the parts to either dealer or our office and the repair will be effected free of charge.

Note: We reserve the right to modify the design, construction and appearance of our products without advance notice.

CONDUCTIVITY CONTROLLER

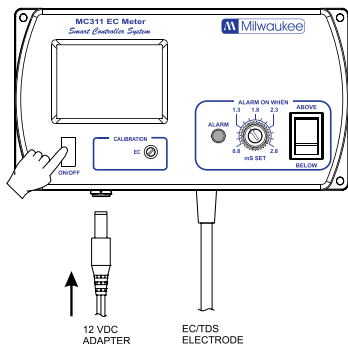
MODEL: MC311

Smart Controller System



OPERATION:

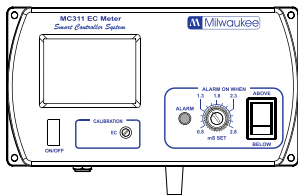
- Connect the supplied 12 VDC power adapter to the meter and to the mains.
- Make sure the meter has been calibrated before taking any measurements (see Calibration Procedure).
- Immerse the tip (4 cm) of the Conductivity probe into the sample.
- Turn the instrument on by pressing the ON/OFF key.
- Wait for thermal equilibrium to be reached and the meter will start continuous monitoring.
- Set the BELLOW / ABOVE alarm activation switch in the desired position.
- A blinking alarm will indicate when the measured EC or TDS value is lower/higher than the setpoint (in accordance the BELLOW / ABOVE switch).



NOTE: The output power contact has no protection fuse inside the meter. It is recommended to protect it outside, against failure.

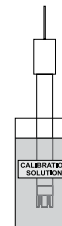
SETPOINT:

- The setpoint can be selected by adjusting the central front knob to the desired value.
- The selectable range for **MC311** is from 0.8 to 2.8 mS/cm.



CALIBRATION PROCEDURE:

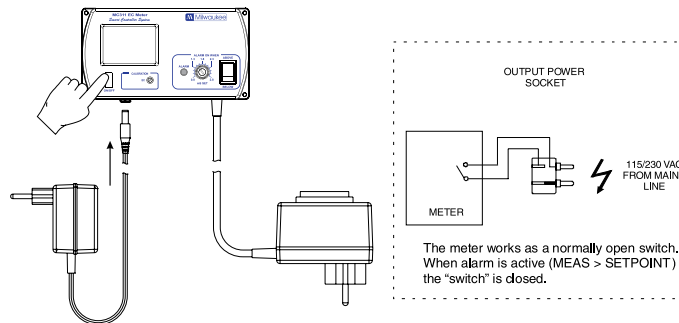
- Clean the probe with alcohol and let it dry (if a more thorough cleaning is required, brush the metal pins with fine sandpaper and then rinse with water).
- Open a sachet of **M10039** (5.00 mS/cm) conductivity calibration solution and immerse the probe, making sure that metal pins are completely submerged.
- Turn the meter on by pressing the ON/OFF key.
- Wait until the reading stabilize for temperature variations, and then adjust the EC/TDS calibration trimmer on the front panel with the supplied screwdriver until the display shows: "5.0" mS/cm.



The calibration is now complete and the meter is ready for use.

The instrument should be re-calibrated at least once a month, or when the probe is changed.

INSTALLATION PROCEDURE:



OPTIONAL ACCESSORIES:

- M10039B** 5.00 mS/cm cal. solution, 20 mL sachet (25 pcs.)
- MA812/2** Conductivity probe with 2 m cable