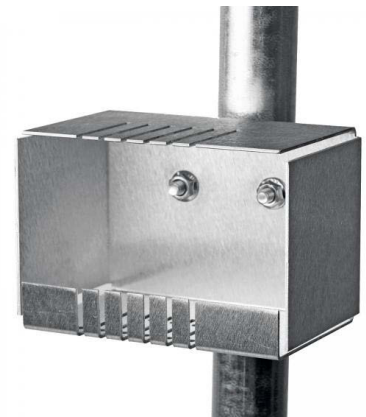




HOBO® M-CDY

Cable Caddy

This accessory provides a convenient place to organize and mount excess sensor cable.



Key Advantages:

- Provides a convenient and professional-looking way to organize extra sensor cable and smart-sensor adapters
- Extends sensor cable life by securing extra cables inside it
- Provides a convenient place to mount the S-BPB barometric pressure sensor
- Includes U-bolt for mast mounting and 4 cable ties
- 0.3 kg (11 oz)
- 15 x 10 x 9cm (6" x 4" x 3.5")
- Mounts to 4.1 cm (1.63 inch) mast, or flat surface.

HOBO M-CDY Specifications

- 0.3 kg (11 oz) 15 x 10 x 9cm (6" x 4" x 3.5")
- Mounts to 4.1 cm (1.63 inch) mast, or flat surface.