

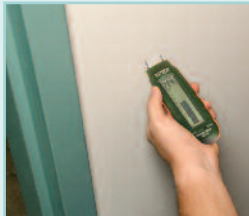
# Pocket Moisture Meter

## Large Dual Graphical LCD

Displays moisture in wood and other building materials

### Features:

- 2-in-1 Digital LCD readout and analog bargraph
- Use on wall board, sheet rock, cardboard, plaster, concrete, and mortar
- Self-contained, pocket sized meter with belt clip
- Replaceable threaded measurement electrode pins
- Impact proof housing
- Auto power off conserves battery energy
- Battery operated for on-the-go measurements
- Built-in battery check and measurement verification test
- Complete with protective cap, replacement pins, and three CR-2032 button batteries



Measures Moisture of wood and building materials. Built-in battery check and measurement verification test to insure accurate readings



### Specifications

Wood Moisture Range	6 to 44%
Basic Accuracy	±1%
Other Building Materials	0.2 to 2.0%
Basic Accuracy	±0.1%
Measurement principle	Electrical resistance
Electrode length	0.3" (8mm)
Electrode pins	Integrated, replaceable
Auto Power Off	After approx. 15 minutes
Operating Temperature	32 to 104°F (0 to 40°C)
Operating Humidity	85% Relative Humidity maximum
Power supply	Three CR-2032 button cells
Dimensions	5.1 x 1.6 x 1.0" (130 x 40 x 25mm)
Weight	3.5 oz (100g)

**Test Equipment Depot**  
1-800-517-8431

99 Washington Street  
Melrose, MA 02176  
Phone 781-665-1400  
Toll Free 1-800-517-8431

▶ Visit us at [www.TestEquipmentDepot.com](http://www.TestEquipmentDepot.com)

▶ Back to the Extech MO210 Product Info Page