

Keysight Technologies

N9340B Handheld Spectrum Analyzer (HSA)

3 GHz

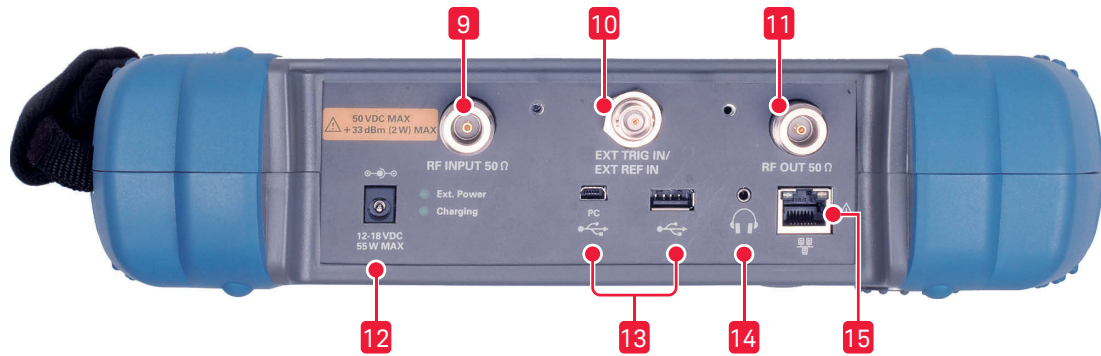
Technical Overview



Front Panel



Top Panel



Front panel

1. 6.5 TFT display
2. Light sensor
3. Speaker
4. Soft keys
5. Back-lit keys
6. Power on/off
7. Function keys
8. Preset

Top panel

9. RF INPUT (50 Ω)
10. EXT TRIG IN/EXT REF IN
11. RF OUT (50 Ω)
12. Power input (55 W Max)
13. USB connectors
14. Headphone connector
15. LAN connector

Know your spectrum

Regardless of whether you are handling military communications, a Wireless Service Provider (WSP), or involved with spectrum management you need to avoid impaired communication. The N9340B provides you with a reliable, accurate and detailed picture of your communication spectrum.

Optimize your test time versus accuracy

When you test, you need fast data capture to help locate and identify elusive, transient interference signals. That's why every N9340B spectrum analyzer has a truly fast sweep time. It requires less time to measure across the spectrum, to obtain more reliable test results and to help you achieve more for the same investment of time and money.

Gain confidence in your test results

Spurious signals and noise are of great concern to all network users. A superior combination of low displayed average noise level (DANL) and single sideband (SSB) phase noise coupled with a narrow resolution bandwidth (RBW) means your signal measurements are more reliable and you will have more confidence in your test results. The N9340B's low DANL and SSB phase noise helps you detect very low-level signals (spurs or noise) which are close to the carrier. You will avoid missing these difficult-to-identify signals, which would otherwise lead to an insufficient or even incorrect understanding of the spectrum.

The N9340B's RBW is the narrowest in its class. The narrow 30 Hz bandwidth of the analyzer ensures that it is even easier to identify, resolve, and measure two signals that are close together. Additionally, with a resolution filter shape-factor of less than 5, the N9340B has the ability to resolve closely spaced signals with unequal amplitudes.

Moreover, the narrow RBW means that the spectrum analyzer introduces minimal noise itself, helping to further reduce DANL and improve sensitivity.

Superior sensitivity

With more wireless devices on the market requiring greater bandwidth usage, the ability to discriminate between different signals becomes more challenging. It's under such demanding conditions that the superior performance of an N9340B analyzer proves its worth. The N9340B has one of the best sensitivity and selectivity specifications. The DANL is -124 dBm, or -144 dBm with the optional preamplifier (30 Hz RBW, $10 \text{ MHz} < f_c \leq 1.5 \text{ GHz}$). The optional preamplifier adds 20 dB gain for improved analyzer sensitivity.

Speed at your fingertips

The RF spectrum is a finite resource, therefore its usage requires management. Most regulatory authorities responsible for administering frequency allocation require service suppliers and network operators to perform routine monitoring of signal power and transmission frequency stability.

N9340B superior performance ensures the field test confidence

- Superior sensitivity:
 - Lowest DANL in-the-class
- Fastest sweep time
- Narrowest resolution available

- **Frequency range:**
 - 100 kHz to 3 GHz
 - (tunable to 9 kHz)¹
- **DANL:**
 - (RBW = 30 Hz,
 - $10 \text{ MHz} < f_c \leq 1.5 \text{ GHz}$)
 - -124 dBm
 - -144 dBm with preamp on
- **Sweep time:**
 - 10 ms to 1000 s, span ≥ 1 kHz
 - < 120 ms at full span
- **RBW:**
 - 30 Hz to 1 MHz in 1-3-10 sequence
- **VBW:**
 - 3 Hz to 1 MHz
- **SSB Phase noise:**
 - < -87 dBc/Hz at 30 kHz offset
- **Amplitude accuracy:**
 - ± 1.5 dB

1. Low frequency performance enhancement options available. Check option N9340B-IBC.

N9340B is now equipped with powerful features to address field applications using a handheld spectrum analyzer. An analysis is identifying interfering signals. These often arise from illegal transmissions, and may cause impairment of services for authorized users, often resulting in financial loss. These interfering signals could possibly restrict critical communications of civil aviation and emergency services, which could jeopardize public safety.

Spectrogram

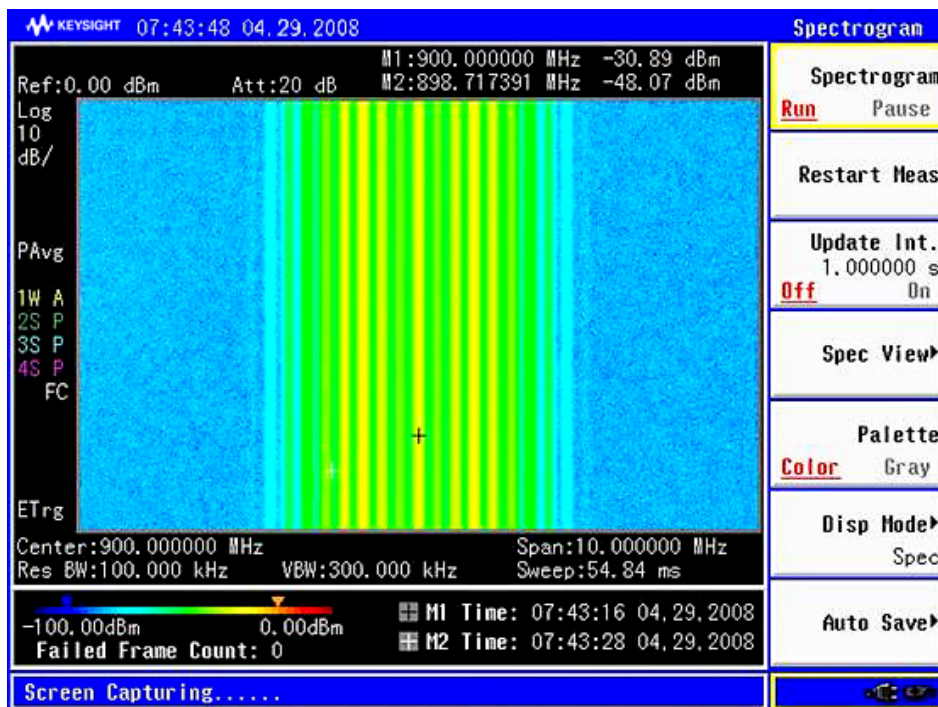
Now you can take advantage of the spectrogram display to view the behavior of varying signal parameters over time. The N9340B includes spectrograms as a standard feature. The scrolling three-dimensional display is noted for its ability to track the frequency and power behavior over the time, particularly intermittent signals. The user can use spectrogram to analyze the stability of a signal over the time, or to identify intermittent interference signals in communications systems.

There are two markers for the user to identify power versus frequency and time. Also the time interval between two consecutive colored rows can be adjusted. When a marker is put on the spectrogram, the N9340B can display the trace for the time of the selected marker.

The spectrogram data and screenshots can be saved and recalled for later analysis or reporting.

N9340B applications for field test

- **Aerospace and defence:**
Radio and radar test, interference analysis, on-site repair
- **Wireless service providers:**
Interference analysis, on-site repair
- **TV and broadcasting:** Interference analysis, channel power check
- **Spectrum management authority:**
Spectrum monitoring



The spectrogram gives the three-dimensional display of power, frequency and time.

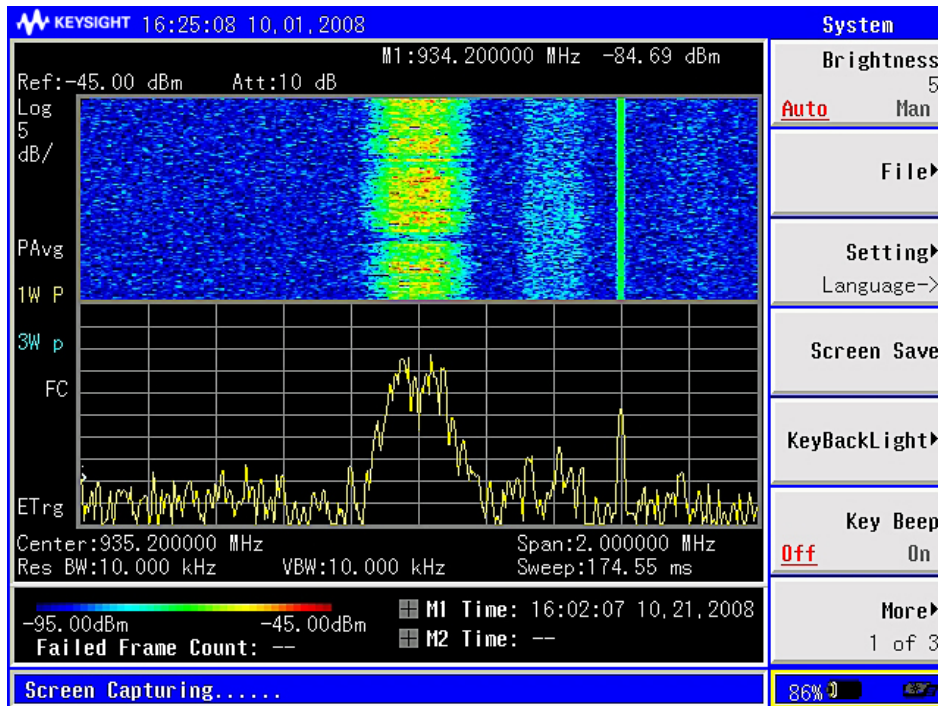
Extended spectrogrammonitoring (Option INM)

Option INM extends the N9340B spectrogram capability further with the ability to continuously monitor and save spectrogram data over time not only to the analyzer's internal memory or a USB flash drive, but also directly to a PC. With option INM users can save more than 1,500 continuous frames of data depending on the size of the USB flash drive or PC memory.

Option INM also supports an Automatic Save function. The N9340B can save the spectrogram at a user specific time or at a set interval of frame. All the small files with the same prefix can be combined into one file using N9340 PC Software, making analysis easier.

The user can choose among the 3 display modes: spectrogram only, spectrum trace only or the combination of a spectrogram and a spectrum trace in one screen. Limit lines with pass/fail functionality is also available in this measurement. The N9340B will identify the failed frame of spectrogram data with a red mark. The Pass/Fail test can also provide alerts. Users may use marker to find the previous/next frame failed data to quickly find the offending event or interference. The spectrogram data may be played back for review on either the analyzer's display or on a PC utilizing N9340B PC Software.

With the option INM, the Keysight N9340B spectrum analyzer can provide unattended monitoring of communication systems capturing performance or intermittent events like interference over extended periods of time – days rather than hours. The option INMcan provide additional value for the wireless network communication system managers, hospital administrators, etc. as well as police and homeland security by recording spectrogram measurement results over time.



The N9340B INM shows spectrogram and spectrum trace on the same screen.

IBOC measurements (Option IBC)

Option IBC equips the N9340B with in-band on-channel (IBOC) measurement capability through a dedicated measurement personality and selected hardware improvements. IBOC technology is a method of transmitting digital and analog radio broadcast signals (AM and FM) simultaneously on the same frequency. This HD Radio™ version of hybrid digital/analog technology is the only one approved by the FCC for U.S. radio broadcast stations.

The IBC option adds enhanced SSB phase noise for IBOC AM measurements and a noise cancellation process for improved IBOC FM measurement margins. IBOC-AM covers 530 kHz to 1.7 MHz and IBOC-FM covers the 87.5 MHz to 108 MHz frequencies.

Option IBC has built-in FCC and NRSC (National Radio Systems Committee) spectral emission masks for quick compliance measurements with visual and audible pass/fail indicators.

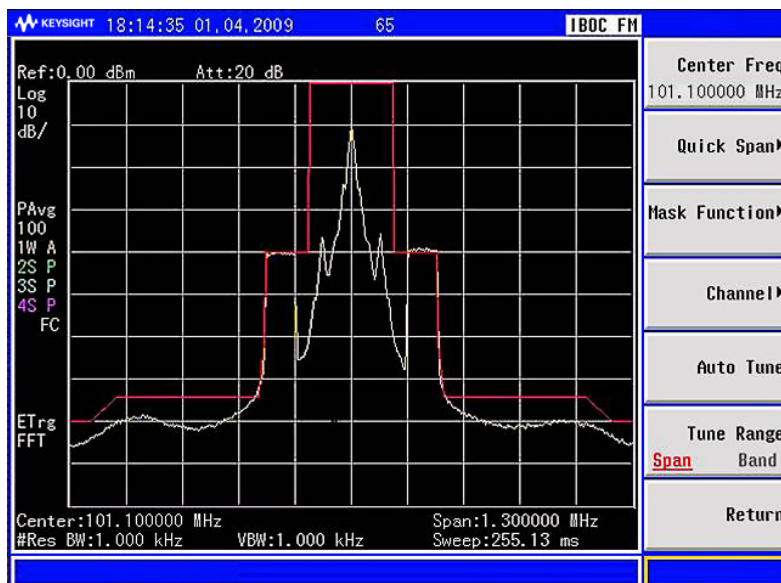
N9340B IBC also supports a one-button auto-tune function that greatly simplifies the otherwise complex user setup required to capture and measure IBOC signals of interest. The auto-tune function will automatically set the frequency span, RBW, Average and Detector types, etc. It only takes seconds for the auto-tune function to display the correct measurement results.

The included Channel list feature enables users to easily create and recall setup and measurement parameters for single or multiple broadcast frequencies and channels. The user no longer needs to spend time remembering numerous channel setups but can simply load the desired channel from the list to start a measurement. The Channel list can be loaded, copied and deleted.

N9340B is the industry's first handheld spectrum analyzer with a dedicated IBOC measurement mode. The option IBC is not available as an upgrade and must be ordered at the time of instrument purchase.



IBOC-AM measurement with N9340B IBC



IBOC-FM measurement with N9340B IBC

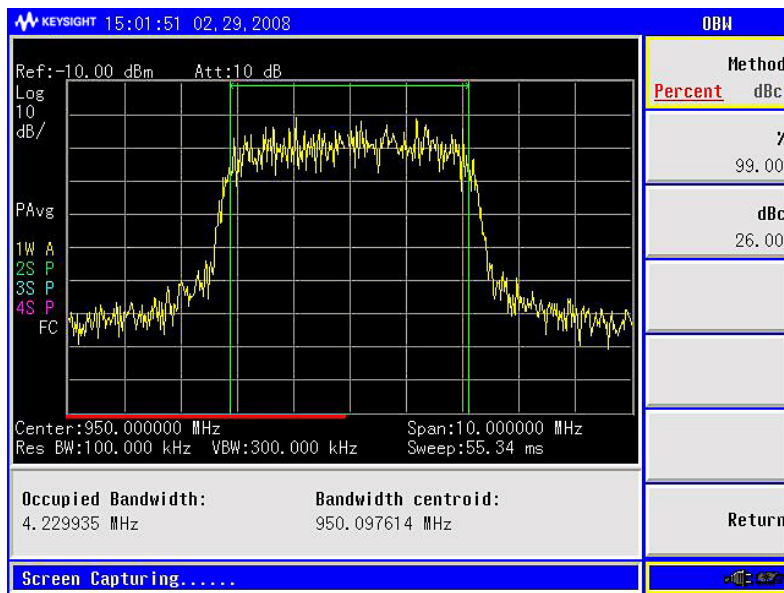
One-button measurement

The Keysight N9340B supports one-button measurements of occupied bandwidth, channel power and adjacent channel power ratio. This virtually eliminates set-up time in the field.

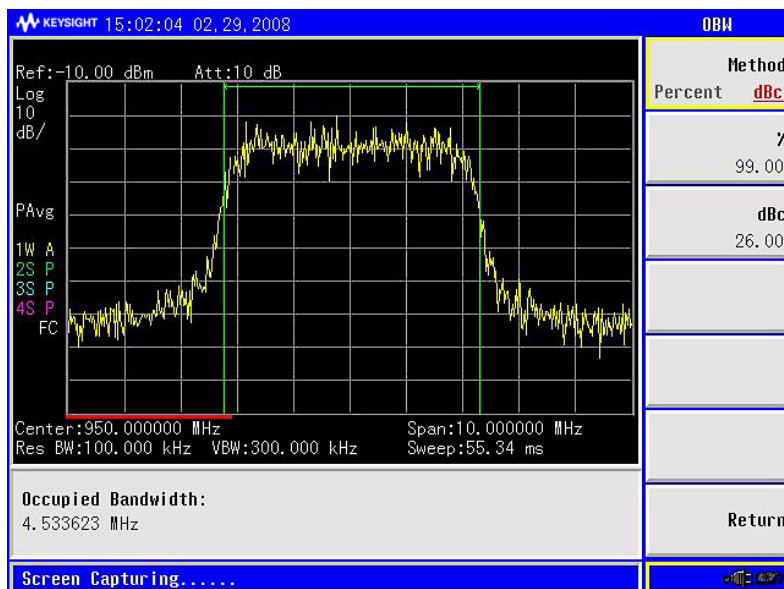
Occupied bandwidth (OBW)

An occupied bandwidth measurement integrates the power of the displayed spectrum and puts one pair of vertical lines at the frequencies between which the interested signal is contained.

An N9340B spectrum analyzer supports two ways to measure the occupied bandwidth, in percentage or in dBc.



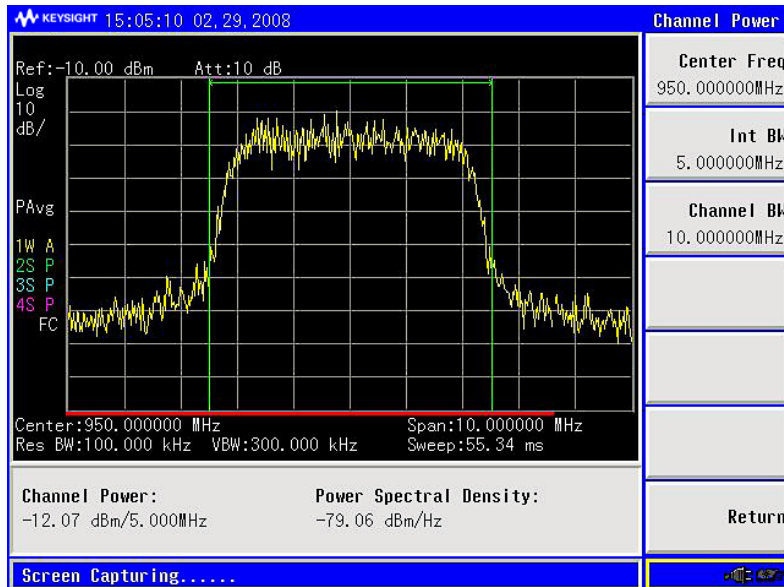
The occupied bandwidth measured in percentage.



The occupied bandwidth measured in dBc.

Channel power

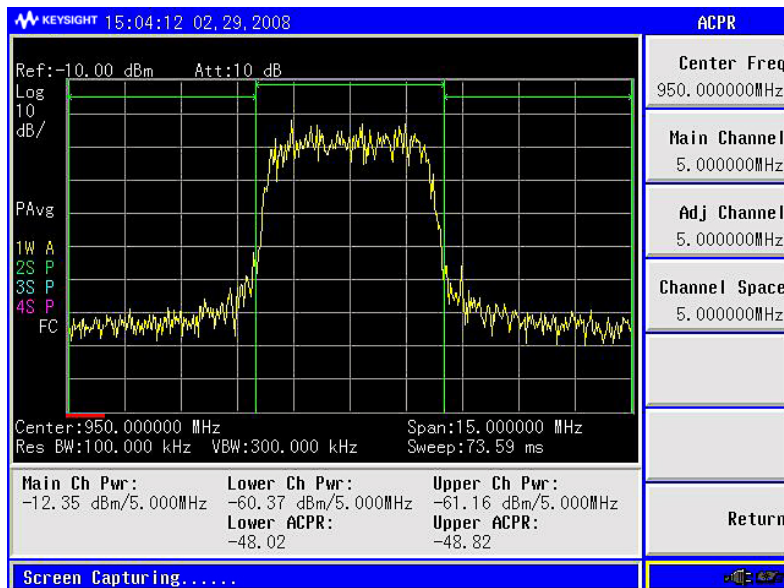
Use channel power to measure both power and power spectral density in a user-specified channel bandwidth. One pair of vertical lines on the display indicates the edges of the channel bandwidth.



It is quick and easy to set center frequency integration bandwidth, and channel bandwidth.

Adjacent channel power ratio (ACPR)

Wireless service providers need to minimize the interference caused by power leaking into adjacent transmit channels. Adjacent channel power ratio measurements help to check for signal leakage and the identification and control of sources of interference.



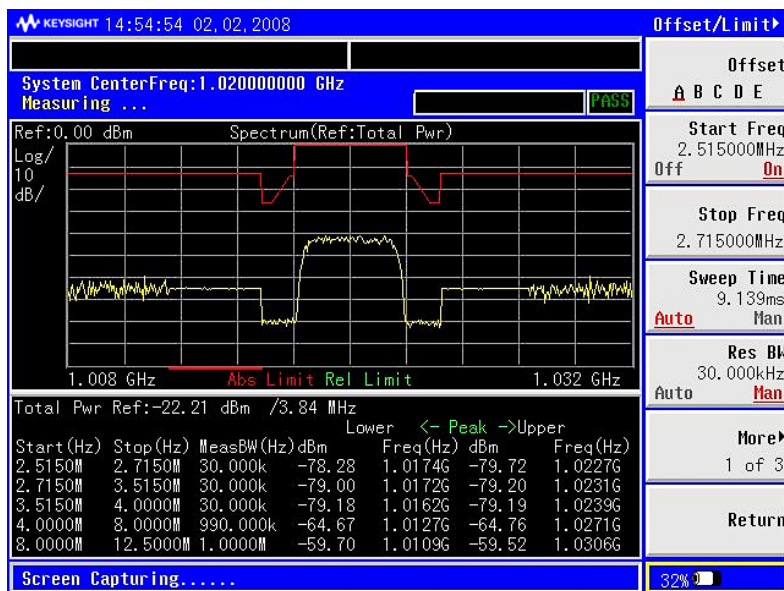
Center frequency, main channel bandwidth, adjacent channel bandwidth, and channel space can easily be set.

Spectrum emission mask (SEM)

The new N9340B adds Spectrum Emission Mask (SEM) as a standard feature. SEM is a mask for out-of-channel emissions measurement. The SEM is defined relative to in-channel power.

The user can set the parameters of the main channel, out-of-channel frequency bands, and the limit lines. Included is Pass/Fail testing for the overall spectrum emission mask and each individual out-of-channel frequency range. The N9340B will trigger the failure indicator once any measurement result violates the mask.

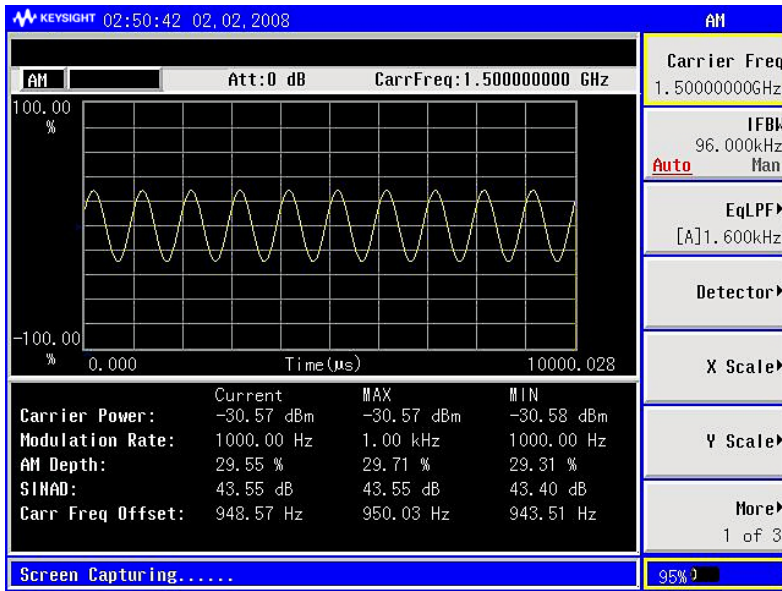
Also displayed are the main channel power and the power level metrics relative to in-channel power for each out-of-channel frequency range. The user can save the spectrum scan, the mask, the data or screenshot for later analysis and reporting.



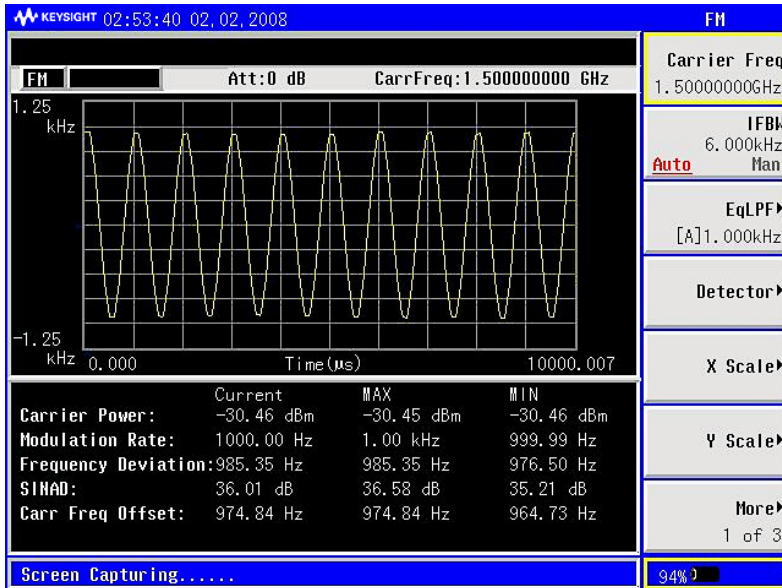
The spectrum emission mask shows the main channel power and the power level vectors relative to in-channel power for each out-of-channel frequency range.

AM/FM modulation analysis (Option AMA)

Optional AM/FM modulation analysis shows the metrics you need, including carrier power, modulation rate, AM depth/FM deviation, SINAD and carrier frequency offset. User definable limits provide Pass/Fail indicators in 4 cases: higher than carrier power, larger than AM modulation index or FM deviation, lower than AM modulation index or FM deviation, or larger than carrier frequency offset. The user can save the waveforms with metrics for reporting as well as the set-up parameters for future measurements or analysis.



The detailed metrics offer you the complete understanding of the AM.

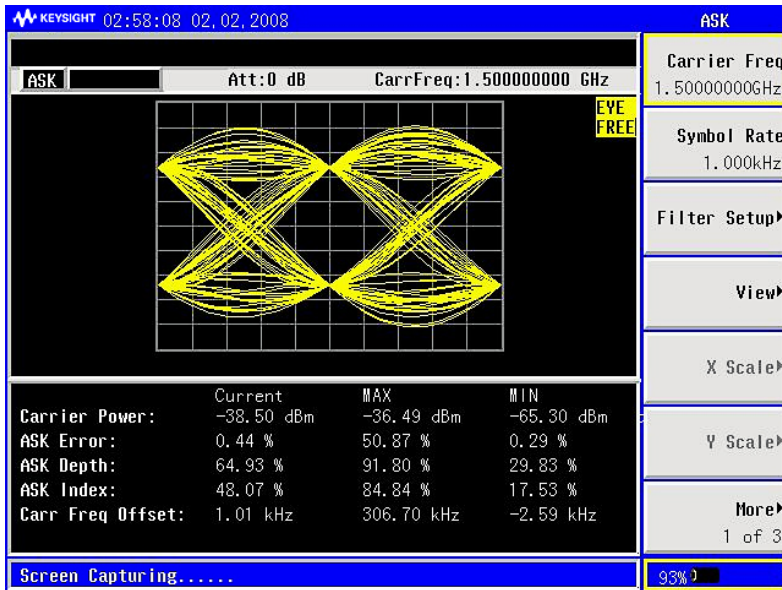


The detailed metrics offer you the complete understanding of the FM.

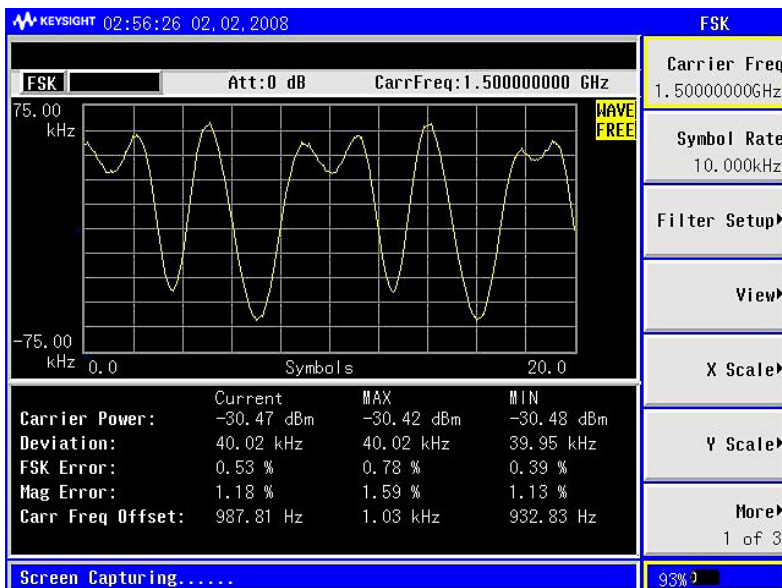
ASK/FSK modulation analysis (Option DMA)

Optional ASK/FSK modulation analysis is now available. Amplitude Shift Keying (ASK) is used in RFID and optical systems. Frequency Shift Keying (FSK) is used in many applications including cordless phone, paging system and RFID.

N9340B with option DMA supports 4 display modes: Symbol, Waveform, ASK/FSK Error, and Eye Diagram. Included is Pass/Fail testing of higher than carrier power, higher than ASK modulation depth/FSK frequency deviation, lower than ASK modulation depth/FSK frequency deviation and higher than FSK frequency deviation. The metrics you need are shown, including carrier power, ASK/FSK error, ASK depth/FSK frequency deviation, and ASK index etc. For reports and future measurements the waveform with metrics and setup parameters can be saved.



The Eye Diagram of ASK also shows the metrics with detailed parameters.

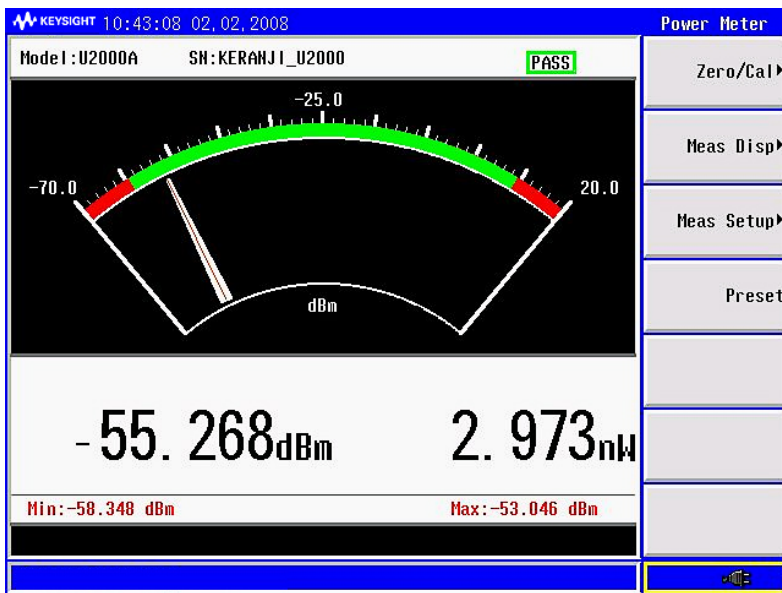


The Waveform of FSK also shows the metrics with detailed parameters.

High accuracy power measurement

The N9340B now supports high-accuracy, USB plug-and-play power measurements as standard when connected to an Keysight U2000 series USB power sensor. Make true average power measurements for all signal types with wide dynamic range up to 18 GHz with just the push of a button. The Keysight U2000 USB sensors require no external power supplies and with internal zeroing eliminate the need for external calibration. Without the need for additional boxes, the user can easily set up, calibrate and control the power meter/sensor via the analyzer's USB port. The N9340B can collect, display and save the power meter results.

The analyzer also provides Pass/Fail testing with user set upper and lower limits and a Pass/Fail indicator. Test results are shown in dBm and W when making absolute measurements and in dB and percentage when measurements are relative. Two display modes are available: Meter or the Chart mode to log power measurements over time.



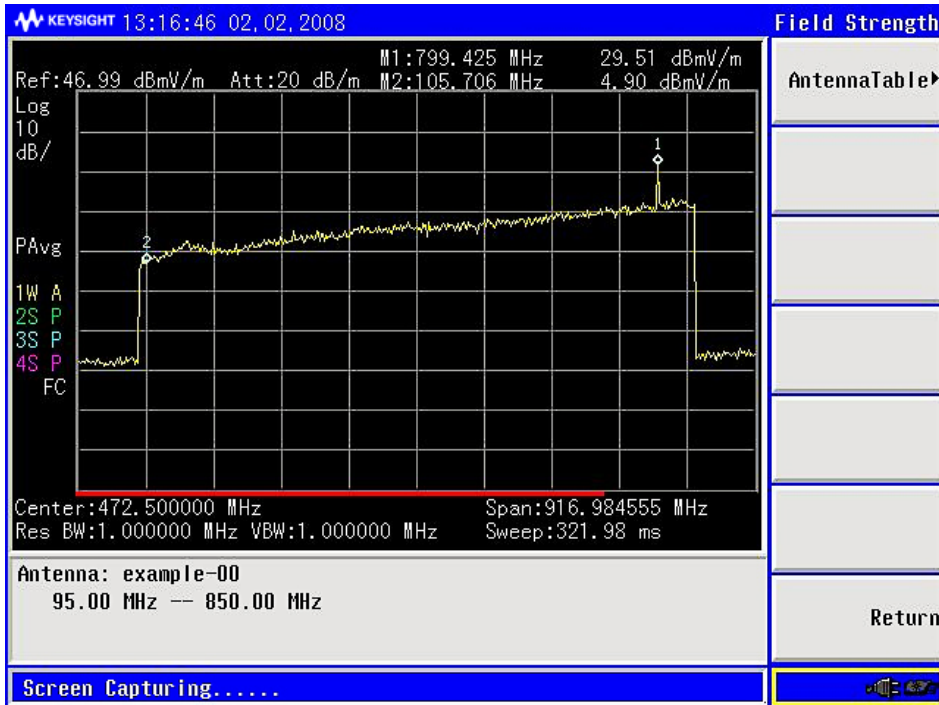
N9340B supports Meter and Chart mode to display the results of power measurements.



N9340B supports U2000 series USB power sensors for high accuracy power measurement.

Field strength measurement

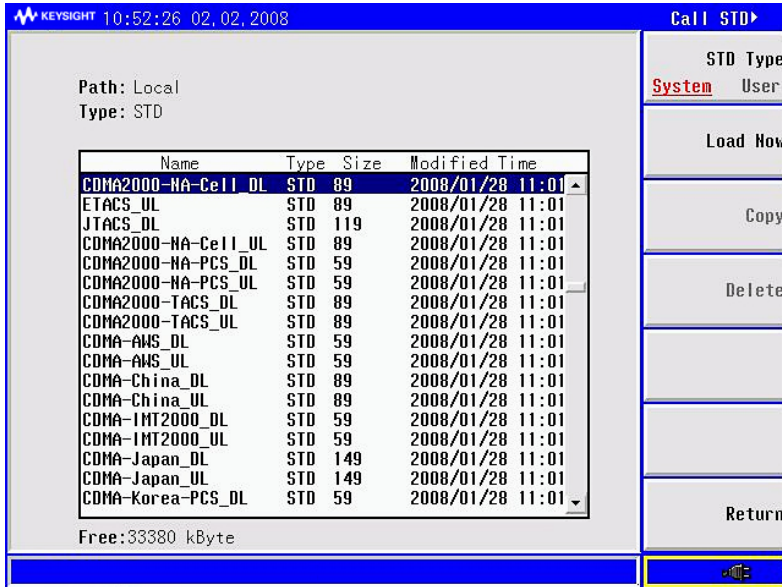
Electric field strength measurements are frequently required for field testing of transmitter and antenna coverage. Field strength measurements are now a standard function in the N9340B. Calibrated field strength measurements are easy to make once the antenna factors are loaded into the analyzer via the provided PC software based antenna template. Either field strength (in dB μ V/m, dBmV/m, or V/m) or power flux density (in dBm/m or W/m) can be displayed. With the amplitude offset function, the user can correct gain or loss. And finally together with the user-definable multi-limit line function, the N9340B offers the user quick and convenient field strength measurements and analysis.



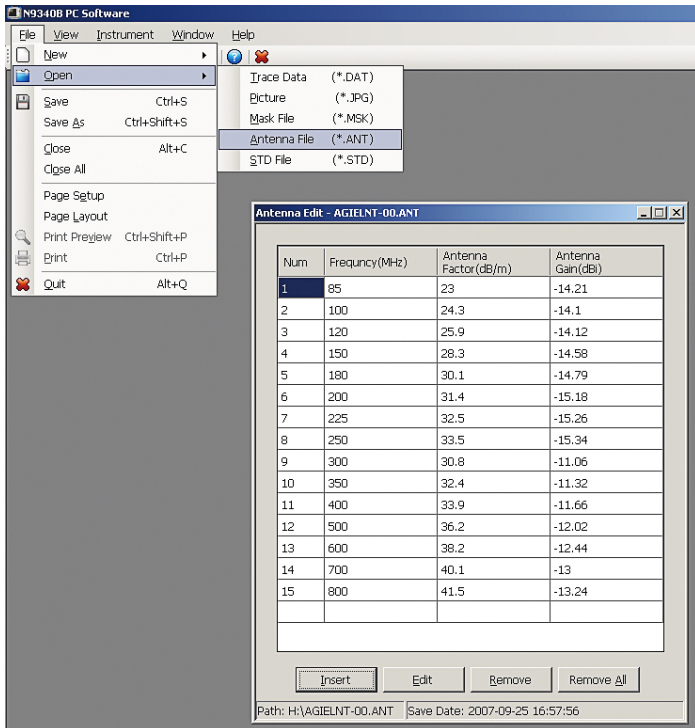
The field strength measurement automatically takes into the account of the antenna factor. The antenna table is definable by the standard N9340B PC software.

Channel table

For the users who prefer to tune the spectrum analyzer according to channel numbers rather than center frequency, you will find the new Channel Table feature easy-to-use. The Channel Table includes the major wireless communication standards, such as AMPS, GSM/EDGE/GPRS, CDMA, CDMA2000 etc. The Channel Table can also be edited by the user with the included N9340 PC Software. The revised Channel Table can be downloaded to the analyzer via a PC USB cable or a USB memory stick.



The channel table offers the ability to tune N9340B according to channel numbers.



The channel table is editable by N9340B PC software.



A standard soft carrying case provides further protection for your analyzer.

N9340B optimized usability to enhance field test productivity

- 6.5" TFT screen with bright display for use indoors and outdoors
- Back-lit keys for night use
- Four-hour battery life
- Modern USB and LAN connectivity for data transfer and remote control
- Multi-language User Interface
- Rugged design, MIL-PRF 28800F Class 2 compliance

See traces clearly indoors and outdoors

As with all the newest Keysight portable field equipment, operating under challenging bright sunlight or other difficult natural lighting conditions is no problem. The unusual 6.5" TFT display with resolution of 640 x 480 pixels provides a superior, bright and clear trace for indoor and outdoor use. There is no need to operate in the shade.

Back-lit keys for night use

The N9340B is installed with back-lit keys for night use. The user can see the keys clearly even in darkness. The user can adjust the brightness of keys and the duration of the key light. It offers the user the ability to easily operate N9340B at night.

Built-in light sensor

The N9340B is installed with a light sensor in the front panel. The light-sensor can be activated to adjust the display brightness to adapt to changing lighting conditions.

Long battery life

Testing in the field often means operating away from main power supplies. Batteries need to have the longest possible operating time before recharging. You'll find an Keysight N9340B analyzer has superior power management, providing an impressive 4-hour battery operating time. It's easy to operate for an entire day in the field. There is an advanced, in-built battery management system. This helps extend the useful battery operating time typically up to four hours. With just one battery and a spare, or a quick recharging from any vehicle using the supplied auto-lighter charger, you are able to operate for an entire day away from a mains power source.

Modern USB and LAN connectivity

Remote control N9340B via SCPI over USB/LAN is now available!

Detailed analysis of results in the field is not Remote control N9340B via SCPI over USB/LAN is now available! always convenient or possible. You will need to store the results for later investigation. N9340B supports USB memory stick for data storage and retrieval. It makes it easy to transfer and safeguard your measurement data. Connecting to a PC is simple and data transfer is fast via the USB cable. In test lab and bench-top use, the USB/LAN interface and PC software also support PC remote control of Keysight's N9340B spectrum analyzer. This allows appropriate use of a large format PC screen. Windows *-compatible software provides automatic storage of selected data and graphics.

Tough enough for the military

You will find that this Keysight analyzer is tough enough for military applications. Apart from its generally compact and rugged construction, the large rubberized grips wrap around both ends, providing additional robust protection from rough handling. The sealed keypad and screen are moisture resistant and dust proof. Of course, there is a protective carrying case that provides further protection for your analyzer.

Multi-language user interface

Users around the world will find operating Keysight N9340B is easy. In addition to English, there are ten more user-selectable, on-screen languages, including Chinese, Japanese, Korean and a number of European languages (see Specifications – General).



N9340B supports remote control via SCPI over USB and LAN.

Specifications

Specifications apply under the following conditions:

- After a warm-up time of 30 minutes, and at least two hours of operation or storage at operating temperature.
- Within a valid calibration period
- Data with no given tolerances are typical values only. Data designated as 'typical' is not covered by the product warranty.

Frequency		Supplemental information
Frequency		
Frequency range	100 kHz to 3 GHz (tunable to 9 kHz)	AC coupled
Internal 10 MHz frequency reference accuracy		
Aging rate	± 1 ppm/year	
Temperature stability	± 2 ppm	0 °C to 30 °C
	In addition +2 ppm/10 °C	30 °C to 50 °C
Frequency readout accuracy with market (Start, stop, center, marker)		
Marker resolution	(frequency span)/(number of sweep points - 1)	
Uncertainty	± (frequency indication × frequency reference uncertainty +1% × span + 20% × resolution bandwidth + marker resolution +1 Hz)	
Frequency reference uncertainty = (aging rate x period of time since adjustment + temperature stability)		
Marker frequency counter		
Resolution	1 Hz	
Accuracy	± (marker frequency × frequency reference uncertainty + counter resolution)	RBW/span ≥ 0.02; marker level to displayed Noise level > 25 dB; frequency offset 0 Hz
Frequency reference error = (aging rate x period of time since adjustment + temperature stability)		
Frequency span		
Range	0 Hz (zero span), 1 kHz to 3 GHz	
Resolution	1 Hz	
Accuracy	± span/(sweep points - 1)	
SSB phase noise		
Carrier offset		
30 kHz	< -87 dBc (1 Hz)	20 °C to 30 °C; Typical
100 kHz	< -100 dBc (1 Hz)	fc = 1 GHz; RBW 100 Hz; VBW 10 Hz; RMS detector
1 MHz	< -120 dBc (1 Hz)	
Resolution bandwidth (RBW)		
-3 dB bandwidth	30 Hz to 1 MHz	1- 3 - 10 sequence
Accuracy	± 5%	Nominal
Resolution filter shape factor	< 5 : 1	60 dB/3 dB bandwidth ratio; Nominal; Digital, approximately Gaussian shape
Video bandwidth (VBW)		
-3 dB bandwidth	30 Hz to 1 MHz	1- 3 - 10 sequence
Accuracy	± 5%	Nominal

Specifications (continued)

Amplitude		Supplemental information	
Measurement range			
	Displayed average noise level (DANL) to +20 dBm		
Input attenuator range	0 to 51 dB, in 1 dB steps		
Maximum safe input level			
Average continuous power	≥ +33 dBm; 3 minutes maximum. Nominal	Input attenuator setting ≥ 20 dB (input protection switch active when input level > 33 dBm)	
DC voltage	50 VDC maximum		
Displayed average noise level			
Preamp off		Reference level ≤ -50 dBm	
100 kHz < fc ≤ 1 MHz	< -90 dBm		
1 MHz < fc ≤ 10 MHz	< -110 dBm		
10 MHz < fc ≤ 1.5 GHz	< -124 dBm	< -121 dBm when option IBC is installed	
1.5 GHz < fc ≤ 3 GHz	< -117 dBm	< -113 dBm when option IBC is installed	
fc = 50 MHz	< -126 dBm (Typical)		
fc = 1.9 GHz	< -122 dBm (Typical)		
Preamp on		Reference level ≤ -70 dBm	
100 kHz < fc ≤ 1 MHz	< -115 dBm		
1 MHz < fc ≤ 10 MHz	< -128 dBm		
10 MHz < fc ≤ 1.5 GHz	< -144 dBm	< -141 dBm when option IBC is installed	
1.5 GHz < fc ≤ 3 GHz	< -136 dBm	< -132 dBm when option IBC is installed	
fc = 50 MHz	-146 dBm (Typical)		
fc = 1.9 GHz	-146 dBm (Typical)		
RBW = 30 Hz; VBW = 3 Hz; input terminated 50 Ω; 0 dB attenuation; RMS detector; Trace average ≥ 40			
Level display range			
Log scale and units	1 to 10 dB/divisions in 1, 2, 5, 10 dB steps, 10 divisions displayed		
Linear scale and units	0 to 100%; ten divisions displayed dBmV, dBμV, V, mV, μV, W, mW		
Sweep (trace) points	461		
Number of markers	6		
Marker functions	Normal, frequency counter, noise marker, band power and AM/FM demod (tune and listen)		
Marker level readout resolution	Log scale	0.01 dB	
	Linear scale	≤ 1% of signal level	Nominal
Detectors	Normal, Positive Peak, Sample, Negative Peak, Average (Video, RMS, Voltage)		
Number of traces	4		
Trace functions	Clear/write, maximum hold, minimum hold, average		
Level measurement error	± 1.5 dB (excluding input VSWR mismatch) ± 0.5 dB, Typical	20 to 30 °C, peak detector, preamplifier off, input signal 0 dBm to -50 dBm, 20 dB input attenuation, frequency > 1 MHz, auto sweep time, RBW = 1 kHz, VBW = 1 kHz, trace average on to reduce noise	
Reference level			
Setting range	-100 to +20 dBm	Steps of 1 dB	
Setting resolution			
Log scale	0.1 dB		
Linear scale	1% of reference level		
Accuracy	0	Because reference level affects only the display not the measurement, it causes no additional error in measurement results from trace data markers	

Specifications (continued)

Amplitude (continued)		Supplemental information
RF Input VSWR (at tuned frequency)		
Attenuator setting 0 dB	< 1.8 : 1	10 MHz to 3.0 GHz, Nominal
Attenuator setting 10 dB	< 1.8 : 1	100 kHz to 10 MHz, Nominal
	< 1.5 : 1	10 MHz to 2.5 GHz, Typical
	< 1.8 : 1	2.5 GHz to 3.0 GHz, Typical
Attenuator setting 20 dB	< 1.6 : 1	100 kHz to 10 MHz, Nominal
	< 1.4 : 1	10 MHz to 3.0 GHz, Typical
Spurious response		
Second harmonic distortion	< -70 dBc	Mixer level = -40 dBm, frequency \geq 50 MHz
Third - order intermodulation (third order intercept)	+10 dBm, Typical	Third-order intermodulation products, 2 x -20 dBm, reference level -10 dBm, center frequency 300 MHz, frequency separation 200 kHz RF attenuation = 0 dB RF preamplifier = OFF
Input related spurious	< -70 dBc	-40 dBm signal at input mixer, carry offset > 1 MHz Exception: -60 dBc nominal (2005.35 MHz) with or option IBC
Inherent residual response	< -88 dBm	Input terminated and 0 dB RF attenuation, preamplifier off, reference level -30 dBm, $f >$ 30 MHz, RBW \leq 10 kHz
Sweep		Supplemental information
Sweep time		
Range	10 ms to 1000 s	Span \geq 1 kHz
	6 μ s to 200 s	Span = 0 Hz (zero span)
Sweep mode	Continuous; single	
Trigger source	Free run; video; external	
Trigger slope	Selectable positive or negative edge	
Trigger delay		
Range	6 μ s to 200 s	
Resolution	6 μ s	
Front panel input/output		Supplemental information
RF input		
Connector and impedance	Type -N female; 50 Ω	Nominal
10 MHz reference/External trigger input		
Reference input frequency	10 MHz	
Reference input amplitude	0 to + 10 dBm	
Trigger voltage	5 V TTL level	Nominal
Connector and output impedance	BNC female; 50 Ω	Nominal
Connectivity		
USB host	USB Type-A female, compatible with USB 2.0 full speed	
USB device	USB Type-mini AB female	
	Compatible with USB 2.0 full speed	
LAN	RJ-45, 10 Base-T	

Specifications (continued)

General		Supplemental information
Display		
Resolution	640 x 480 pixels	
Size and type	6.5 inch (170 mm) TFT color display	
Internal memory		
User memory		Able to store about 3,600 traces
Languages		
On-Screen GUI	English, Simplified Chinese, Traditional Chinese, French, German, Italian, Japanese, Korean, Russian, Spanish, Portuguese	
Power requirements and calibration		
Adaptor voltage	90 to 120 or 195 to 263 VAC, 50 to 60 Hz 12 to 18 VDC, < 55 W	Auto-ranging
Power consumption	13 W	Typical
Battery		
Operating time	4 hours	Tracking generator off
(fully charged battery)	3 hours	Tracking generator on
Charging time	3 hours	
Life time	300 to 500 charge cycles	
Warm-up time	30 minutes	
Environmental and size		
Temperature range	-10 to +50 °C	Operating (Battery: 0 to 50 °C)
	-40 to +70 °C	Storage (Battery: -20 to 50 °C)
Altitude	9,144 meters (30,000 feet)	Operating with battery
	3,000 meters (9,840 feet)	Operating with AC to DC adapter
	15,240 meters (50,000 feet)	Non-operating
Relative humidity	< 95%	
Weight	3.2 kg (7 lbs)	Net (shipping) approximately
		3.5 kg (7.7 lbs) with battery
Dimensions	318 × 207 × 69 mm	Approximately (W x H x D)

Specifications (continued)

Options		Supplemental information
Spectrogram Monitoring (Option INM)		
3 display modes	Spectrogram	
	Spectrum trace	
	Combination of spectrogram and spectrum trace in one screen	
Preamp off		Reference level ≤ -50 dBm
9 kHz < $f_c \leq 100$ kHz	< -117 dBm, Nominal	
10 MHz < $f_c \leq 12$ MHz	< -132 dBm, Nominal	
Preamp on		Reference level ≤ -70 dBm
100 kHz < $f_c \leq 1$ MHz	< -138 dBm, Nominal	
1 MHz < $f_c \leq 12$ MHz	< -140 dBm, Nominal	
Low frequency performance enhancement and AM/FM In-Band On-Channel IBOC Measurement (Option IBC)		
Frequency range		
AM channel	430 to 1800 kHz	According to IBOC (AM) requirement
FM channel	87.25 to 108.55 MHz	According to IBOC (FM) requirement
DANL	30 Hz RBW, 3 Hz VBW, 50 Ω termination on input, 0 dB attenuation, RMS detector, Trace average ≥ 40	
Preamp off		Reference level ≤ -50 dBm
9 kHz < $f_c \leq 100$ kHz	< -117 dBm, Nominal	
10 MHz < $f_c \leq 12$ MHz	< -132 dBm, Nominal	
Preamp on		Reference level ≤ -70 dBm
100 kHz < $f_c \leq 1$ MHz	< -138 dBm, Nominal	
1 MHz < $f_c \leq 12$ MHz	< -140 dBm, Nominal	
RF preamplifier (Option PA3)		
Frequency range	1 MHz to 3 GHz	
Gain	20 dB	Nominal
Tracking generator (Option TG3)		
Frequency range	5 MHz to 3 GHz	
Output level	0 to -25 dBm	1 dB steps
Output flatness	± 3 dB	Referenced to 50 MHz, 0 dBm
VSWR	< 2.0 : 1	Nominal
Connector and impedance	Type-N female, 50 Ω	

Specifications (continued)

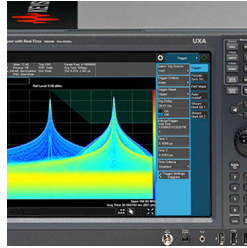
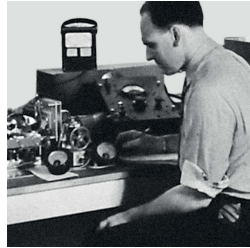
Demodulation		Supplemental information
Frequency range	10 MHz to 3 GHz	
Carrier power accuracy	± 2 dB	
	± 1 dB	Typical
Carrier power displayed resolution	0.01 dBm	
AM measurement		
Modulation rate	20 Hz to 100 kHz	
Accuracy	1 Hz, nominal	Modulation rate < 1 kHz
	< 0.1% modulation rate, nominal	Modulation rate > 1 kHz
Depth	5 to 95%	
Accuracy	$\pm 4\%$	Nominal
FM measurement		
Modulation rate	20 Hz to 200 kHz	
Accuracy	1 Hz, nominal	Modulation rate < 1 kHz
	< 0.1% modulation rate, nominal	Modulation rate > 1 kHz
Deviation	20 Hz to 400 kHz	
Accuracy	$\pm 4\%$	Nominal
ASK measurement		
Symbol rate range	200 Hz to 100 kHz	
Modulation depth/index		
Range	10% to 95%	
Accuracy	$\pm 4\%$ of reading nominal	
Displayed resolution	0.1%	
FSK measurement		
Symbol rate range	1 kHz to 100 kHz	
FSK deviation		
Range	1 kHz to 400 kHz	
Accuracy	$\pm 4\%$ of reading nominal	$B \geq 1$ and $B \leq 4$ B is the ratio of frequency deviation to symbol rate.
Displayed resolution	0.01 Hz	

Specifications (continued)

Model number	Description
N9340B	Handheld spectrum analyzer 100 kHz to 3.0 GHz Accessories supplied as standard with each Multi-language Quick Start Tutorial CD-ROM of the manual Soft carrying case
Options	
N9340B-INM	Extended spectrogram monitoring
N9340B-IBC	N9340B with low frequency performance enhancement and AM/FM In-Band On-Channel IBOC measurement
N9340B-PA3	3 GHz preamplifier
N9340B-TG3	3 GHz tracking generator
N9340B-AMA	AM/FM modulation analysis
N9340B-DMA	ASK/FSK modulation analysis
N9340B-1TC	Hard transit case
N9340B-1DN	Automotive 12 V DC charger
N9340B-BAT	Spare battery pack
N9340B-ADP	Spare AC/DC adaptor
N9340B-BCG	External battery charger
N9340B-TAD	Adaptor Type-N(m) 50 Ω to Type-N (f) 75 Ω DC to 1 GHz
N9340B-ABA	Manual – English
N9340B-AB2	Manual – Chinese
N9340B-ABJ	Manual – Japanese
Warranty	
Select coverage	
Included	3-year warranty (return to Keysight), standard
R-51B-001-5Z	5-year warranty assurance plan (return to Keysight): Priority warranty service includes one-time coverage for an EOS/ESD failure.
Calibration	
Select Keysight calibration plan	
R-50C-011-3	3-year calibration assurance plan (return to Keysight): Priority calibration service covering all calibration costs for 3 years; 15% cheaper than buying stand-alone calibrations.
R-50C-011-5	5-year calibration assurance plan (return to Keysight): Priority calibration service covering all calibration costs for 5 years; 20% cheaper than buying stand-alone calibrations.

From Hewlett-Packard through Agilent to Keysight

For more than 75 years, we've been helping you unlock measurement insights. Our unique combination of hardware, software and people can help you reach your next breakthrough. **Unlocking measurement insights since 1939.**



1939

THE FUTURE

myKeysight



Keysight Infoline

DEKRA Certified
ISO9001 Quality Management System