



TREND NETWORKS



NOW WITH
TOUCHSCREEN
(Plus & Pro)



NaviTEK NT

Copper and Fiber Network Troubleshooter

Test Equipment Depot - 800.517.8431 - 5 Commonwealth Ave, MA 01801 - TestEquipmentDepot.com

Depend On Us

NaviTEK NT

Network Troubleshooter

The NaviTEK NT is a network tester for troubleshooting and maintenance of active and passive copper and fiber networks. Incorporating an improved graphical interface NaviTEK NT allows network technicians to pinpoint and solve network connectivity issues faster than ever before. Subsequently, tests can be saved as pdf reports and shared with colleagues and clients using the free TREND AnyWare™ app.

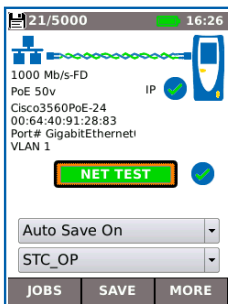


Addressing the needs of today's network technicians

Today, network technicians have a broad selection of software troubleshooting tools at their disposal and whilst useful in certain situations and environments they do have limitations. NaviTEK NT on the other hand offers a comprehensive suite of test and troubleshooting functionality only found on dedicated hand-held testers:-

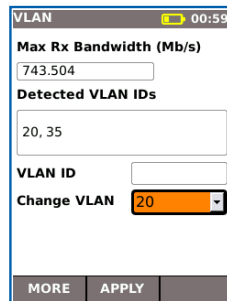
- Copper and fiber test interfaces
- Fast detection of link and IP information including duplex, speed, port ID, VLAN, DNS, DHCP, Gateway status and IP address
- Detects services such as ISDN, POTS and PoE
- Accurate wire mapping including length measurement and distance to fault
- Rugged, compact design permits use in confined spaces
- Not susceptible to virus and malware attack

Port & network summary info



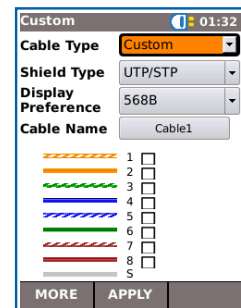
Press the Autotest button to display summary information and allow for detailed inspection of network parameters.

VLAN detection & operation



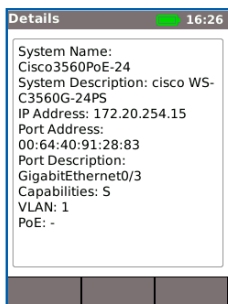
Automatic detection of VLAN ID's allows the user to configure NaviTEK NT for operation on a VLAN.

Custom Wiremap



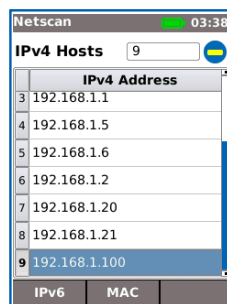
Use a list of wiremap templates for common Ethernet cable types as well as non-Ethernet cables, such as Profinet and ISDN.

CDP/LLDP/EDP port information



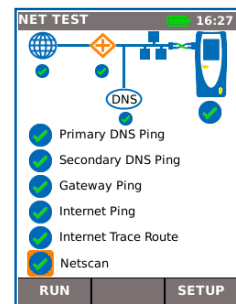
Show port information using Cisco Discovery Protocol (CDP), Link Layer Discovery Protocol (LLDP) and Extreme Discovery Protocol (EDP).

Netscan



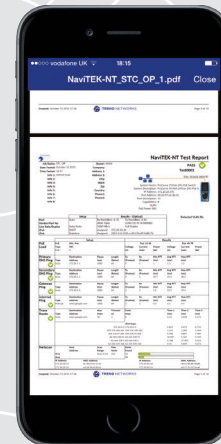
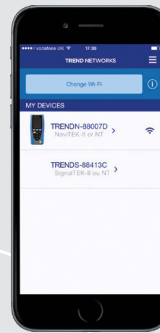
Display list of IP and MAC addresses of every device connected to the network.

Network Probe



View network illustration to verify test results of each network component.

Send test data from anywhere using the free app



Step 1

Test

- Create job folder
- Enter job site information
- Perform autotest on copper/fiber cabling and copper/fiber networks

Step 2

Connect

- Activate NaviTEK NT wireless hotspot
- Connect your mobile phone or tablet with the TREND AnyWARE App
- Transfer test reports to your mobile device
- View test reports

Step 3

Send

- Select reports (PDF or CSV) to send
- Select preferred transfer method - email, ftp, cloud storage etc.
- Send file
- Alternatively save test reports to USB key

Download the FREE app today



NavITEK NT

Performs tests for copper cabling and networks, including:

- Display network configuration - IPv4 / IPv6 compatible
- Advanced wiremap for miswires, split pairs, opens and shorts
- Distance to opens and shorts (TDR)
- PoE/PoE+ detection
- Tone generator for cable tracing
- Autotest button performs Ping and Traceroute test (network mode)
- Hub blink for port identification
- DHCP client
- Switch detection - 10/100/1000 Mb/s
- User-exchangeable RJ45 inserts
- Support for up to 12 wiremap remotes
- Backlit color screen

NavITEK NT Plus

All the features of NaviTEK NT as well as:

- Touchscreen
- Custom wiremap
- Autotest button performs a suite of network tests: Internet connectivity (Ping, DNS, Gateway, Traceroute) and NetScan
- Network Probe (NET TEST) provides detailed port and network information of each device
- Port identification using EDP/CDP/LLDP protocols
- VLAN detection and support
- Network scan (IP & MAC addresses of devices)
- PoE/PoE+ load test
- Traffic utilization bar graph
- Internal memory for 5000 test reports
- Generate test reports (PDF or CSV)
- TREND AnyWARE App

NavITEK NT Pro

All of the features of NaviTEK NT Plus as well as:

- Fiber optic cable interface
- Logon using the 802.1x protocol
- Optical power level and pass/fail indication with supported SFP
- Loopback mode for transmission testing on both copper & fiber interfaces

NavITEK NT

Network Troubleshooter

Test Reporting

NavITEK NT automatically generates test reports in PDF or CSV format.

The summary page of each report can be customised to include logo, company and operator details. Choose between 3 different reports that can show either passed, failed or all test reports in each report:

- Summary
- Brief
- Full (see example on the right side)

Ordering Information

Part No.	Kit Contents
R153001	NavITEK NT – Network Troubleshooter. 1 x NavITEK NT test unit, 1 x Remote unit No. 1, 4 x AA dry cell batteries (non-rechargeable), 2 x Patch cables - 30cm, Cat. 5e STP, 1 x Quick reference guide, 1 x Carry case
R151005	NavITEK NT Plus– Network Troubleshooter. 1 x NavITEK NT Plus test unit with touchscreen, 1 x Remote unit No. 1, 1 x Rechargeable Power Module, 1 x PSU EU/UK/US adapters, 2 x Patch cables - 30cm, Cat. 5e STP, 1 x USB Wi-Fi adapter, 1 x Quick reference guide, 1 x Carry case
R151006	NavITEK NT Pro – Network Troubleshooter. 1 x NavITEK NT Pro test unit with touchscreen, 1 x Remote unit No. 1, 1 x Rechargeable Power Module, 1 x PSU EU/UK/US adapters, 2 x Patch cables - 30cm, Cat. 5e STP, 1 x USB Wi-Fi adapter, 1 x Quick reference guide, 1 x Carry case

Optional Accessories

Part No.	Description
MGKSX1	1 x 850nm SX MM SFP + fiber patch cord accessories kit
MGKLX2	1 x 1310nm LX SM SFP + fiber patch cord accessories kit
MGKZX3	1 x 1550nm ZX SM SFP + fiber patch cord accessories kit
150058	RJ-45 replacement kit - Pack of 10 replacement inserts with extraction tool

Basic Specifications

Max. No. of Jobs	Max. No. of Stored Test	Max. Length	Battery Life	Dimensions per handset in mm	Weight per handset
50	5000	181 m/593 ft.	5 hours	175 x 80 x 40	0.4 kg



Setup		Results	
Port	Auto	Speed	1000 Mb/s
Line Rate	Auto	Full Duplex	Full Duplex
Duplex	Auto	Assigned	172.20.20.24
IPv4	Static	Stateless	2001:50:1001:cc00:216:6ff:fe8b:7d

Test	Setup	Results
POE Load	Port	Pair 13-56
	Type	Power (W)
Primary DNS Ping	Type	Min RTT (ms)
	Destination Address	Avg RTT (ms)
Secondary DNS Ping	Type	Min RTT (ms)
	Destination Address	Avg RTT (ms)
Gateway Ping	Type	Min RTT (ms)
	Destination Address	Avg RTT (ms)
Internet Ping	Type	Min RTT (ms)
	Destination Address	Avg RTT (ms)
Trace Route	Type	Time 1 (ms)
	Destination Address	Time 2 (ms)
Netscan	Host Address	IP Address
	Subnet Mask	MAC Address



Apple and the Apple logo are trademarks of Apple Inc., registered in the U.S. and other countries. App Store is a service mark of Apple Inc.
Android is a trademark of Google Inc.
All Rights Reserved. TREND, TREND NETWORKS, NavITEK and the TREND AnyWARE logos are trademarks or registered trademarks TREND NETWORKS.

Specification subject to change without notice. E&OE
© TREND NETWORKS 2020
Publication no.: 161867 rev. 3