

VOLTAGE TESTERS

Klein Tools Offers a Range of NCVT's to Suit your Application

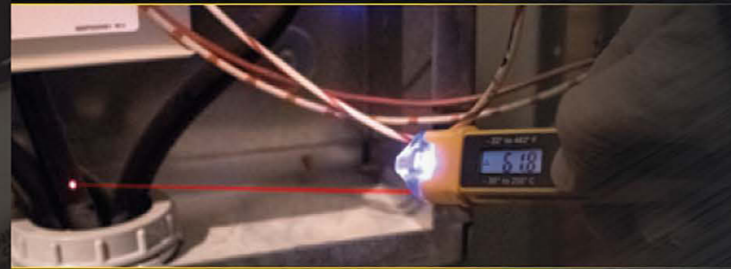
Our NCVT products are lightweight, compact tools with pocket clips to provide quick access at any jobsite. Testers deliver simultaneous visual and audible voltage indicators when AC voltage is detected. Meets CAT IV 1000V safety standard. Comes with 2x AAA batteries and auto power-off feature conserves and extends battery life. Perfect for working on sites from small residential developments to large-scale commercial projects.



NCVT-1

DETECTS: 50-1000V AC

Detect AC voltage in cables, cords, circuit breakers, lighting fixtures, switches, outlets and wires.



NCVT-4IR

DETECTS: 12-1000V AC

Designed specifically for HVAC applications. This 4:1 distance-to-spot ratio IR thermometer measures from -22 to 482° F (-30 to 250° C). Use convenient laser pointer to target measurement area for temperature measurement.



NCVT-5A

DETECTS: 12-1000V AC and 70-1000V AC

Select between dual ranges for optimal testing. Select 12 to 1000V AC which is perfect for low voltage systems such as doorbells, environmental control or irrigation systems, or select 70 to 1000V AC which is perfect for detecting systems such as electrical mains supply. Bright integrated laser pointer identifies objects of interest at distance on the jobsite.



NCVT-6

DETECTS: 12-1000V AC

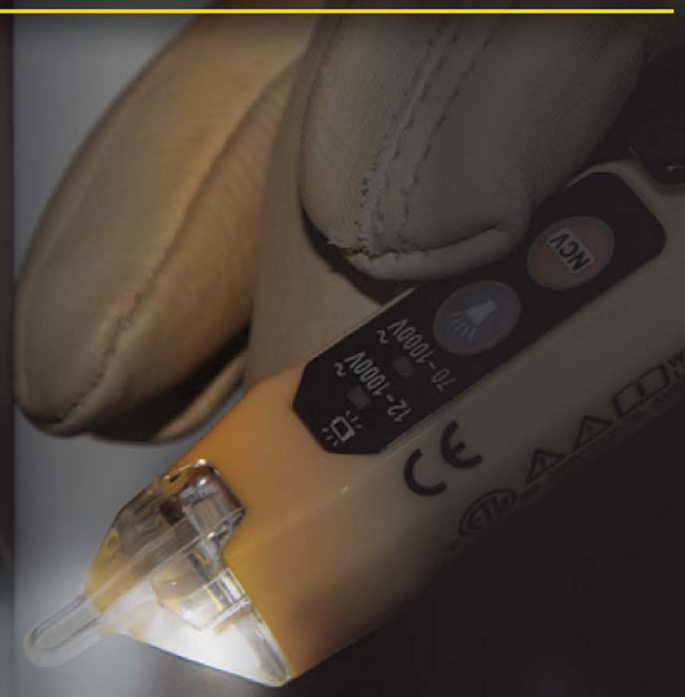
Incorporates a 66-Foot (20 m) Laser Distance Meter that can measure in meters, inches with decimals, inches with fractions, feet with decimals, or feet with fractions. The laser distance meter functions independently from the NCVT with a simple-to-use intuitive interface.

NON-CONTACT



NCVT-2P

Dual Range Non-Contact Voltage Tester



NCVT-3P

Dual Range Non-Contact Voltage Tester with Flashlight

Cat. No.	UPC# 0-92644+	Batteries	Length	Width	Depth	Weight (oz.)
NCVT-1	69000-6	2 x AAA	5.50" (14.0 cm)	0.72" (1.8 cm)	1.00" (2.5 cm)	0.8 oz (22.7 g)
NEW NCVT-2P	69232-1	2 x AAA	5.83" (14.8 cm)	0.86" (2.2cm)	1.09" (2.8 cm)	1.7 oz (48.1 g)
NEW NCVT-3P	69323-6	2 x AAA	5.70" (14.5 cm)	0.93" (2.4 cm)	1.09" (2.8 cm)	1.7 oz (48.1 g)
NCVT-4IR	69061-7	2 x AAA	6.25" (15.9 cm)	1.19" (3.0 cm)	1.25" (3.2 cm)	2.0 oz (57.0 g)
NCVT-5A	69294-9	2 x AAA	6.00" (15.2 cm)	1.16" (2.9 cm)	0.96" (2.4 cm)	1.5 oz (43.0 g)
NCVT-6	69225-3	2 x AAA	6.45" (16.4 cm)	1.32" (3.4 cm)	1.21" (3.1 cm)	2.5 oz (72.0 g)



See our complete line of Test & Measurement Products
www.kleintools.com



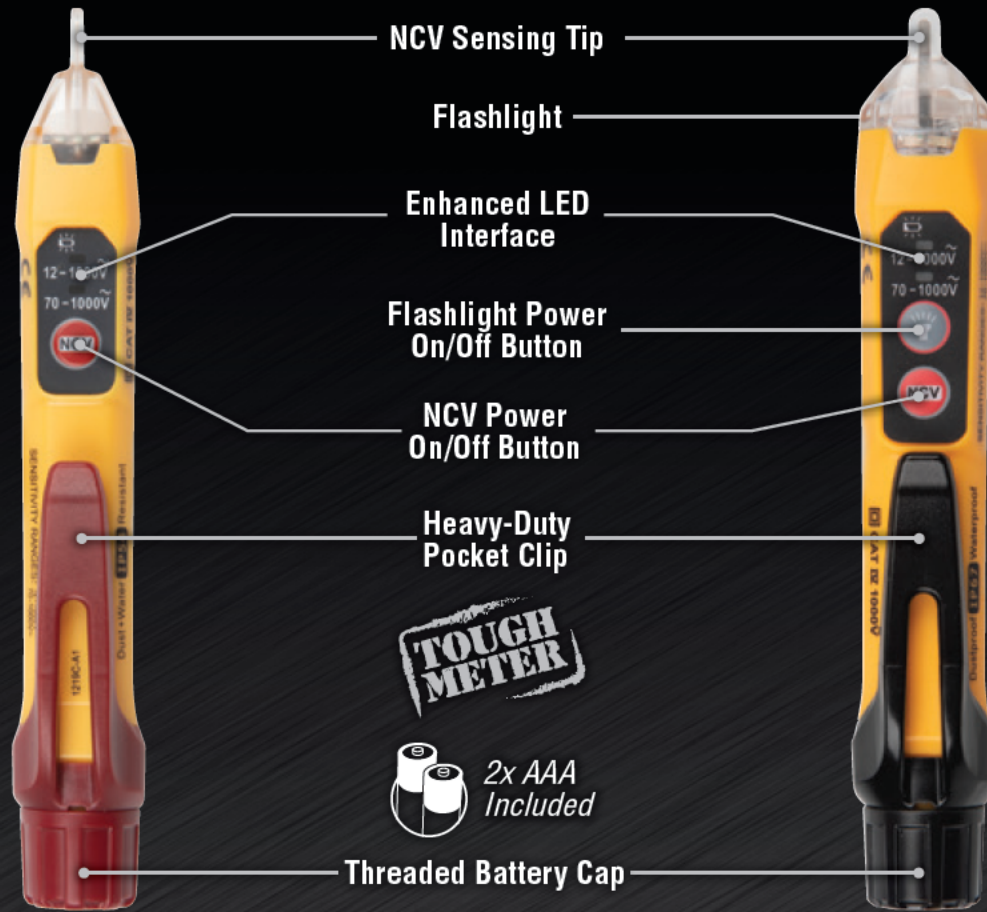
© 2020 Klein Tools, Inc.
 Lincolnshire, IL 60069-1418
 82909 Rev. 05/20 A

NCVT-2P

DUAL RANGE NON-CONTACT VOLTAGE TESTER

The **NCVT-2P** is a dual range non-contact voltage tester. The NCVT detects voltage from 70 to 1000V AC (in Range 1) or 12 to 1000V AC (in Range 2). Updated screw-cap battery compartment, heavy-duty pocket clip, and recessed buttons increase product durability. Enhanced LED interface makes the product easy-to-understand; light indicator clearly marks range being used for testing.

70 – 1000V AC
DUAL-RANGE
 12 – 1000V AC



NCVT-3P

DUAL-RANGE NON-CONTACT VOLTAGE TESTER WITH FLASHLIGHT

The **NCVT-3P** is a dual range non-contact voltage tester with an integrated flashlight that can be used independent of the voltage detection function. The NCVT can be set to detect voltage from 70 to 1000V AV (in Range 1) or 12 to 1000V AC (in Range 2). Enhanced LED interface makes the product easy-to-understand; light indicator clearly marks range being used for testing.

70 – 1000V AC
DUAL-RANGE
 12 – 1000V AC



NCVT-2P	FEATURES	NCVT-3P
•	Enhanced LED Interface	•
•	Dual Range	•
•	TEST Self-Test Function	•
•	Threaded Screw Cap	•
•	Heavy-Duty Pocket Clip	•
Range 1: 70-1000V AC Range 2: 12-1000V AC	V Voltage (Volts)	Range 1: 70-1000V AC Range 2: 12-1000V AC
IP54	Ingress Protection	IP67
CAT IV 1000V, CE	Safety	CAT IV 1000V, CE
50-500Hz	Hz Frequency Range	50-500Hz
•	Audible and Visual Alarms	•
•	APO Auto-Power Off	•
•	Flashlight	•
2 x AAA	Batteries Included	2 x AAA

QUICK START GUIDE	RANGE	INDICATORS	POWER – ON	12 – 70V AC	70 – 1000V AC
	Range 1 70 – 1000V	Visual on Tip	Green Light	No detection in this range	Red Light
		Visual on Tester	Red Light	No detection in this range	Red Light
Range 2 12 – 1000V	Audible	Single Beep	No detection in this range	Continuous Beep	
	Visual on Tip	Green Light	Blue Light	Red Light	
	Visual on Tester	Blue Light	Blue Light	Blue Light	
	Audible	Single Beep	Pulsing Beep	Continuous Beep	

