

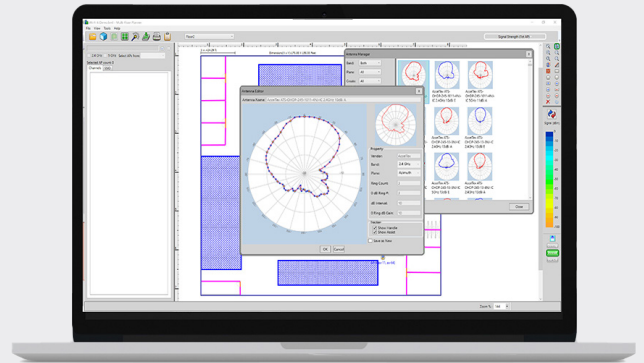
# AirMagnet® Planner

## Wireless Network Planning Tool

### Overview

Haphazard planning of a wireless deployment can lead to overspending, as well as underserved and less-than-thrilled end-users. AirMagnet Planner is a Wi-Fi network planning tool that saves time, money, and frustration by accounting for building materials, obstructions, access point configurations, antenna patterns and a host of other variables to provide a predictive map of Wi-Fi signal and performance, before the network or physical building is constructed.

- Plan and design Wi-Fi 6/6E networks without physically rolling out any APs
- Optimize AP count and layout for maximized coverage and performance by modeling building construction materials/obstructions and AP placement
- Reduce time spent planning by quickly importing walls from CAD floorplans
- Estimate Wi-Fi deployment budgets; generate installer-ready BOM reports
- Plan migration strategies as new users or technologies are introduced



### Key Features

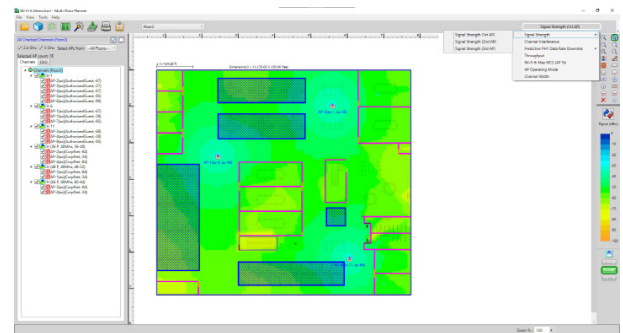


#### Sophisticated WLAN Modeling

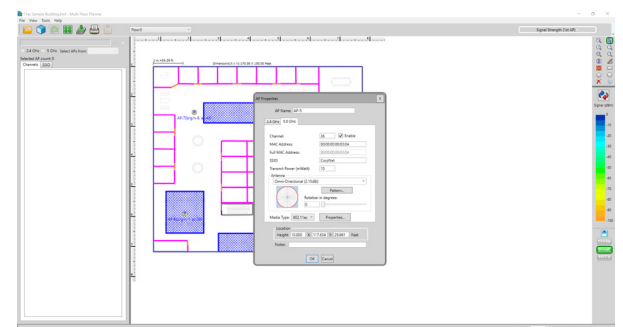
AirMagnet Planner makes it easy to build a detailed model of any wireless environment - even before the network is deployed or the building is constructed. Simply load in a map of the location and use the built-in library of walls, doors, and windows to precisely match the building's characteristics.

AirMagnet Planner allows users to add APs to any location and experiment to find the ideal placement within the environment, based on their requirements. AirMagnet Planner also provides independent settings for 2.4 GHz, 5 GHz, and 6 GHz radios. Users can set the AP channel, IP address, transmit power, antenna type, orientation, height, and 802.11 specifications. After the planning session is complete, users can generate a professional Bill of Materials report that includes the necessary information to properly install the network. Along with RF coverage information, users can access performance metrics such as data rates and throughput.

An "advisor feature" is included with AirMagnet Planner to automatically place APs on-site floor plans. Users can specify the minimum signal coverage expected, the transmit power, the media type of the AP, and more while marking Wi-Fi coverage areas and areas where APs cannot be placed.



Automated WLAN Modeling



Set AP Details



## Ordering Guide

Model Number/Name	Description
AM/A4012G	AirMagnet Planner (Standalone)
AM/A4018G	AirMagnet Survey PRO (includes Planner)

## Support

Model Number/Name	Description
AM/A4012G-1YS	1 year AllyCare Support for AirMagnet Planner - AM/A4102G
AM/A4012G-3YS	3 year AllyCare Support for AirMagnet Planner - AM/A4102G
AM/A4018G-1YS	1 year AllyCare Support for AirMagnet Survey PRO (includes Planner) - AM/A4018G
AM/A4018G-3YS	3 year AllyCare Support for AirMagnet Survey PRO (includes Planner) - AM/A4018G

**NOTE:** The first year of AllyCare support is required for all AirMagnet products.

## System Requirements

### Laptop/Notebook/PC/Tablet PC

Operating Systems: Microsoft Windows 10 Pro/Enterprise 64-bit or Microsoft Windows 11 Pro/Enterprise 64-bit.

Intel® Core™ i5 2GHz (Intel® Core™ i7 or higher recommended)

4 GB (8 GB or higher recommended)

800 MB free hard disk space

A site map in a format supported by AirMagnet Planner (supported formats are: .bmp, .dib, .dwg, .dxf, .emf, .gif, vsd, .jpg, .wmf, .vdx or .png)

### Apple® Macbook® PRO

Operating Systems: MAC OS X v10.5 (Leopard™) or higher running a supported Windows OS (as noted under Laptop/Notebook PC/Tablet PC section) using Boot Camp®

Intel® Core™ i5 2GHz (Intel® Core™ i7 or higher recommended)

4 GB (8 GB or higher recommended)

800 MB free hard disk space

A site map in a format supported by AirMagnet Planner (supported formats are: .bmp, .dib, .dwg, .dxf, .emf, .gif, vsd, .jpg, .wmf, .vdx or .png)

©2023 NetAlly®, LLC. Third-party trademarks mentioned are the property of their respective owners.

## Premium Customer Services



AllyCare is a comprehensive support and maintenance service for NetAlly's Network Tools and AirMagnet® software that offers significant value over standard warranty. Membership of AllyCare can be purchased as either a 1-year membership or the value-added 3-year membership rate.

[support.netally.com](https://support.netally.com)



Test Equipment Depot - 800.517.8431 - [TestEquipmentDepot.com](https://TestEquipmentDepot.com)



simplicity • visibility • collaboration