



VGA Resolution Probe

P16181HP



99 Washington Street
Melrose, MA 02176
Phone 781-665-1400 Toll
Free 1-800-517-8431

Visit us at www.TestEquipmentDepot.com

Ideal for capturing high-quality (640 x 480 pixel) video and images of hard-to-reach or hard-to-see areas and equipment. Light boost, anti-reflection and image rotation functions extract clear images from even the darkest spaces.

Features & Specifications:

- Six super-bright white LEDs—four front-facing, two side-facing—support 640 x 480 pixel (VGA) resolution video and still images
- 39 in. (1m) long, 0.22 in. (5.5mm) diameter probe goes deep into tight spaces
- Light boost, anti-reflection and 90° image rotation buttons on handle
- Superior optics tailored for close-focus viewing from 0.4 in. to 12 in. (10 to 300mm) over 60° (diagonal) field of view
- 0.78 in. (20mm) long stainless steel camera head is immune to bathroom toilet cleaner, unleaded gasoline, diesel fuel, brake/transmission fluid and machine oil
- Probe is waterproof to IP67 standard
- 110° mirrored viewing tip
- **Dimensions of Handle:**
5.47 x 1.38 x 1.26 in. (139 x 35 x 32mm)
- **Weight:** 7.76 oz. (220g)

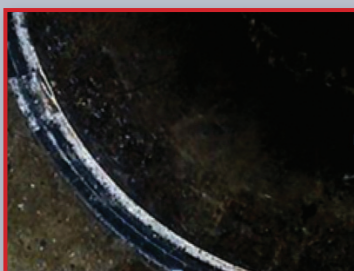


Compatible with General's DCS1600, DCS1600ART and DCS1800 high-performance video borescope inspection systems, H16 handheld recording console and DCS1800-TR wireless probe handle/controller

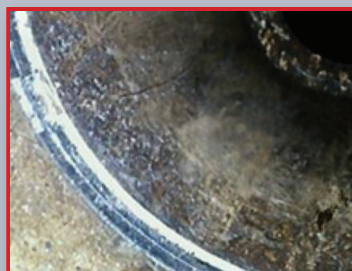
No. P16181HP



The VGA probes' four forward-facing LEDs and two rear-facing LEDs make the darkest crawl space as bright as day



Before Boosting



Brighter Image after Boosting

The light boost function of a VGA resolution probe