

99 Washington Street
Melrose, MA 02176
800.517.8431
TestEquipmentDepot.com

FLUKE®

pc3000 FC

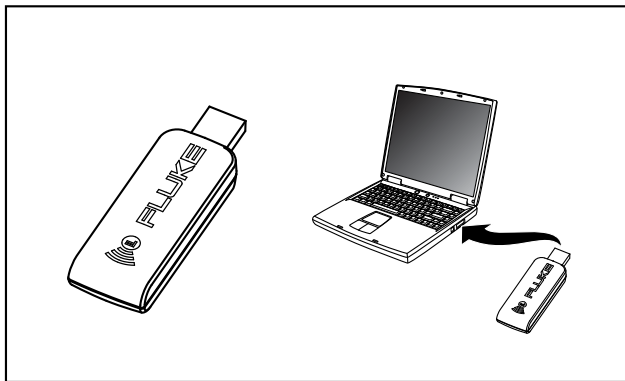
PC Adapter

Instruction Sheet

Introduction

The pc3000 FC PC Adapter is a USB device that receives and transmits a radio signal between a Fluke Connect 3000 Series Wireless Module and a computer. The Fluke Connect sw3000 application software uses the adapter to exchange data wirelessly with 3000 FC modules.

Fluke sw3000 FC is a Windows-based software application that allows real-time display measurements from up to six 3000 FC modules for each PC adapter. The software shows real-time graphs of individual module readouts. A user can download logged data and adjust the module parameters and settings, such as, module name, logging interval, and logging duration.






gxm10.eps

Software Requirements:

- Windows XP or later.
- Fluke pc3000 FC PC Adapter must be connected to the USB port to enable communication between the 3000 FC modules and the software application.
- sw3000 FC supports up to two PC adapters.

Safety Information

Symbols

Symbol	Description
	Conforms to European Union directives
	Conforms to relevant Australian EMC requirements
	This product complies with the WEEE Directive (2002/96/EC) marking requirements. The affixed label indicates that you must not discard this electrical/electronic product in domestic household waste. Product Category: With reference to the equipment types in the WEEE Directive Annex I, this product is classed as category 9 "Monitoring and Control Instrumentation" product. Do not dispose of this product as unsorted municipal waste. Go to Fluke's website for recycling information.

Specifications

Operating Temperature	10 °C to 30 °C
Storage Temperature	-40 °C to 60 °C
Relative Humidity	0 % to 45 % (non-condensing)
Computer Interface	USB 1.1/2.0
Wireless Frequency	2.4 GHz ISM Band 20 meter range
Size (H x W x L)	1.3 cm x 2.5 cm x 7.9 cm (0.5 in x 1.0 in x 3.1 in)
Weight	20 g (0.7 oz)
Connection to PC	USB Type A