

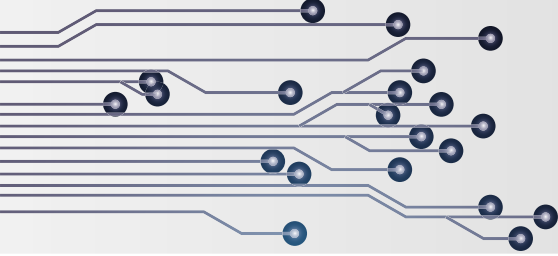


**PowerSight**



# PK4564 Series Power Quality Analysis Systems

**PK4564 PK4564-  
PRO PK4564-  
PRO+**



# What's Included

## PK4564

- **PS4550 Power Quality Analyzer (with expanded memory)**
- 4 Deluxe Voltage Leads
- 4 Flexible 6,000A Current Probes
- Hard Shell Carrying Case
- SD Memory Card
- Wall Charger (120V or 230V)
- 1-Year Deluxe Warranty
- PowerSight Manager Advanced Software



## PK4564-PRO

- Everything in the PK4564, plus
- + **Mini Line-to-DC Converter** ▼
- + USB Communications Cable
- + USB Bluetooth Adapter

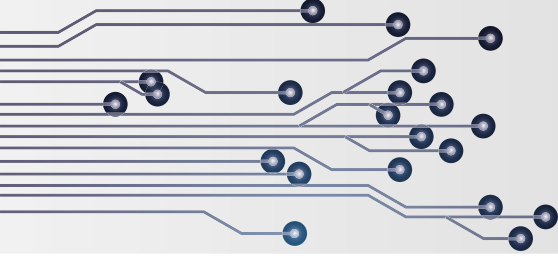
## PK4564-PRO+

- Everything in the PK4564-PRO, plus
- **Substitute Carrying Case for Weatherproof Carrying & Operating Case** ▼
- 2-Year Deluxe Warranty instead of 1-Year



**Mini  
Line-to-DC  
Converter**





# Features

The PK4564 series of power quality analysis systems has the essentials for comprehensive power quality studies, energy audits, load studies, harmonic analysis, and more. Wide-range flexible current probes allow you to get into tight and confined spaces, wrap around large conductors, and measure almost any AC circuit that comes your way.

With the PK4564-PRO, power the analyzer with the voltage that is being monitored using the compact LDCm. Achieve communications redundancy with the additional options of a USB Communications Cable and Bluetooth Adapter for your computer.

With the PK4564-PRO+, use the compact and weather-resistant carrying/operating case to safely and securely monitor power in almost any situation. Benefit from an extra year of the PowerSight Deluxe Warranty, which includes an extra calibration, plus warranty coverage and software/firmware updates (for a total of 2 years).



## Power Analysis

### 72 different measurement types

Measures & Logs: Voltage (V), Current (A), Power (KW), Apparent Power (KVA), True Power Factor (TPF), Displacement Power Factor (DPF), Unbalance, Frequency (Hz), Individual Harmonics, and THD. Positive/Negative/Net power logged separately.

### 6-10 hour battery life on a full charge

### Measurement Ranges

RMS Volts: 0 - 1000V (up to 15kV with optimal medium voltage probes)

RMS Amps: 1 - 150A (low range), 10 - 6000A (high range)

Frequency: 22-200 Hz, 360-440 Hz fundamental (DC)

Harmonics: 1-50th Harmonic on Unit & PC

### True Power Quality Analysis

Swell/Dip Capture of Voltages & Currents

Inrush Current

High-Speed Transients

### Common Applications

Long, Extended Studies

Cost & Efficiency Analysis

High Frequency Studies

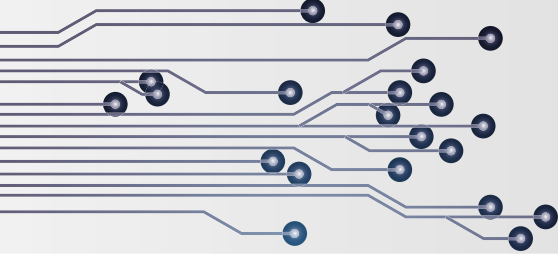
In-Depth Power Quality Analysis

Verifying ATS & Backup Power

Studies in 400Hz







# Specifications

**Size:** 3.89" (9.86cm) W x 7.72" (19.61cm) L x 1.58" (4.01cm) D at the bottom; 2.14" (5.44cm) D at the top

**Weight:** 1.1 lbs (0.5 kg)

**Operating Range:** 32°-122°F (0°-50° C), Relative Humidity to 70% (non-condensing)

**Power Requirement:** 12V DC @ 500 mA; wall-mounted power supply included (specify 120V or 240V). Internal Li-ion battery operates 8-10 hours after 7-hour (max) charge.

Displays battery capacity on the meter

**Basic Sampling Rate:** 8 microseconds  
2083 Samples per cycle at 60Hz

**Voltage Measurement Ranges:** 1 - 1000 Vrms  
Steady State (direct input), 1 - 1000 Vdc  
Accuracy:  $\pm 0.1\%$

**Current Measurement Range:** 1 - 6,000 A (for PK4564 series systems with eFX6000 probes)  
PS4550 Range: 2mA - 9MA depending on probes  
Display Range: 1 mA - 6 mA (using input ratios)  
Accuracy:  $\pm 0.1\%$  of reading plus accuracy of probes

**Fundamental Frequency Measurement:**  
Range: 22 - 200 Hz, 360 - 440 Hz, DC  
Accuracy:  $\pm 0.25\%$

**Harmonics Measurement:**  
Range: 22 - 300 Hz (25th Harmonic @ 50/60Hz on meter, 50th Harmonic via PC)  
Accuracy:  $\pm 0.25\%$

**Power Quality event Capture:**  
Swell (surge), Dip (sag), and Inrush Current:  
Trigger on 1/2 cycle RMS  
High-Speed Transients: Trigger absolute or relative, from 8 microseconds

**Wireless Communications:** Bluetooth standard (Wi-Fi optional)

**Display:** Backlit text, hi-res graphics on PC

**Power, Energy, Cost, Power Factor:**  
VA, VAR, True Power Factor (TPF), Displacement Power Factor (DPF), Phase Lag Angle, Energy kWh, Waveform Snapshot  
Display Range: 1 W - 60 MW (using input ratios)  
Accuracy:  $\pm 0.5\%$  plus accuracy of current probe

**Logging:** Minimum, Maximum, Average, and Present values of V, A, W, etc.

**Logging Period (resolution):** 1 sec - 99 min

**Logging Period (Length of Session):** essentially unlimited, with SD card

**Internal Data Retention:** 8 years

**Internal Memory Storage:** Full redundancy with SD card (essentially unlimited storage)

**Safety Ratings:** CAT IV for 600 V, CAT III for 1,000 V

## Other Features:

USB-COMM wired cable (PRO and PRO+)  
SD Memory Card included in all systems  
Redundant communications and storage  
Log up to 72 unique measurement types  
TestPlan Manager™: design project plans on PC  
DataSetup Wizard™: configure meter's data collection methods  
SureStart™: check connections prior to monitoring  
ReportWriter Wizard™: create professional reports  
Data exportable to Excel  
Derive power off testing voltage with LDCm (PRO and PRO+ )  
Direct Connect to Medium Voltage with 5kV or 15kV probes  
DC Current Measurement with DC600 or DC2000 probes

# Start-to-Finish Solution



## Develop Your Test Plan with TestPlan Manager™

Create a test plan and load it into your analyzers so they “know” the plan. Single click to retrieve, re-route, and re-name the data without error.

## Configure the Analyzer with DataSetup Wizard™

Allow wizard to set the PS4550 up based on your needs or override the selections for custom operating modes



## Connect the Analyzer with SureStart™ Expert System

A patented AI system that warns you of possible connections errors prior to monitoring, with the push of a button.

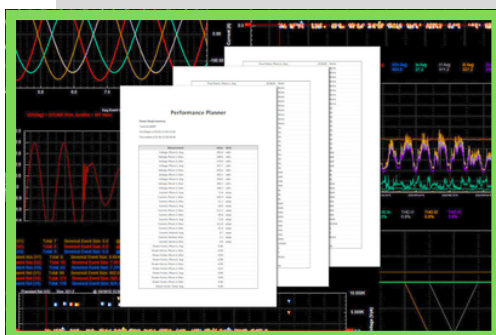
## Record & Collect Data with Memory and Comms Redundancy

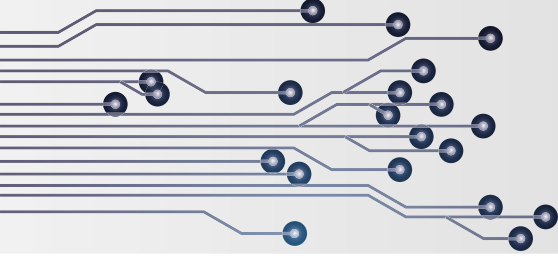
Failing is not an option when monitoring for extended periods. Redundant memory storage, communications, and control come standard in every PowerSight.



## Create the Report with ReportWriter Wizard™

Summarize data in a professional report with graphs and tables that turn raw data into meaningful visuals.

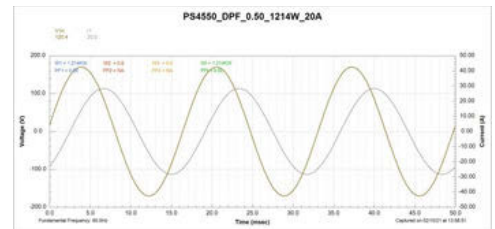
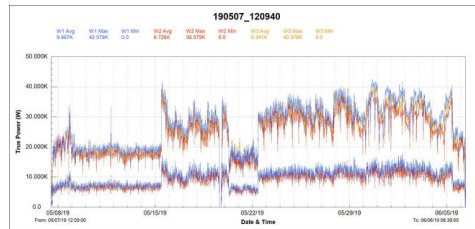
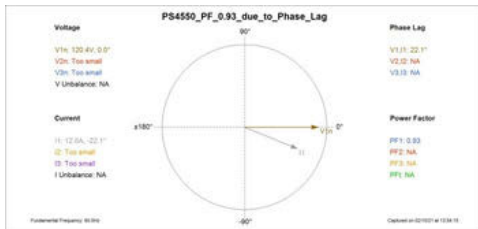
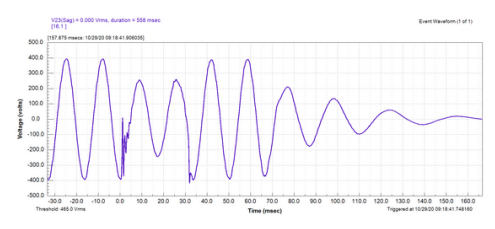
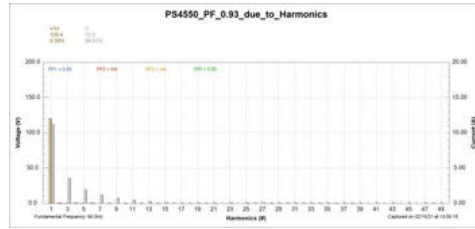
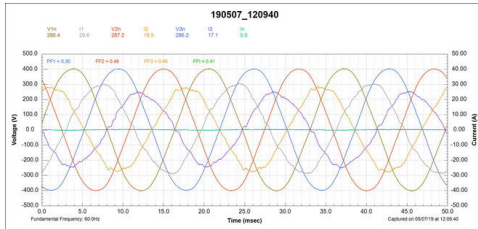




# PSM-A Software

## View Waveforms, Harmonics, Phasors, & More

Manipulate Your View - Add Custom Labels - Highlight Key Measurements - Invert Signals - Export & Share



## Remote Control of the Analyzer

View real-time data & graphics

Operate the analyzer as if it was in your hand

Stay out of the arc flash boundary (and out of bulky PPE)

Stable Bluetooth connection



## Create Convincing Reports with ReportWriter Wizard™

- **Summary Reports** summarize the results, with tables and graphs of all measurements of interest
- **Comparison Reports** compare two sets of data to present the difference in both hard numbers and percentages for excellent before/after analysis
- Advanced calculators determine projected and elapsed energy and cost, peak demand period, etc.



*Designed to ensure success at every step*