



## TECHNICAL DATA

# PLS 180R, 180G

## Line Laser Levels



### Accuracy

PLS 180R, and PLS 180G are accurate to  $\leq 1/8$  in at 30 ft. ( $\leq 3$  mm @ 10 m)



### Horizontal fan angle: 180°



### Vertical fan angle: 130°



### Pendulum lock

The PLS 180 is equipped with a pendulum lock, ensuring safe transport and the ability to lock the laser level in tilt mode.



### IP54

IP 54 rating to limit dust and water entry for years of operation on the job site.



### 1-meter drop tested



PLS laser levels are backed by a three-year best-in-class warranty, ensuring you don't lose any time on the job. If you experience issues with your PLS tools during the warranty period, except for obvious misuse or damage, your local dealer can provide you a same day replacement tool.

### Level. Layout. Build.™

The new PLS 180 red and green laser levels offer the durability and precision you expect from PLS, a Fluke Company. The fast settling, self-leveling pendulum gives you accurate reference lines almost instantly. Additionally, these products feature a pendulum lock to secure the laser during transport or if dropped.

## PRODUCT OVERVIEW

### All laser level models

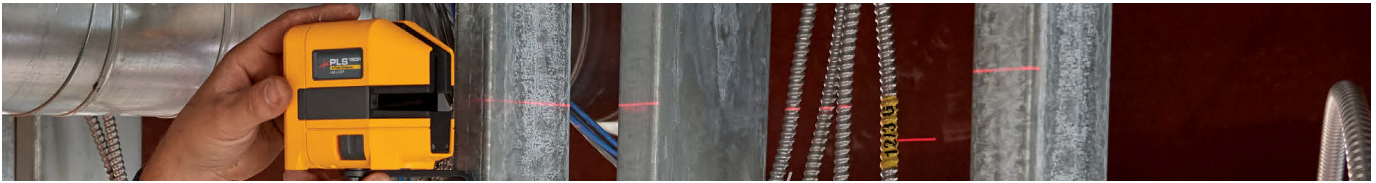
- Accuracy:  $\leq 1/8$  in at 30 ft. ( $\leq 3$  mm @ 10 m)
- Durable pendulum lock

### PLS 180R, PLS 180G

- This professional self-leveling cross line laser level in both red and green is equipped for multiple applications including wall construction, acoustic ceiling installation, tile installation, residential and commercial construction.
- Kit includes magnetic L-bracket for fast, easy overhang and center-line measurements and the UB9 Universal Wall/Ceiling Bracket for fine vertical adjustment and ceiling installation.
- System includes the SLD laser line detector for use in bright lighting, long distances, or outdoors.

### PLS, The Professional Standard— Built by contractors for contractors

PLS lasers provide bright, crisp reference points and lines for quick and accurate layout. As the Professional Standard of laser levels, PLS tools were developed out of necessity by professional contractors with over 50 years of experience in commercial and residential interior and exterior layout. Now, as a Fluke Company, PLS incorporated Fluke's high standards for accuracy, ruggedness, and dependability.



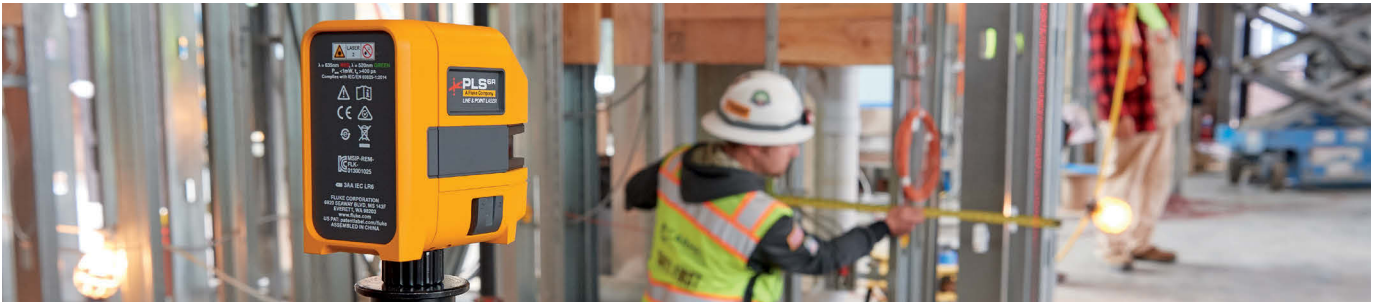
## Specifications

<b>PLS 180R, 180G</b>	
<b>Battery</b>	3 x AA Alkaline IEC LR6
<b>Battery Life, Continuous Use</b>	
Red	≥ 8 hours (both lasers)
Green	≥ 3 hours (both lasers)
<b>Line Fan Angle</b>	
Horizontal	≥ 180°
Vertical	≥ 130°
<b>Working Range</b>	
Line Laser	
Without SLD	≤15 m (50 ft.)
With SLD	6 m to 60 m (20 ft. to 200 ft.)
<b>Accuracy</b>	≤3 mm @ 10 m (≤1/8 in at 30 ft.)
<b>Laser Leveling</b>	
System	Automatic, Pendulum
Range	4°
<b>Line Laser Width</b>	≤2 mm at 5 m
<b>Temperature</b>	
Operating	-10 °C to 50 °C (14 °F to 122 °F)
Storage	
With Batteries	-18 °C to 50 °C (-0.4 °F to 122 °F)
Without Batteries	-20 °C to 70 °C (-13 °F to 158 °F)
<b>Relative Humidity</b>	0 % to 90 % (0 °C to 35 °C) 0 % to 75 % (35 °C to 40 °C) 0 % to 45 % (40 °C to 50 °C)
<b>Size (H x W x L)</b>	116 mm x 64 mm x 104 mm (4.6 in x 2.5 in x 4.1 in)
<b>Weight</b>	~ 0.6 kg (1.3 lb.)
<b>Safety</b>	IEC 61010-1: Pollution Degree 2
<b>Laser</b>	IEC 60825-1:2014 Class 2
Light Source	Semiconductor laser diode
Max Output Power	< 1 mW
<b>Wavelength</b>	
Red	635 nm ± 5 nm
Green	525 nm ± 5 nm
<b>Electromagnetic Compatibility (EMC)</b>	
<b>International</b>	IEC 61326-1: Basic Electromagnetic Environment CISPR 11: Group 1, Class B Group 1: Equipment has intentionally generated and/or uses conductively-coupled radio frequency energy that is necessary for the internal function of the equipment itself. Class B: Equipment is suitable for use in domestic establishments and in establishments directly connected to a low voltage power supply network which supplies buildings used for domestic purposes. Emissions that exceed the levels required by CISPR 11 can occur when the equipment is connected to a test object
<b>Korea (KCC)</b>	Class B Equipment (Broadcast communications equipment for home)
<b>USA (FCC)</b>	47 CFR 15 subpart B. This product is considered an exempt device per clause 15.103.



## Ordering information

Laser levels			
Part number	SKU	Item description	What's in the box?
5017279	PLS 180R Z	Cross Line Red Laser Bare Tool	PLS 180R laser level, PLS canvas pouch, PLS BP5 alkaline battery pack, Safety Sheet and Quick Reference Guide
5009450	PLS 180R KIT	Cross Line Red Laser Kit	PLS 180R laser level, PLS canvas pouch, PLS BP5 alkaline battery pack, PLS UB9 Universal Ceiling and Wall Bracket, PLS FS Floor Stand, PLS MLB Magnetic L-Bracket, PLS RRT4 Red Reflective Target, Safety Sheet and Quick Reference Guide
5019428	PLS 180R SYS	Cross Line Red Laser System	PLS 180R laser level, PLS canvas pouch, PLS BP5 alkaline battery pack, PLS SLD-RED Red Laser Line Detector, PLS 60520 SLD Clamp, PLS UB9 Universal Ceiling and Wall Bracket, PLS FS Floor Stand, PLS MLB Magnetic L-Bracket, PLS RRT4 Red Reflective Target, Safety Sheet and Quick Reference Guide
5017287	PLS 180G Z	Cross Line Green Laser Bare Tool	PLS 180G laser level, PLS canvas pouch, PLS BP5 alkaline battery pack, Safety Sheet and Quick Reference Guide
5009509	PLS 180G KIT	Cross Line Green Laser Kit	PLS 180G laser level, PLS canvas pouch, PLS BP5 alkaline battery pack, PLS UB9 Universal Ceiling and Wall Bracket, PLS FS Floor Stand, PLS MLB Magnetic L-Bracket, PLS GRT4 Green Reflective Target, Safety Sheet and Quick Reference Guide
5019437	PLS 180G SYS	Cross Line Green Laser System	PLS 180G laser level, PLS canvas pouch, PLS BP5 alkaline battery pack, PLS SLD-GREEN Green Laser Line Detector, PLS 60520 SLD Clamp, PLS UB9 Universal Ceiling and Wall Bracket, PLS FS Floor Stand, PLS MLB Magnetic L-Bracket, PLS GRT4 Green Reflective Target, Safety Sheet and Quick Reference Guide



## Ordering information

Accessories			
Part number	SKU	Item description	What's in the box?
5031934	PLS MLB	Magnetic L-Bracket, PLS 3, 5, 6, 180	PLS MLB Magnetic L-Bracket
4966636	PLS UB9	UB9 Universal Ceiling/Wall Bracket	PLS UB9, Quick Reference Guide
4978515	PLS SLD RED	SLD Red Detector W/ Bracket	PLSPLS 60520 SLD clamp, Battery, Quick Reference Guide
4978526	PLS SLD GREEN	SLD Green Detector W/ Bracket	PLSPLS 60520 SLD clamp, Battery, Quick Reference Guide
5022629	PLS RRT4	Red Magnetic Reflective Target	RRT4 red reflective target
5022634	PLS GRT4	Green Magnetic Reflective Target	GRT4 green reflective target
4985124	PLS C18	Laser Level Tool Box	PLS C18 Laser Level Tool Box
4792193	PLS 60573	PLS Nylon Laser Pouch	PLS Nylon Laser Pouch