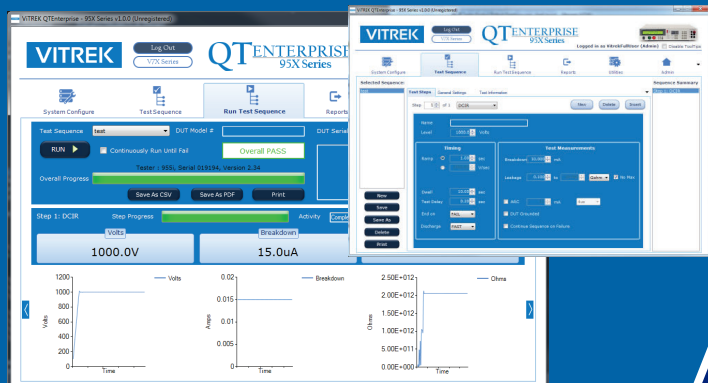


# For Automated Test Sequencing *QT Enterprise Software*

**Vitrek's Most Powerful & Flexible Electrical Safety Test Automation Software Available, Yet Surprisingly Easy-To-Use and Affordable.**



**Maximum Flexibility** - QT Enterprise software is available for use with Vitrek V7X and 95X Series Hipot testers in addition to the 98X Series of IR Tester/Teraohmmeters to streamline your test sequences and provide the features you want...and need...for your electrical safety tests.

Procedures stored via QT Enterprise can be recalled via a barcoded scan to enable fast and accurate setup. In situations where multiple test points are involved, the software can interface with Vitrek's 964i High Voltage Switching Systems, operating in conjunction with V7X & 95X Hipot Testers to further automate the process. For complex setups, QT Enterprise can display detailed instructions and images to the operator to ensure proper connections prior to testing.

**Maximize Productivity** - Increase productivity and eliminate human error by using a barcode scanner to read the DUT model number and instantly bring up the correct, ready-to-run test sequence. Multiple DUT model numbers can be linked to a given test sequence. When configured to require a serial number entry, the barcode scanner can load the data and launch the test all from the tug of a trigger. Vitrek's QT Enterprise software is the most powerful and easy-to-use test automation software in the industry. Download a copy today and watch your productivity shift into hyper speed.

**Maximum Results** - QT Enterprise records the results of every test. By using filtering functions provided, individual tests can be recalled for auditing purposes or detailed analysis on testing or product performance. Results of recalled tests can be saved as PDF or CSV as if the test was just performed.

QT Enterprise provides a clean and intuitive means for creating and modifying a virtually unlimited number of electrical safety testing procedures. Each test sequence can have as many as 999 steps to perform a comprehensive range of electrical safety tests including AC and/or DC voltage withstand, insulation resistance, ground bond testing and others. Barcode reading of device-under-test (DUT) model and serial number assures proper application of required tests.

QT Enterprise only communicates with the tester (and optionally, the switch units) when required to do so. This means that work with QT Enterprise on any computer can be performed to define users, system configurations and/or test sequences without requiring specific interface hardware or the units themselves.

## Quality and Reliability

Vitrek, founded in 1990, is the premier source of precision power testing and measuring equipment for industrial and consumer product development and manufacturing. Vitrek's sophisticated technology provides companies the edge in design verification and product manufacturability.

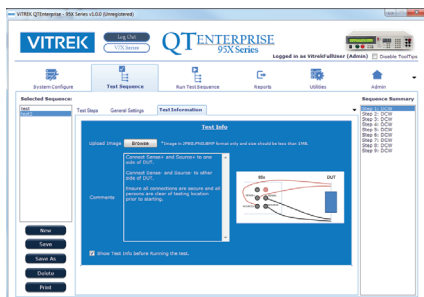
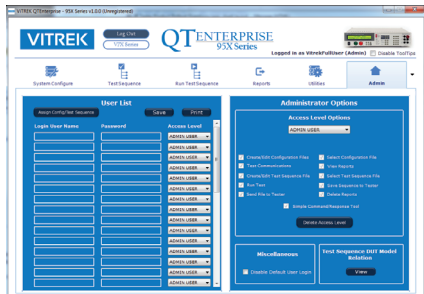
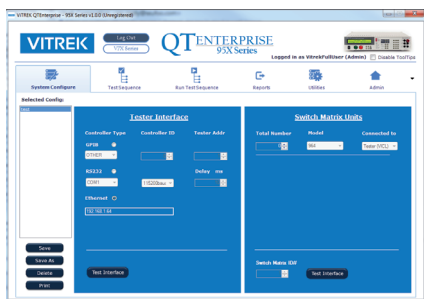
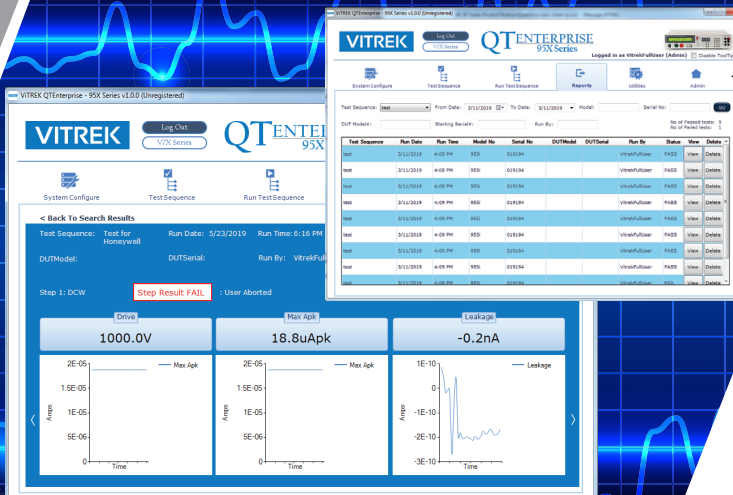
## INDUSTRIES SERVED

- Automated Production Testing • Ballast Testing • Consumer Products • Engineering Labs
- Instrument Maintenance & Repair • Peak Power & Consumption Measurements
- Light Output Verification • Product Compliance Testing • Test Labs

**25**  
Years Industry  
EXPERTISE

# QT Enterprise Software

## Test Like You MEAN IT



- > Configurations, test sequences, test results, users and other system settings are stored on a local PC or in a central SQL database accessible through a network
- > Test data is easily accessible and user may sort and filter a list of results based on your specific criteria
- > Integrates with barcode scanner to read DUT model and bring up the correct, ready-to-run test sequence
- > Multimedia Setup Instructions can be incorporated into test sequences providing operator with visual prompts for easy and accurate DUT hookup
- > Easy-to-use graphical setup screens allow for quick and easy test setup
- > Quick and easy setup or modification of test sequences via intuitive function buttons within the software
- > Auto Save Test Results to a predetermined file location for ease of access
- > Automated Multi-Point Switching - software capable of integrating the Vitrek 964i High Voltage Scanning Matrix into any desired test to automate test point selection on multipoint devices or "batch test" multiple DUTs for even higher throughput
- > Advanced Admin Tab allows for quick and easy user setup and administration including editing, deleting and assigning access levels for test procedures

### Condensed Specifications

(Contact Vitrek for complete specifications)

### OPERATING SYSTEMS

- Windows XP SP3
- Windows Vista SP1 or later
- Windows 7
- Windows 8 (Desktop Application)
- Windows 10

### SUPPORTED ARCHITECTURES:

- x86 (32 bit)
- x64 (64 bit)

### HARDWARE REQUIREMENTS:

Recommended Minimum: 2 GHz Processor speed or higher with 2 GB Ram (Hardware requirements may be greater due to OS requirements).

### TESTER:

A Vitrek 951, 952, 953, 954, 955, 956, 957 or 959 instrument running main firmware v2.02 or later.

A Vitrek V7X instrument running main firmware version 1.10 or later recommended.

A Vitrek 98X IR Tester/Terahmmeter

### SWITCH UNITS (OPTIONAL):

Any of Vitrek model 948, 964, V75 or V76 instruments. Different models cannot be inter-mixed in the same system.

PART #	DESCRIPTION
QTE-7	QT Enterprise Software for use with Vitrek V7X Hipot Testers
QTE-9	QT Enterprise Software for use with Vitrek 95X Series Hipot Testers



Test Equipment Depot - 800.517.8431 - 5 Commonwealth Ave, MA 01801

TestEquipmentDepot.com