



**Mastercool**<sup>®</sup> Inc.  
"World Class Quality"

**Test Equipment Depot**  
1-800-517-8431

99 Washington Street  
Melrose, MA 02176  
Phone 781-665-1400  
Toll Free 1-800-517-8431

Visit us at [www.TestEquipmentDepot.com](http://www.TestEquipmentDepot.com)

## R1234yf/R134a MANIFOLD GAUGE SETS

### R1234yf/R134a ALUMINUM MANIFOLD GAUGE SET



- Professional extruded aluminum block
- 2 1/2" silicone dampened, recalibrateable gauges
- Free-floating piston type valves reduce o-ring wear
- Extra access port for vacuum line
- Extra large sight glass for visual refrigerant check
- Large easy-to-grip knobs
- R1234yf high and low side couplers with extended disconnect protection sleeve meets SAE J639 & J2888
- R134a high and low side manual couplers meet SAE, UL and EPA requirements for containment of refrigerant
- 1/2" acme-m x 1/2" acme-f LH thread adapter
- (2) 12 mm-m x 14 mm-f R1234yf adapters
- Set of 3 - R134a standard hoses

- 89636-AYF** R1234yf/R134a aluminum manifold gauge set, 2 1/2" gauges, 3-36" R134a standard hoses, R134a manual couplers (82834, 82934), R1234yf couplers (83834, 83934), 1/2" acme-m x 1/2" acme-f LH thread adapter (83633), (2) 12 mm-m x 14 mm-f R1234yf adapters (83735)
- 89661-AYF** R1234yf/R134a aluminum manifold gauge set, 2 1/2" gauges, 3-60" R134a standard hoses, R134a manual couplers (82834, 82934), R1234yf couplers (83834, 83934), 1/2" acme-m x 1/2" acme-f LH thread adapter (83633), (2) 12 mm-m x 14 mm-f R1234yf adapters (83735)
- 89772-AYF** R1234yf/R134a aluminum manifold gauge set, 2 1/2" gauges, 3-72" R134a standard hoses, R134a manual couplers (82834, 82934), R1234yf couplers (83834, 83934), 1/2" acme-m x 1/2" acme-f LH thread adapter (83633), (2) 12 mm-m x 14 mm-f R1234yf adapters (83735)

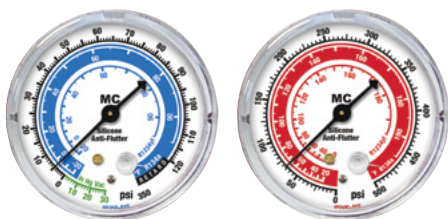
### R1234yf/R134a BRASS MANIFOLD GAUGE SET



- 2 1/2" silicone dampened, recalibrateable gauges
- Extra access port for vacuum line
- R1234yf high and low side quick couplers
- R134a high and low side economy couplers
- 1/2" acme-m x 1/2" acme-f LH thread adapter
- (2) 12 mm-m x 14 mm-f R1234yf adapters
- Set of 3 - R134a standard hoses

- 66636-AYF** R1234yf/R134a brass manifold gauge set, 2 1/2" gauges, 3-36" R134a standard hoses, R134a economy couplers (66234, 66334), R1234yf quick couplers (67434, 67534), 1/2" acme-m x 1/2" acme-f LH thread adapter (83633), (2) 12 mm-m x 14 mm-f R1234yf adapters (83735)
- 66661-AYF** R1234yf/R134a brass manifold gauge set, 2 1/2" gauges, 3-60" R134a standard hoses, R134a economy couplers (66234, 66334), R1234yf quick couplers (67434, 67534), 1/2" acme-m x 1/2" acme-f LH thread adapter (83633), (2) 12 mm-m x 14 mm-f R1234yf adapters (83735)
- 66672-AYF** R1234yf/R134a brass manifold gauge set, 2 1/2" gauges, 3-72" R134a standard hoses, R134a economy couplers (66234, 66334), R1234yf quick couplers (67434, 67534), 1/2" acme-m x 1/2" acme-f LH thread adapter (83633), (2) 12 mm-m x 14 mm-f R1234yf adapters (83735)

### R1234yf/R134a REPLACEMENT GAUGES



	High pressure p/n	Low pressure p/n	Gauge Diameter	Units	Refrigerant Scales
	85500-AYF	85350-AYF	2 1/2"	PSI/F	R1234yf R134a