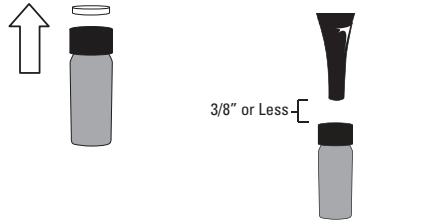


Refrigerant Leak Detector

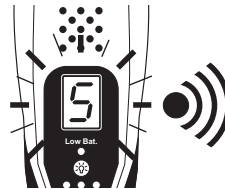
Leak Test Vial

The Leak detector comes with a Leak Test Vial that allows the user to make sure the detector is performing properly. To test: Turn the detector on and allow the unit to warm-up.

1. Remove Seal Cap
2. Place Sensor tip close to open vial.



3. The beep rate should increase and the Digital Leak Size Indicator should display a number from 4 - 6 indicating that the sensor and electronics are working properly



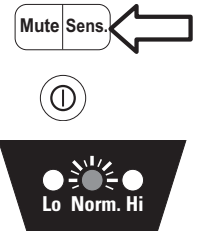
4. Replace Seal Cap

NOTE: Always remember to replace plastic seal cap after leak test is completed. Replace Test Vial when the blue color is no longer visible.



Sensitivity Level

1. Press Sens. button to Change / Scroll Sensitivity Levels. (Indicated By LED)



Work light

1. Press button to turn work light.



Low Battery Indicator

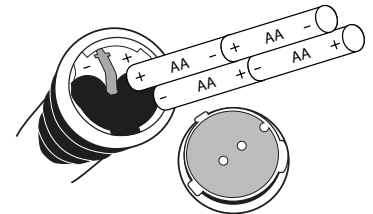
Replace batteries when flashing



Battery replacement:

1. Remove battery cover on end of instrument. (Fig1)
2. Replace 4 (AA) batteries with correct polarity.

(Fig1)



Test Equipment Depot
1-800-517-8431
Visit us at www.TestEquipmentDepot.com

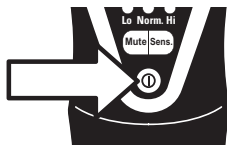
99 Washington Street
Melrose, MA 02176
Phone 781-665-1400
Toll Free 1-800-517-8431

INTRODUCTION

The RLD15B features a solid electrolyte semiconductor sensor that is designed to detect the more current and difficult HFC refrigerants such as R134a, R1234yf, R410A, R404A, R407C, in addition to all HCFC (R22) and CFC (R12) refrigerants including SNAP approved hydrocarbon blends.

Getting Started

1. **TURN ON:**
Press Power Button



2. **WARM UP:**
Allow 20 sec. to warm up (Indicator will blink and alarm will beep)



3. **READY:**
When the flashing "8" stops and the green sensitivity indicator LED turns on



4. The leak detector response to changes in refrigerant concentration. When detection occurs, move the probe away from the source and back again to confirm the leak source. The detector alarm will reset if the probe is held fixed at the source.

FEATURES

Leak Size Indicator



The digital leak size indicator remains off until a leak is detected. A number from 1 - 9 will be displayed for all HFC and HCFC refrigerants, regardless of the sensitivity settings.

The number will increase or decrease depending on the amount of refrigerant sensed. The maximum value will be displayed once the leak source has been located.

Approximate Size Indications

Maximum # Displayed	Leak Size (oz/yr)
1-3	< 0.1
4-6	0.1 - 0.5
7-9	> 0.5

Audio Mute Function

1. Press Mute button to Mute speaker.



Limited Warranty

The **RLD15B** is warranted to be free from defects in materials and workmanship for a period of two years from the date of purchase. If within the warranty period your instrument should become inoperative from such defects, the unit will be repaired or replaced at UEI's option. This warranty covers normal use and does not cover damage which occurs in shipment or failure which results from alteration, tampering, accident, misuse, abuse, neglect or improper maintenance. Batteries and consequential damage resulting from failed batteries are not covered by warranty.

Any implied warranties, including but not limited to implied warranties of merchantability and fitness for a particular purpose, are limited to the express warranty. UEI shall not be liable for loss of use of the instrument or other incidental or consequential damages, expenses, or economic loss, or for any claim or claims for such damage, expenses or economic loss.

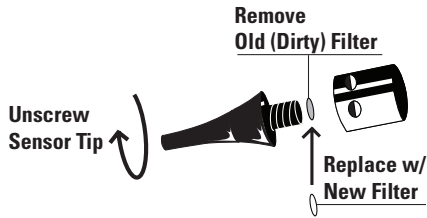
A purchase receipt or other proof of original purchase date will be required before warranty repairs will be rendered. Instruments out of warranty will be repaired (when repairable) for a service charge.

For more information on warranty and service:

This warranty gives you specific legal rights. You may also have other rights which vary from state to state.

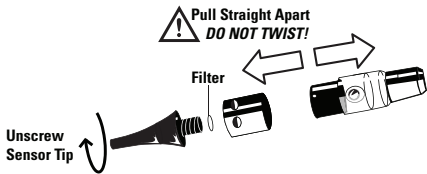
Filter Replacement

1. Replace Filter: Unscrew sensor tip as shown to replace filter. Replace filter whenever it becomes visibly dirty or every 2 to 3 months depending on use.

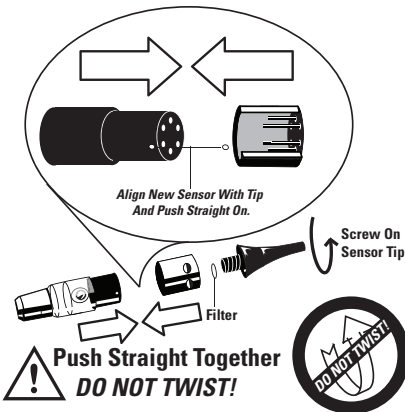


Sensor Replacement

- 1) Remove sensor by unscrewing sensor tip and pulling out the socket.



- 2) Install the new sensor by aligning the mark on the sensor cover with that on the probe and pressing together.



WARNING

DO NOT TWIST OR FORCE THE SENSOR INTO THE SOCKET.
Misalignment can damage the sensor pins.

SPECIFICATIONS

Sensitivity	.05 oz/yr R134a .025 oz/yr R22, R1234yf
Sensor Life	> 300 Hours
Response Time	≤ 1sec
Power Supply	4 (AA) Alkaline
Battery Life	4 - 6 Hrs. Continuous
Warm-Up Time	<20 Seconds
Probe Length	17 inches
Numerical Display	7 Segment Digital (1-9)
Display Refresh Rate	3/sec.
Operating Temperature	-24 to 125°F (-31 to 52°C)
Operating Humidity	<95% non. condensing
Operating Altitude	<10,000 ft.
Storage Temperature	-4 to 122°F (20 to 50°C)
Pollution Degree	4
Weight, lbs	1.5 Lbs
Certifications	SAE J2791, SAE J2913 EN14624-2012 ASHRAE 173-2012
Warranty	2-Year limited warranty

Cross Sensitivity to Automotive Chemicals

Some Automotive solvents and chemicals have similar hydrocarbon properties as R134a and may elicit a positive response (< 30 seconds) from the RLD15B. Before leak detecting, clean up any chemicals in the list below that elicit a response.

Rain-X® Windshield wash fluid
Ford® silicone lubricant
Ford® Gasket adhesive (when wet)
Ford® rust inhibitor (when wet)
Loctite® Natural Blue® Degreaser (undiluted)
Ford® brake parts cleaner (when wet)
Ford® silicone rubber (when uncured)
Motorcraft® antifreeze heated to 160°F
Gunk® liquid wrench (when wet)
Ford® spot remover (when wet)
Ford® pumice lotion (with mineral solvent)
Ford® motorcraft brake fluid
Ford® carburetor cleaner (when wet)

Third party trademarks referenced are the property of their respective owners.